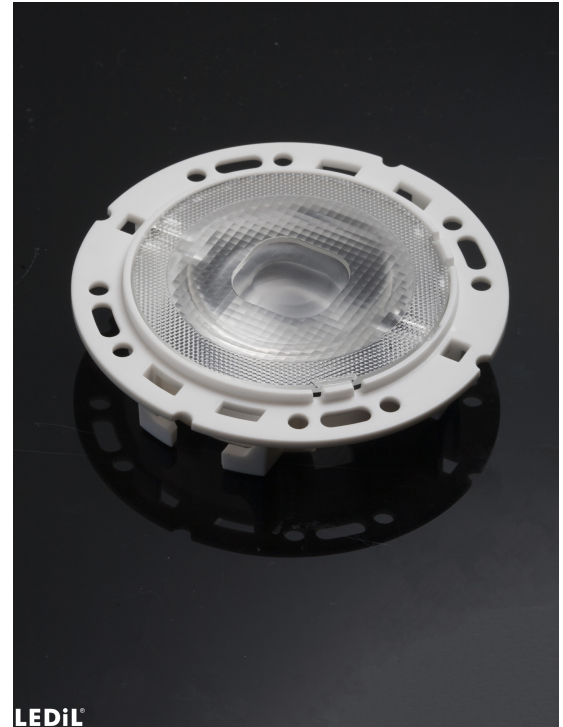


RONDA-REC-60

~60° + 60° rectangular beam with holder A compatible with 3rd party connectors from TE, Bender+Wirth and IDEAL

SPECIFICATION:

Dimensions	Ø 69.9 mm
Height	14.6 mm
Fastening	socket
ROHS compliant	yes ⓘ



MATERIALS:

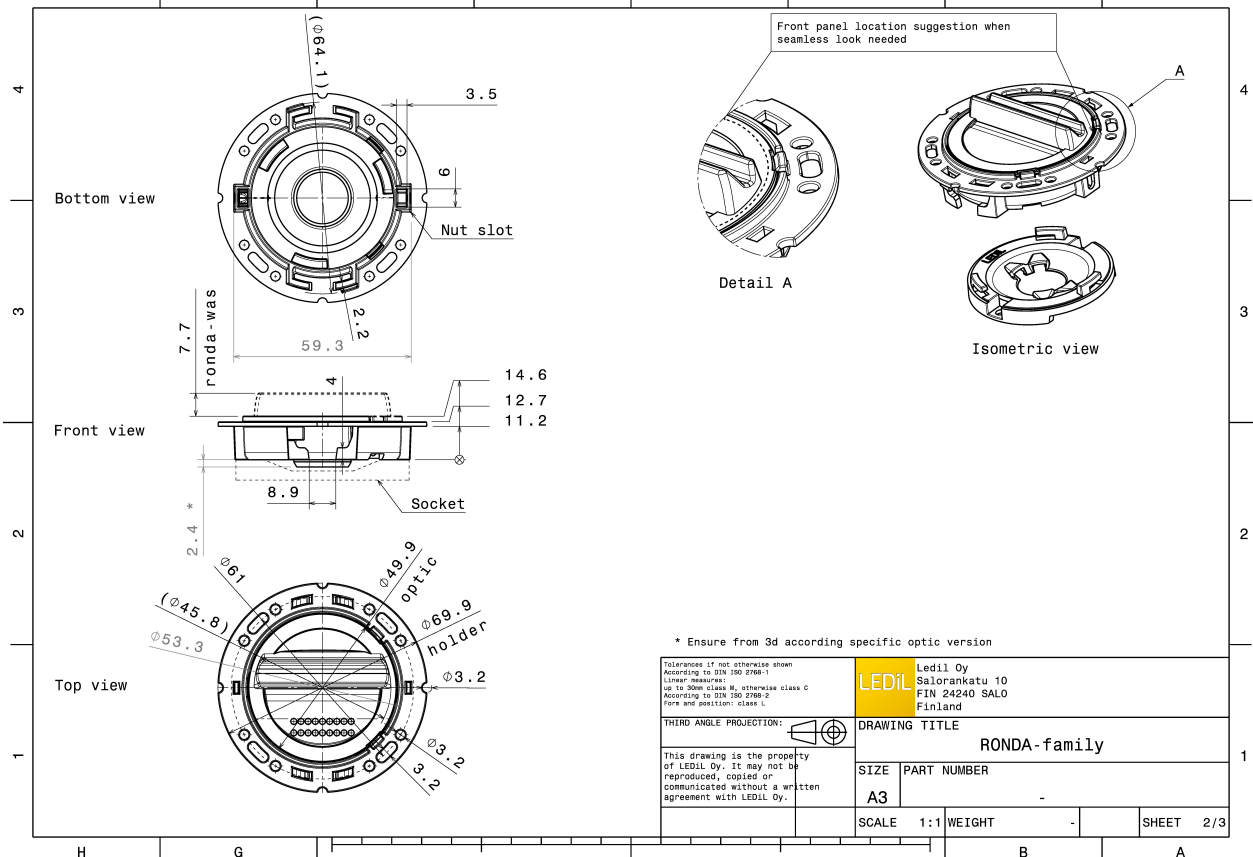
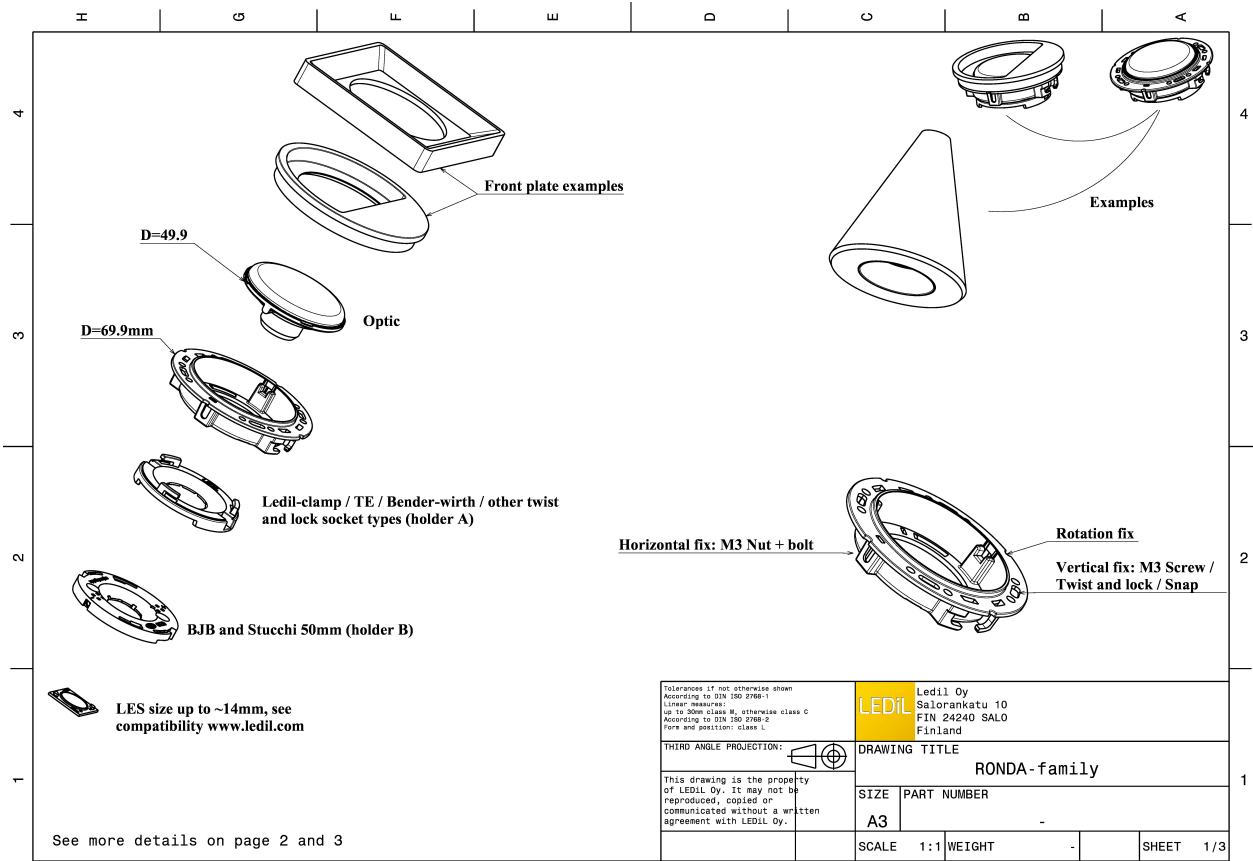
Component	Type	Material	Colour	Finish
F15556_RONDA-REC-60	Single lens	PMMA	clear	
F15155_RONDA-HLD-A	Holder	PC	white	

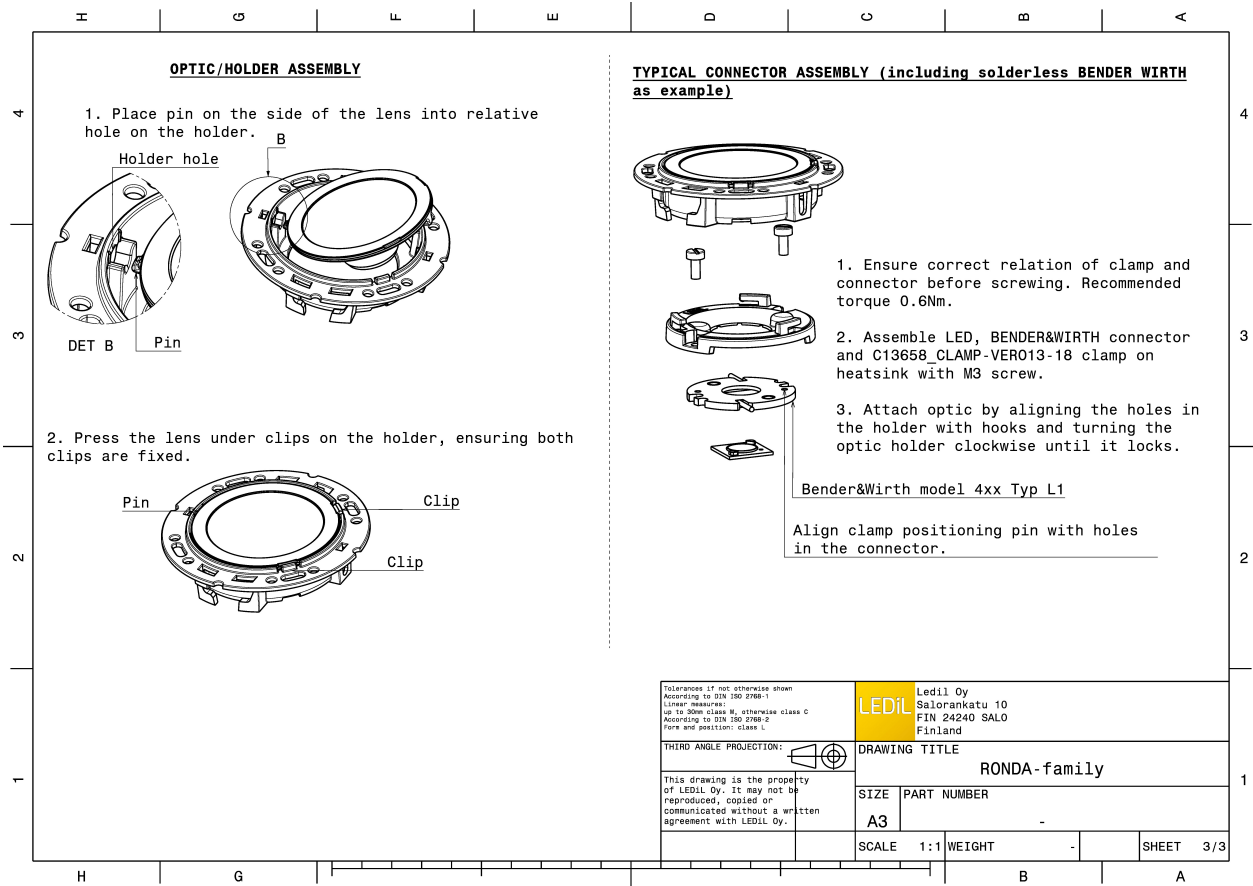
ORDERING INFORMATION:

Quantities for one set:

Single lens	1
Holder	1


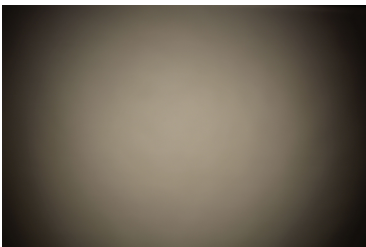
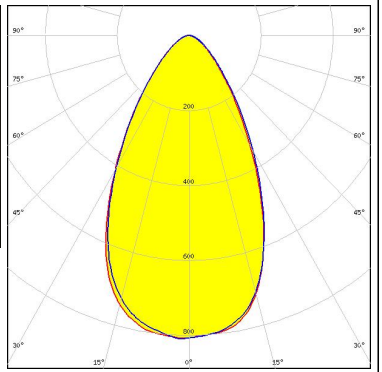
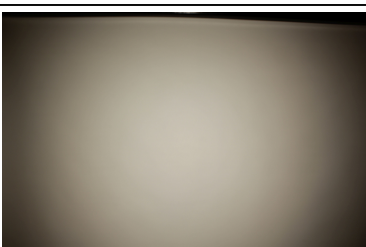
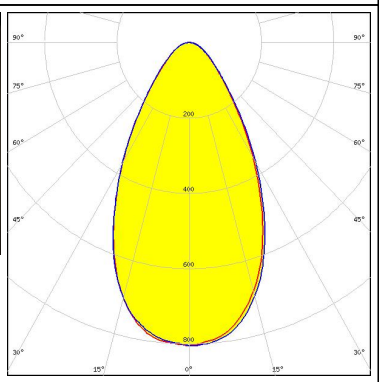

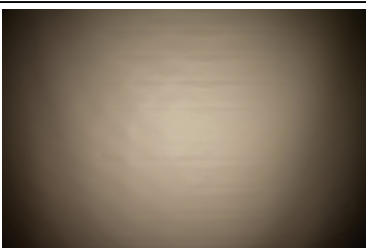
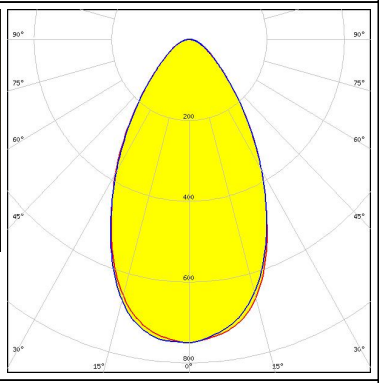

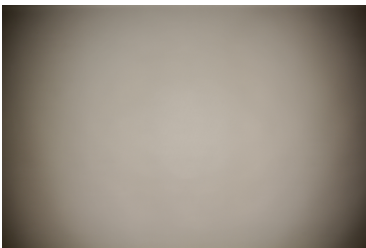
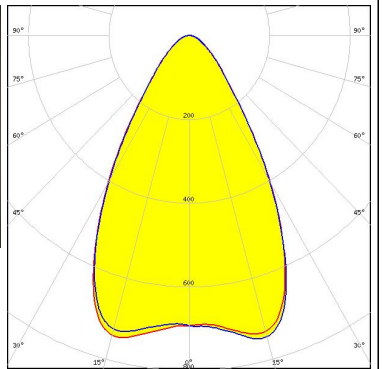
Component		Qty in box	MOQ	MPQ	Box weight (kg)
F15556_RONDA-REC-60	Single lens	420	120	30	6.7
» Box size: 480 x 280 x 300 mm					
F15155_RONDA-HLD-A	Holder	420	120	30	4.4
» Box size: 480 x 280 x 300 mm					





See also our general installation guide: www.ledil.com/installation_guide

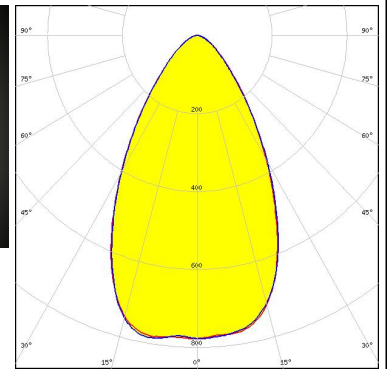
OPTICAL RESULTS (MEASURED):

<p> LED Vero SE 13 FWHM / FWTM 58.0° / 103.0° Efficiency 90 % Peak intensity 0.8 cd/m LEDs/each optic 1 Light colour White Required components: C16402_CLAMP-VEROSE-13-18</p>		
<p>CITIZEN LED CLL03x/CLU03x FWHM / FWTM 57.0° / 104.0° Efficiency 89 % Peak intensity 0.8 cd/m LEDs/each optic 1 Light colour White Required components: C16791_CLAMP-Z45-A TE Connectivity: 2325807-3</p>		
<p> LED CMA1840 FWHM / FWTM 60.0° / 109.0° Efficiency 90 % Peak intensity 0.8 cd/m LEDs/each optic 1 Light colour White Required components: C14123_CLAMP-CXA15-18</p>		
<p> LED CXA/B 15xx FWHM / FWTM 63.0° / 104.0° Efficiency 91 % Peak intensity 0.8 cd/m LEDs/each optic 1 Light colour White Required components: C14123_CLAMP-CXA15-18</p>		

OPTICAL RESULTS (MEASURED):

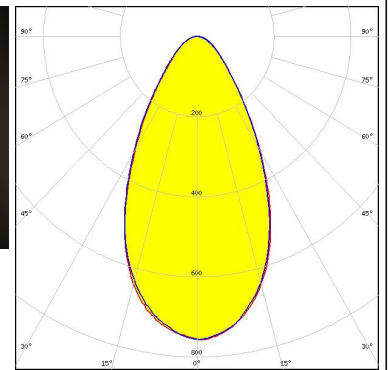


LED CXA/B 1816 & CXA/B 1820 & CXA 1850
FWHM / FWTM 60.0° / 104.0°
Efficiency 91 %
Peak intensity 0.8 cd/lm
LEDs/each optic 1
Light colour White
Required components:
C14123_CLAMP-CXA15-18

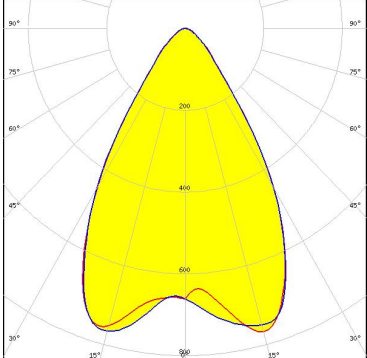
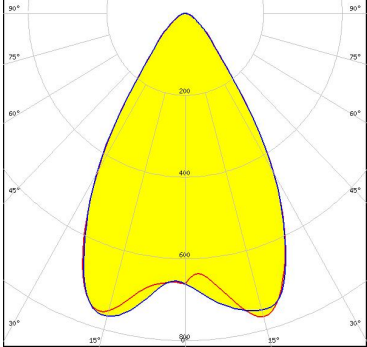
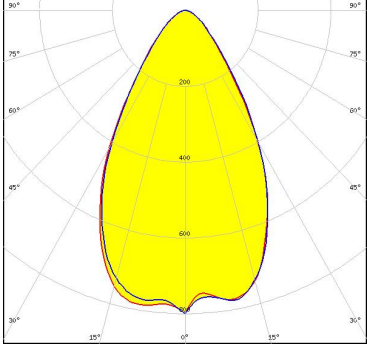
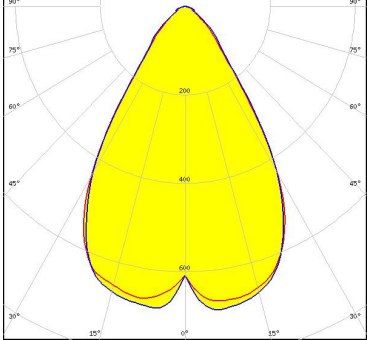


OSRAM

LED PrevaLED Core G7 L15 H1
FWHM / FWTM 55.0° / 104.0°
Efficiency 81 %
Peak intensity 0.8 cd/lm
LEDs/each optic 1
Light colour White
Required components:
C16685_CLAMP-PRV-A



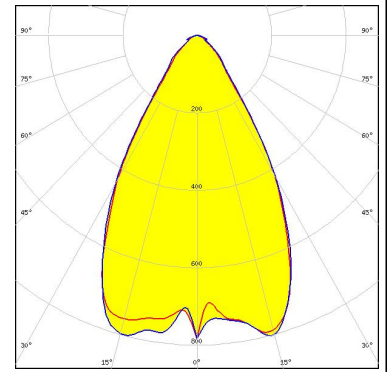
OPTICAL RESULTS (SIMULATED):

<p>bridgelux.</p> <p>LED H9 FWHM / FWTM 63.0° Efficiency 91 % LEDs/each optic 1 Light colour White Required components: C13658_CLAMP-VERO13-18 Bender Wirth: 441 Typ L1</p>	
<p>bridgelux.</p> <p>LED H9 FWHM / FWTM 63.0° Efficiency 91 % LEDs/each optic 1 Light colour White Required components: C14123_CLAMP-CXA15-18</p>	
<p>bridgelux.</p> <p>LED V13 Gen7 FWHM / FWTM 60.0° Efficiency 87 % Peak intensity 0.8 cd/lm LEDs/each optic 1 Light colour White Required components: C13658_CLAMP-VERO13-18 Bender Wirth: 477 Typ L1</p>	
<p>CITIZEN</p> <p>LED CLU700/701/702/703 FWHM / FWTM 65.0° Efficiency 90 % LEDs/each optic 1 Light colour White Required components: C13658_CLAMP-VERO13-18 Bender Wirth: 434 Typ L1</p>	

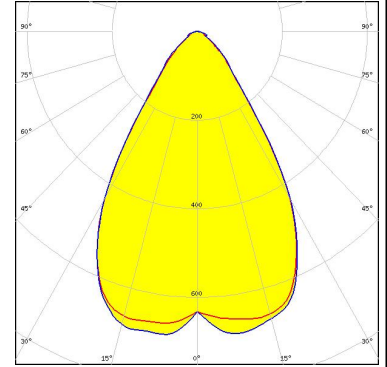
OPTICAL RESULTS (SIMULATED):

CITIZEN

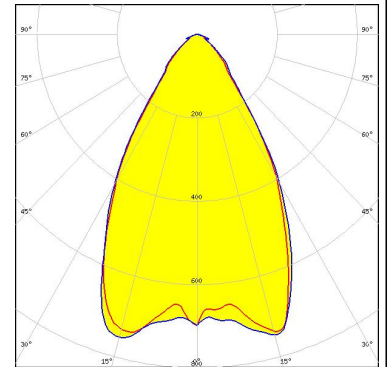
LED CLU710/711
 FWHM / FWTM 61.0°
 Efficiency 90 %
 LEDs/each optic 1
 Light colour White
 Required components:
 C13658_CLAMP-VERO13-18
 Bender Wirth: 470 Typ L1



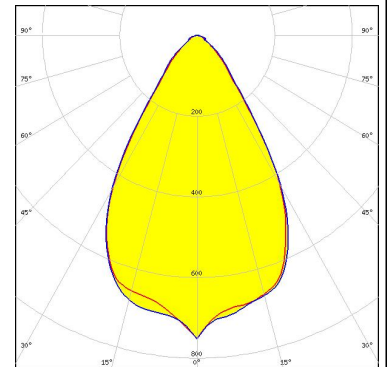
LED CXA/B 13xx
 FWHM / FWTM 65.0°
 Efficiency 90 %
 LEDs/each optic 1
 Light colour White
 Required components:
 C13658_CLAMP-VERO13-18
 Bender Wirth: 448 Typ L1



LED CXA/B 15xx
 FWHM / FWTM 62.0°
 Efficiency 89 %
 LEDs/each optic 1
 Light colour White
 Required components:
 C13658_CLAMP-VERO13-18
 Bender Wirth: 441 Typ L1



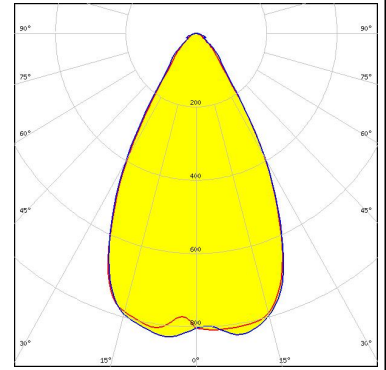
LED LUXEON CoB 1202s
 FWHM / FWTM 61.0°
 Efficiency 90 %
 LEDs/each optic 1
 Light colour White
 Required components:
 C13658_CLAMP-VERO13-18
 Bender Wirth: 452 Typ L1



OPTICAL RESULTS (SIMULATED):



LED NSCxL036A
FWHM / FWTM 58.0° / 88.0 + 94.0°
Efficiency 89 %
Peak intensity 0.8 cd/lm
LEDs/each optic 1
Light colour White
Required components:
TE Connectivity: 2213382-2 + OPTIC CLIP Z50 TYPE1 2213194-1



LED Mini Zenigata (GW6BM)
FWHM / FWTM 60.0°
Efficiency %
LEDs/each optic 1
Light colour White
Required components:
C13658_CLAMP-VERO13-18
Bender Wirth: 452 Typ L1

