

FLORENCE-1R-GC-Z60

~70° wide beam

SPECIFICATION:

Dimensions	19.0 x 282.6 mm
Height	7.7 mm
Fastening	screw
ROHS compliant	yes ⓘ

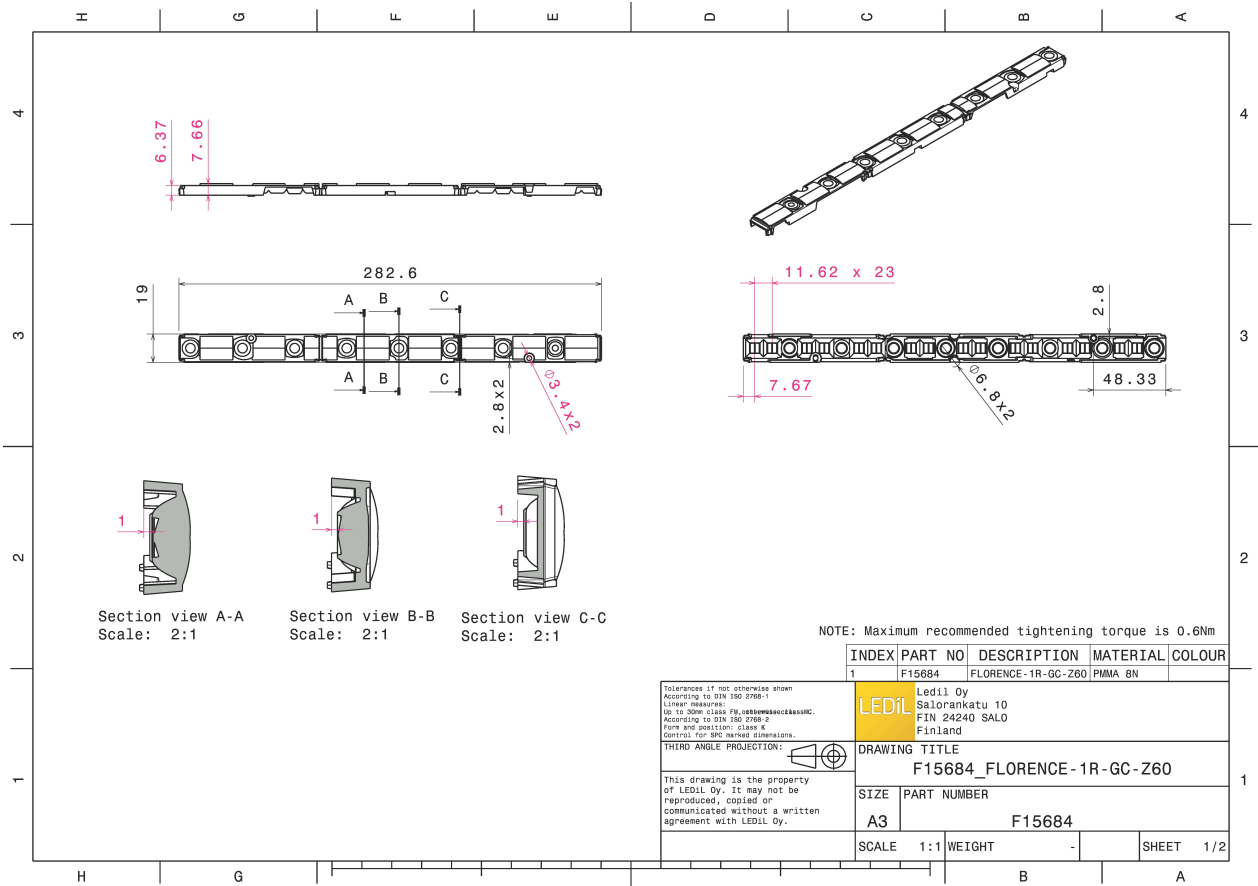
MATERIALS:

Component	Type	Material	Colour	Finish
FLORENCE-1R-GC-Z60	Linear lens	PMMA	clear	



ORDERING INFORMATION:

Component	Qty in box	MOQ	MPQ	Box weight (kg)
F15684_FLORENCE-1R-GC-Z60 » Box size: 398 x 298 x 265 mm	165	45	15	4.8

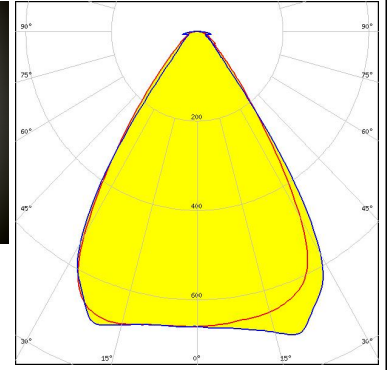


See also our general installation guide: www.ledil.com/installation_guide

OPTICAL RESULTS (MEASURED):

SAMSUNG

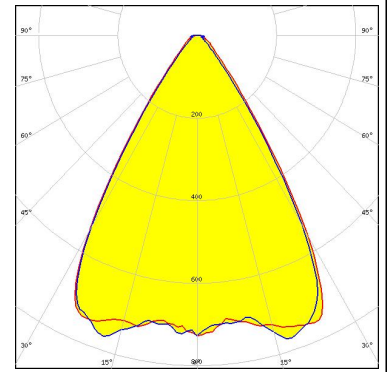
LED LT-S282N
FWHM / FWTM 70.0° / 97.0°
Efficiency 94 %
Peak intensity 0.7 cd/lm
LEDs/each optic 1
Light colour White
Required components:



OPTICAL RESULTS (SIMULATED):

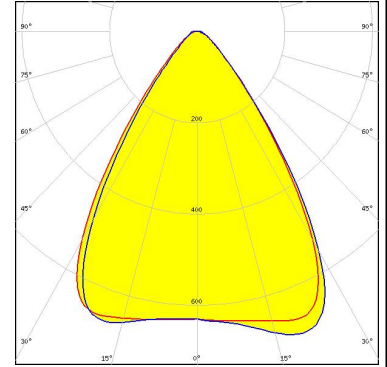
LUMILEDS

LED LUXEON 2835 Line
 FWHM / FWTM 58.0° / 84.0°
 Efficiency 93 %
 Peak intensity 0.8 cd/lm
 LEDs/each optic 1
 Light colour White
 Required components:



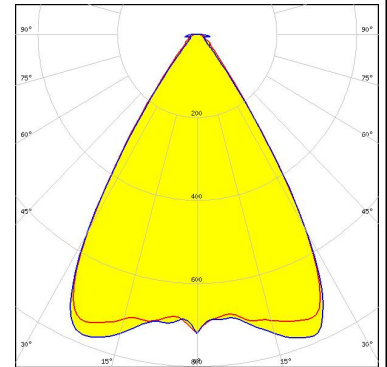
OSRAM

LED Duris E 2835
 FWHM / FWTM 64.0° / 96.0°
 Efficiency 94 %
 Peak intensity 0.7 cd/lm
 LEDs/each optic 1
 Light colour White
 Required components:



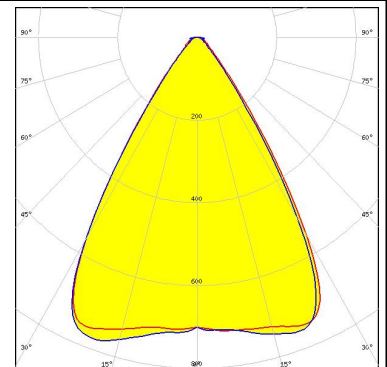
SAMSUNG

LED LH181B
 FWHM / FWTM 66.0° / 88.0°
 Efficiency 94 %
 Peak intensity 0.8 cd/lm
 LEDs/each optic 1
 Light colour White
 Required components:



SAMSUNG

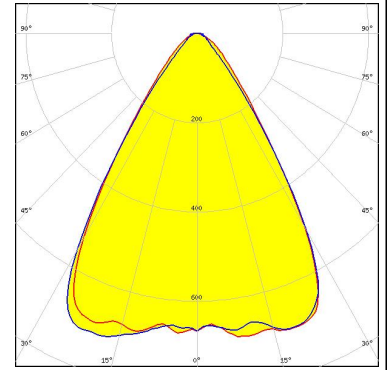
LED LM28xB Series
 FWHM / FWTM 58.0° / 83.0°
 Efficiency 94 %
 Peak intensity 0.8 cd/lm
 LEDs/each optic 1
 Light colour White
 Required components:



OPTICAL RESULTS (SIMULATED):

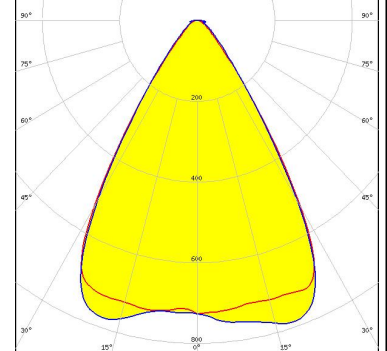
SAMSUNG

LED LM561B
 FWHM / FWTM 67.0° / 97.0°
 Efficiency 94 %
 Peak intensity 0.7 cd/lm
 LEDs/each optic 1
 Light colour White
 Required components:



SAMSUNG

LED LM561B Plus
 FWHM / FWTM 65.0° / 91.0°
 Efficiency 94 %
 Peak intensity 0.8 cd/lm
 LEDs/each optic 1
 Light colour White
 Required components:



SEOUL SEMICONDUCTOR
 LED SEOUL DC 3030C
 FWHM / FWTM 69.0° / 97.0°
 Efficiency 93 %
 Peak intensity 0.7 cd/lm
 LEDs/each optic 1
 Light colour White
 Required components:

