

## FLORENCE-1R-GC-ZT25

Asymmetric beam for wall-washing

### TECHNICAL SPECIFICATIONS:

Dimensions	19.0 x 282.6 mm
Height	6.6 mm
Fastening	screw
ROHS compliant	yes ⓘ

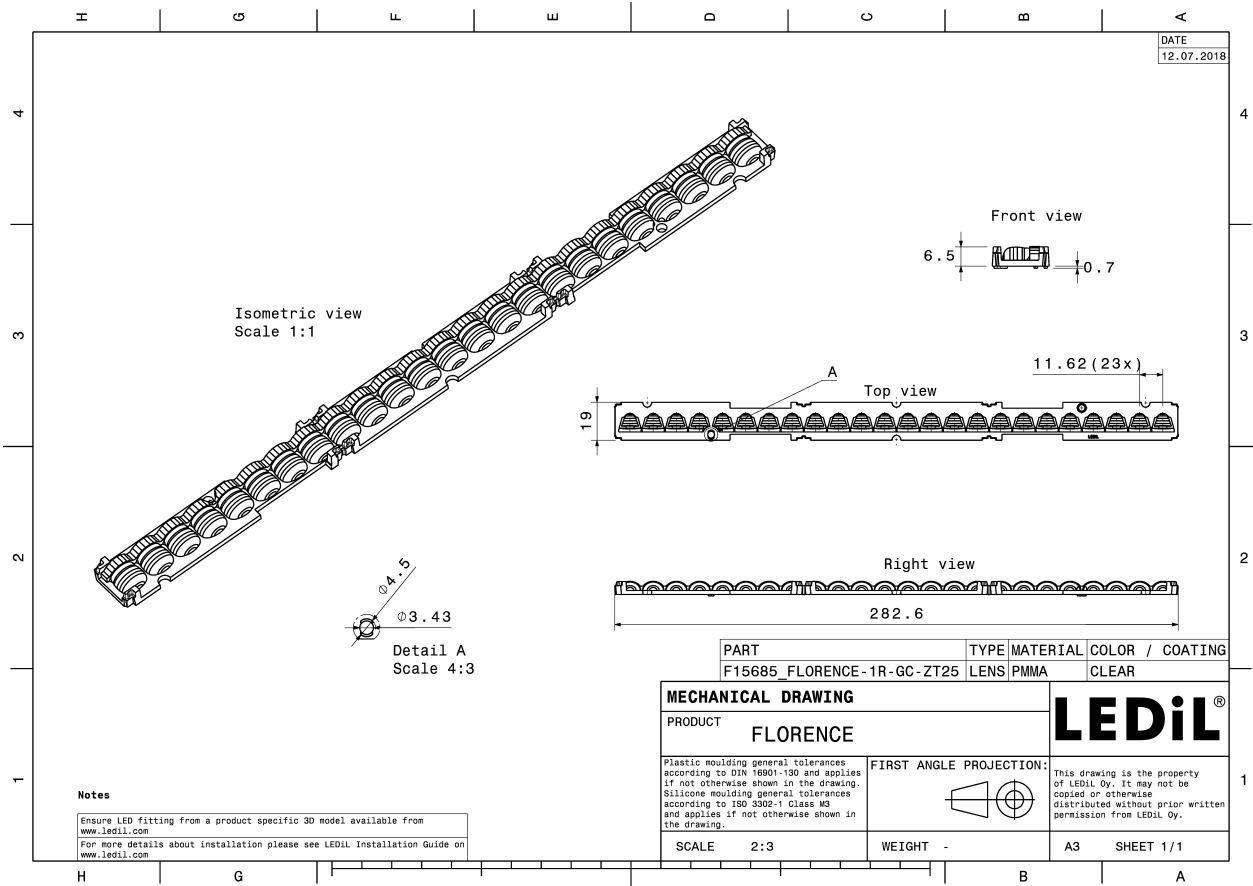
### MATERIAL SPECIFICATIONS:

Component	Type	Material	Colour	Finish
FLORENCE-1R-GC-ZT25	Linear lens	PMMA	clear	

### ORDERING INFORMATION:

Component	Qty in box	MOQ	MPQ	Box weight (kg)
F15685_FLORENCE-1R-GC-ZT25 » Box size: 398 x 298 x 265 mm	165	45	15	4.9



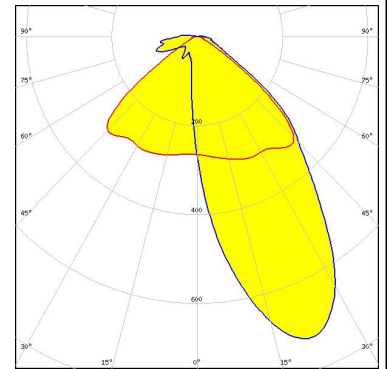


See also our general installation guide: [www.ledil.com/installation\\_guide](http://www.ledil.com/installation_guide)

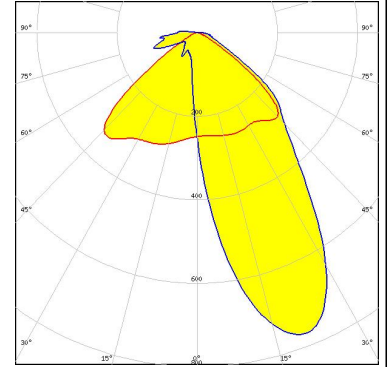
#### PHOTOMETRIC DATA (MEASURED):



LED NF2x757D  
FWHM / FWTM Asymmetric  
Efficiency 91 %  
Peak intensity 0.7 cd/lm  
LEDs/each optic 1  
Light colour White  
Required components:



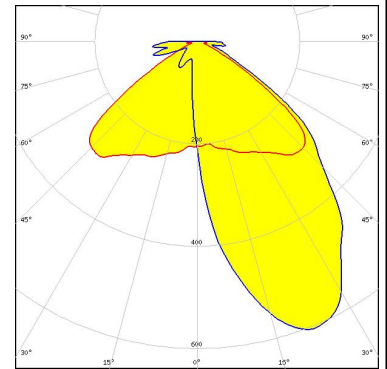
LED SEOUL DC 3030  
FWHM / FWTM Asymmetric  
Efficiency 94 %  
Peak intensity 0.8 cd/lm  
LEDs/each optic 1  
Light colour White  
Required components:



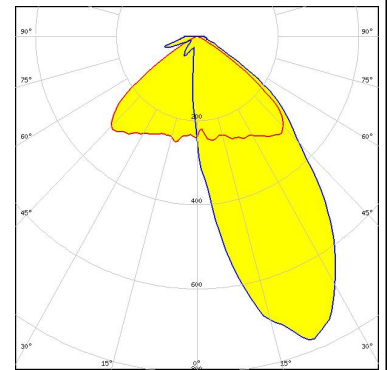
#### PHOTOMETRIC DATA (SIMULATED):



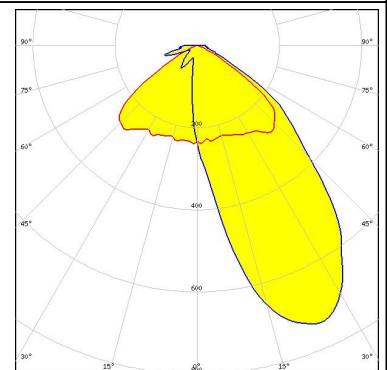
**LED** XD16  
**FWHM / FWTM** Asymmetric  
**Efficiency** 90 %  
**Peak intensity** 0.7 cd/lm  
**LEDs/each optic** 1  
**Light colour** White  
**Required components:**



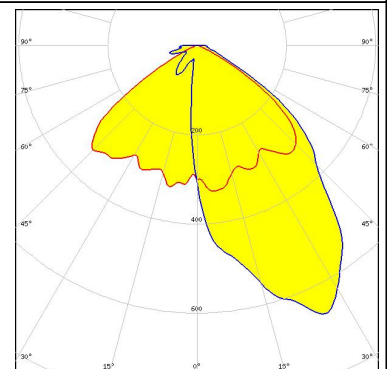
**LED** LUXEON 2835 Line  
**FWHM / FWTM** Asymmetric  
**Efficiency** 91 %  
**Peak intensity** 0.8 cd/lm  
**LEDs/each optic** 1  
**Light colour** White  
**Required components:**



**LED** Duris E 2835  
**FWHM / FWTM** Asymmetric  
**Efficiency** 92 %  
**Peak intensity** 0.8 cd/lm  
**LEDs/each optic** 1  
**Light colour** White  
**Required components:**



**LED** OSOLON Square CSSRM2/CSSRM3  
**FWHM / FWTM** Asymmetric  
**Efficiency** 93 %  
**Peak intensity** 0.7 cd/lm  
**LEDs/each optic** 1  
**Light colour** Red  
**Required components:**



#### PHOTOMETRIC DATA (SIMULATED):

	
SEOUL SEMICONDUCTOR	
LED	SEOUL DC 3030C
FWHM / FWTM	Asymmetric
Efficiency	92 %
Peak intensity	0.7 cd/lm
LEDs/each optic	1
Light colour	White
Required components:	

