

## JENNY-8X1-FT65

Forward throwing beam with peak in 65°. 8X1 variant.

### SPECIFICATION:

Dimensions	280.0 x 35.0 mm
Height	15.4 mm
Fastening	pin
ROHS compliant	yes ⓘ

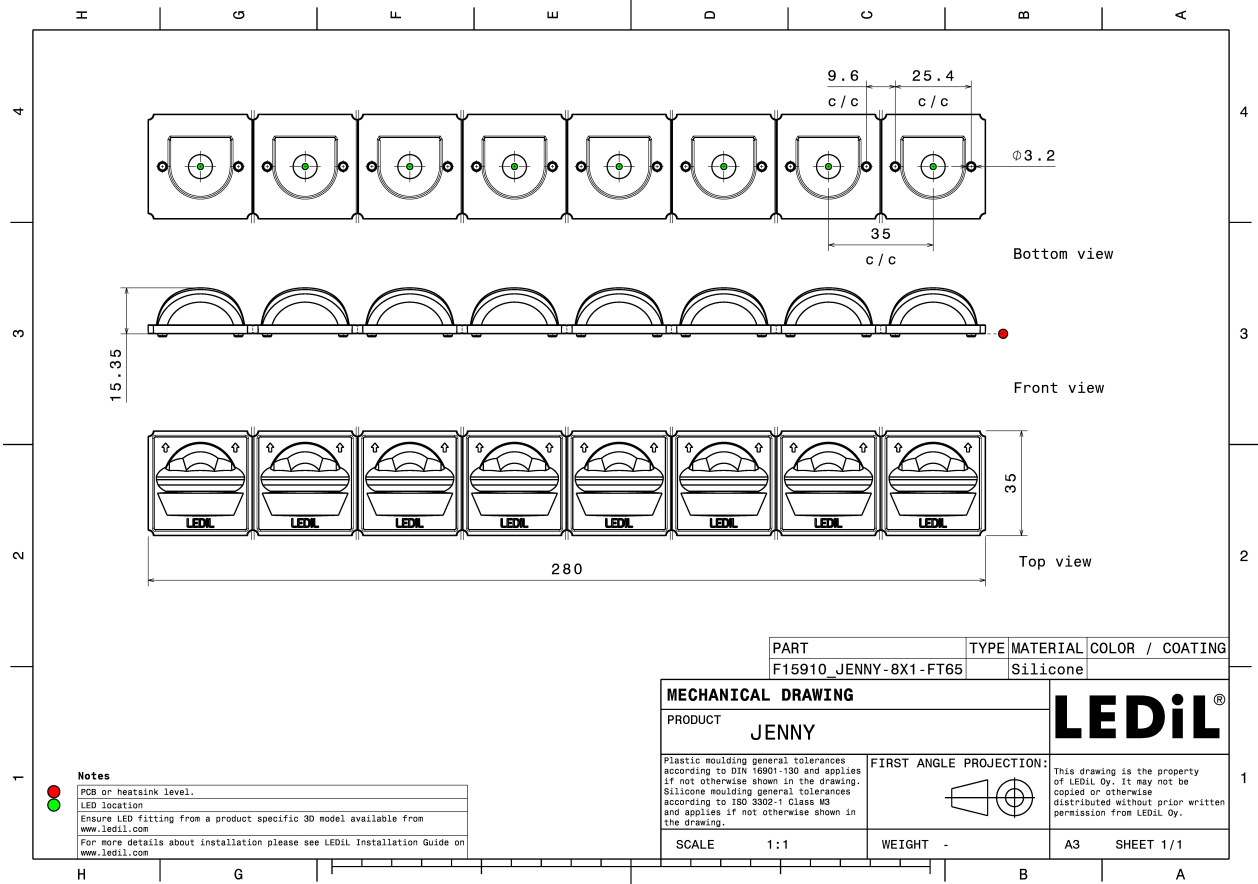


### MATERIALS:

Component	Type	Material	Colour	Finish
JENNY-8X1-FT65	Multi-lens	Silicone	clear	

### ORDERING INFORMATION:

Component	Qty in box	MOQ	MPQ	Box weight (kg)
F15910_JENNY-8X1-FT65 » Box size: 398 x 298 x 265 mm	140	20	10	7.9

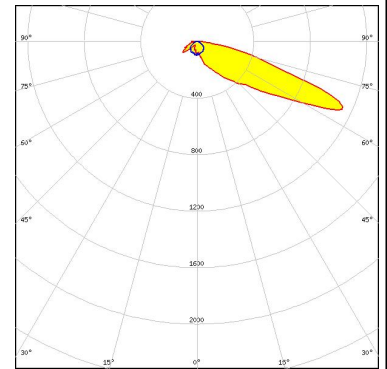


See also our general installation guide: [www.ledil.com/installation\\_guide](http://www.ledil.com/installation_guide)

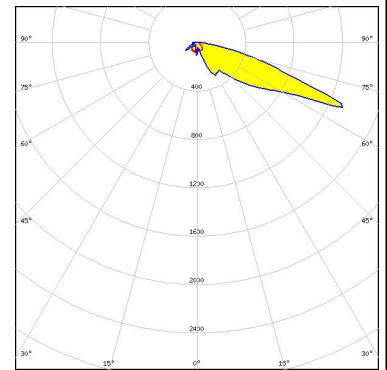
#### OPTICAL RESULTS (SIMULATED):



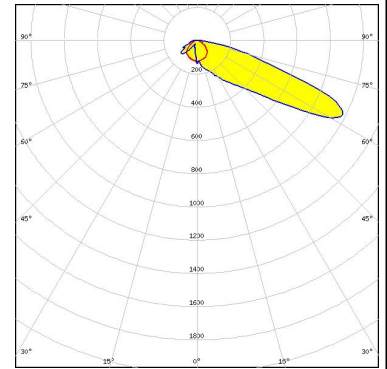
LED XHP50.2  
 FWHM / FWTM Asymmetric  
 Efficiency 93 %  
 Peak intensity 1.2 cd/lm  
 LEDs/each optic 1  
 Light colour White  
 Required components:



LED XP-G3  
 FWHM / FWTM Asymmetric  
 Efficiency 94 %  
 Peak intensity 1.4 cd/lm  
 LEDs/each optic 1  
 Light colour White  
 Required components:



LED LUXEON 7070  
 FWHM / FWTM Asymmetric  
 Efficiency 89 %  
 Peak intensity 1 cd/lm  
 LEDs/each optic 1  
 Light colour White  
 Required components:



LED LUXEON M/MX  
 FWHM / FWTM Asymmetric  
 Efficiency 92 %  
 Peak intensity 1 cd/lm  
 LEDs/each optic 1  
 Light colour White  
 Required components:

#### OPTICAL RESULTS (SIMULATED):



LED	NV4x144A
FWHM / FWTM	Asymmetric
Efficiency	73 %
Peak intensity	1 cd/lm
LEDs/each optic	1
Light colour	White
Required components:	

