

### LINNEA-GC-60

~60° wide beam

#### SPECIFICATION:

Dimensions	285.1 x 40.0 mm
Height	12.2 mm
Fastening	clips
ROHS compliant	yes ⓘ

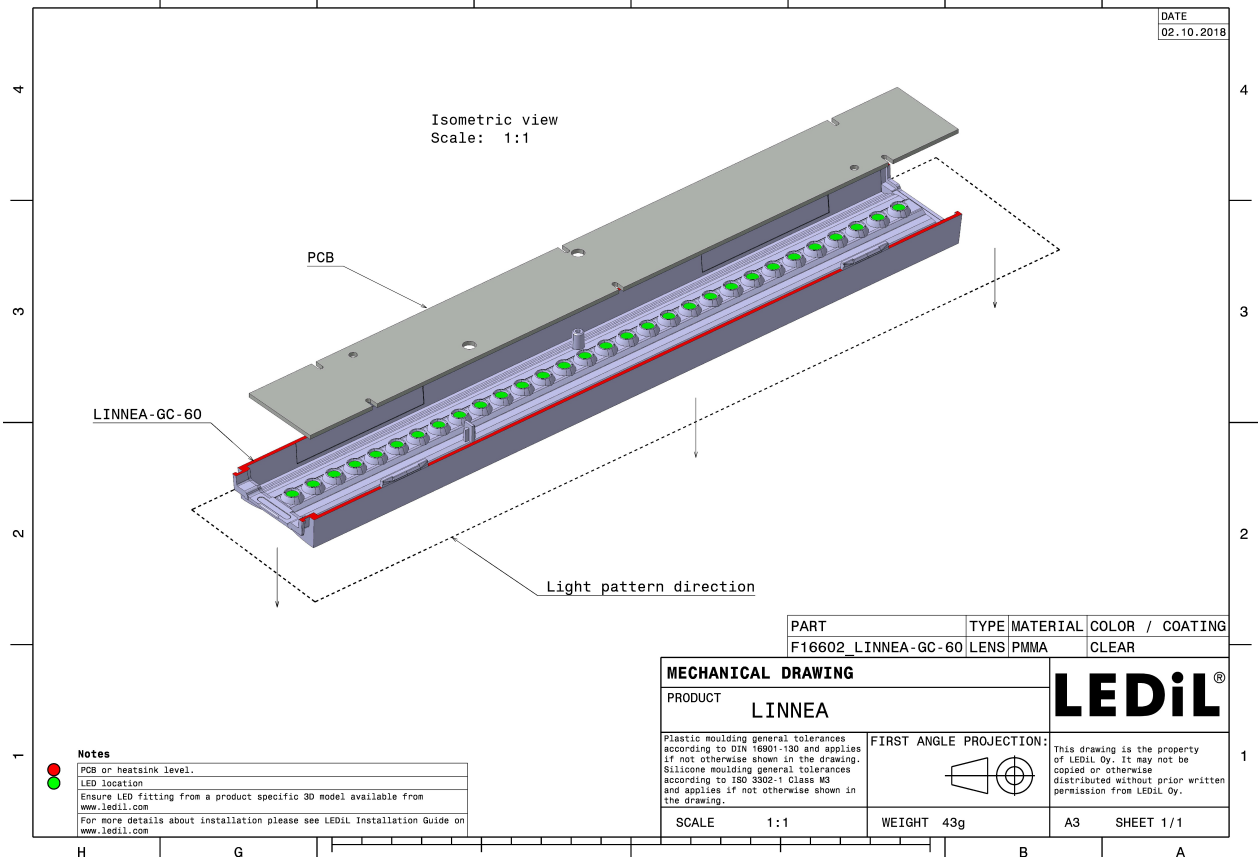
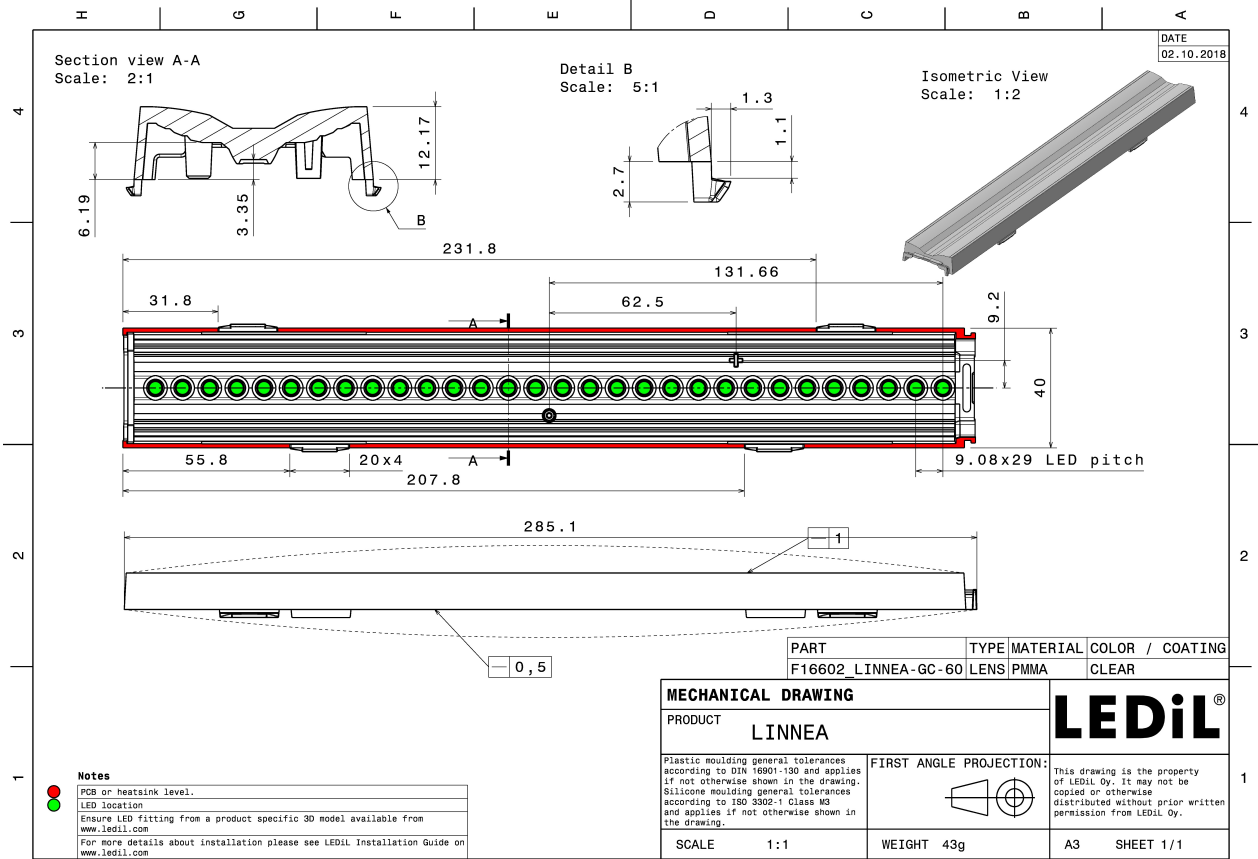
#### MATERIALS:

Component	Type	Material	Colour	Finish
LINNEA-GC-60	Linear lens	PMMA	clear	

#### ORDERING INFORMATION:

Component	Qty in box	MOQ	MPQ	Box weight (kg)
F16602_LINNEA-GC-60 » Box size: 398 x 298 x 265 mm	144	36	9	7.9



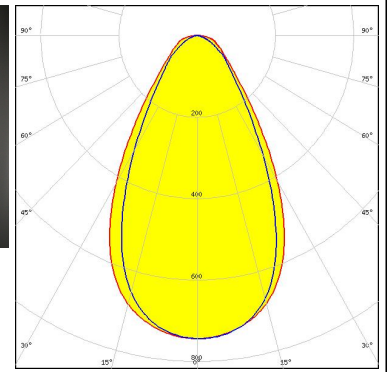
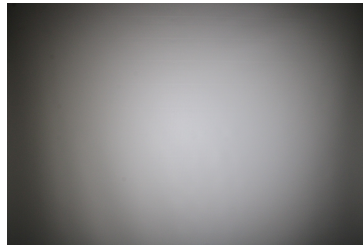


See also our general installation guide: [www.ledil.com/installation\\_guide](http://www.ledil.com/installation_guide)

#### OPTICAL RESULTS (MEASURED):

**MST** | *Your solutions*

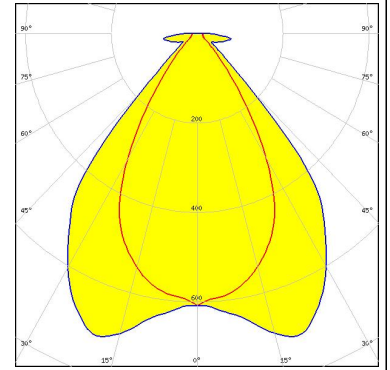
LED	LinLED 280x24mm 1100lm 830 2C 30V LINNEA-GC G1
FWHM / FWTM	62.0° / 118.0°
Efficiency	90 %
Peak intensity	0.8 cd/lm
LEDs/each optic	1
Light colour	White
Required components:	



#### OPTICAL RESULTS (SIMULATED):

#### LUMILEDS

LED LUXEON 2835 Line  
FWHM / FWTM 62.0 + 82.0° / 88.0 + 102.0°  
Efficiency 89 %  
Peak intensity 0.7 cd/lm  
LEDs/each optic 2  
Light colour White  
Required components:



#### SAMSUNG

LED LM561B Plus  
FWHM / FWTM 68.0 + 60.0° / 94.0 + 86.0°  
Efficiency 93 %  
Peak intensity 0.8 cd/lm  
LEDs/each optic 1  
Light colour White  
Required components:

