

## SOLDER-CLIP-A

Reel with solder clips compatible with TINA-SC and LEILA-SC lenses

### SPECIFICATION:

Dimensions	5.0 x 4.0 mm
Height	5 mm
ROHS compliant	yes ⓘ

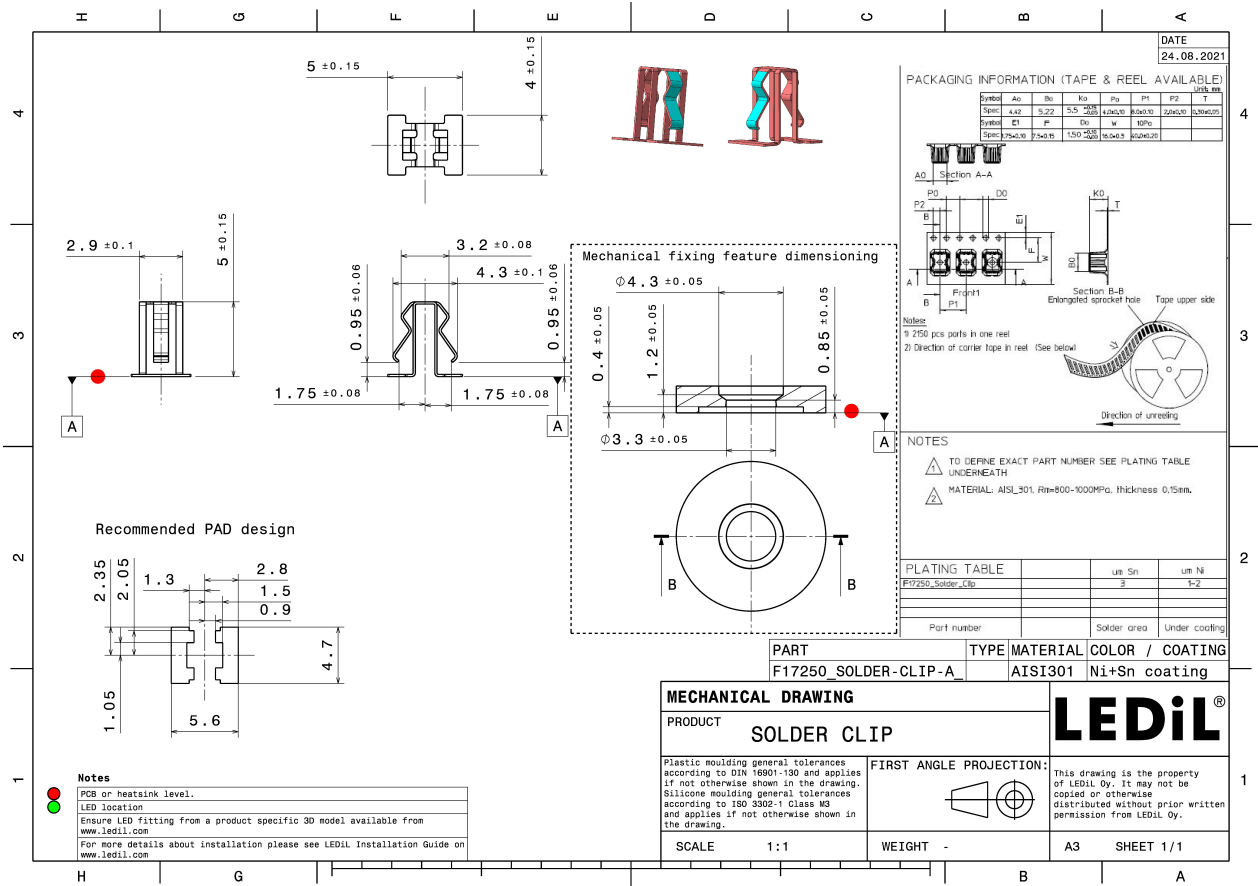


### MATERIALS:

Component	Type	Material	Colour	Finish
SOLDER-CLIP-A	Accessory	Stainless steel	metal	

### ORDERING INFORMATION:

Component	Qty in box	MOQ	MPQ	Box weight (kg)
F17250_SOLDER-CLIP-A » Box size: 400 x 400 x 300 mm	30100	2150	2150	7.8



See also our general installation guide: [www.ledil.com/installation\\_guide](http://www.ledil.com/installation_guide)

### AVAILABLE LEDiL PRODUCTS:

Product name	Description
CP17587_LEILA-SC-RS	~9.6° spot beam
CP17588_LEILA-SC-D	~14° diffused spot beam
CP17589_LEILA-SC-M	~25° wide beam
CP17590_LEILA-SC-O-90	~10° x 40° oval beam
CP17591_LEILA-SC-W	~40° wide beam
CP17592_LEILA-SC-O-WAS	Asymmetric beam for wall-washing
CP17593_TINA-SC-D	~16° diffused spot beam
CP17594_TINA-SC-RS	~14° spot beam
CP17595_TINA-SC-M	~30° wide beam
CP17596_TINA-SC-O	~35° + 15° oval beam
CP17597_TINA-SC-W	~45° wide beam
CP17598_TINA-SC-O-WAS	Asymmetric beam for wall-washing
CP18760_LEILA-SC-OW-90	~30° x 55° oval beam
CP18761_LEILA-SC-WW	~55° wide beam.
CP19303_LEILA-Y-SC-RS	~10° spot beam.
CP19310_LEILA-Y-SC-SS	~14° smooth spot beam