

LINDA-40-W

~60° + 110° wide beam

SPECIFICATION:

Dimensions	40.0 x 1140.0 mm
Height	8.8 mm
Fastening	snaps
ROHS compliant	yes ⓘ

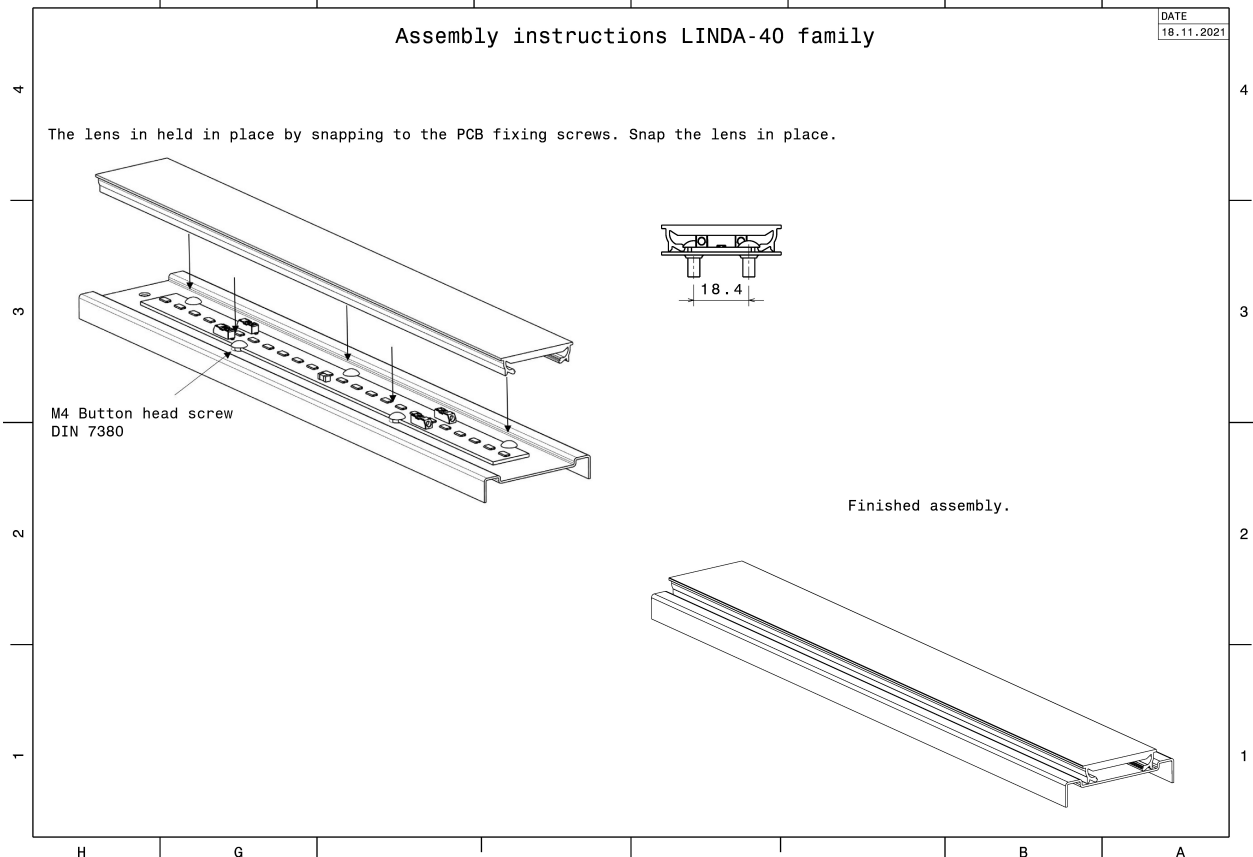
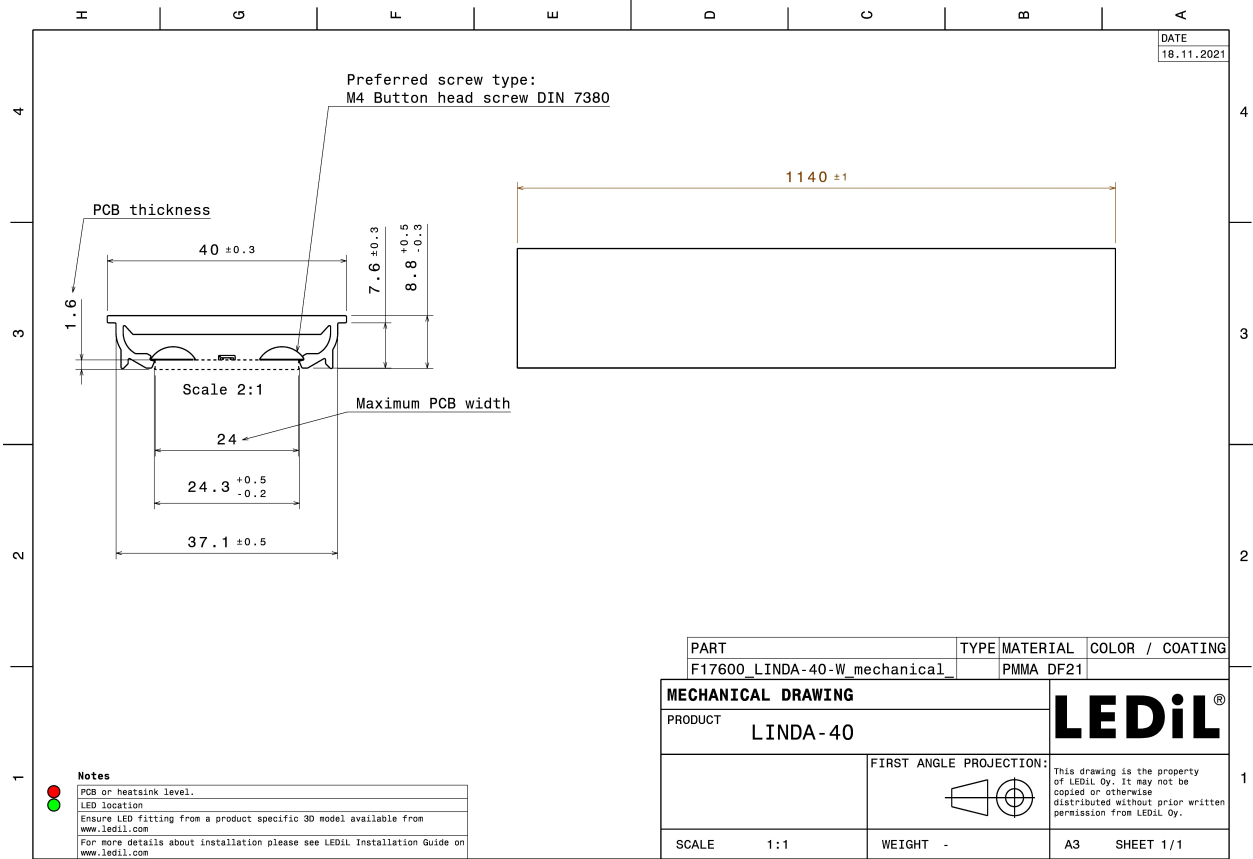
MATERIALS:

Component	Type	Material	Colour	Finish
LINDA-40-W	Linear lens	PMMA	milky	



ORDERING INFORMATION:

Component	Qty in box	MOQ	MPQ	Box weight (kg)
F17600_LINDA-40-W » Box size: 1190 x 182 x 165 mm	64	64	64	10.2

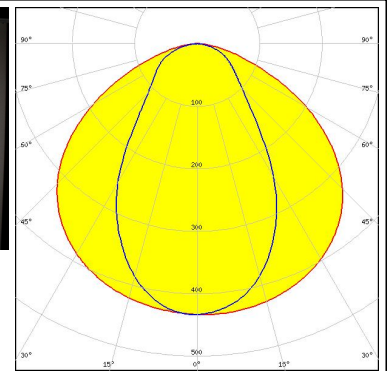


See also our general installation guide: www.ledil.com/installation_guide

OPTICAL RESULTS (MEASURED):

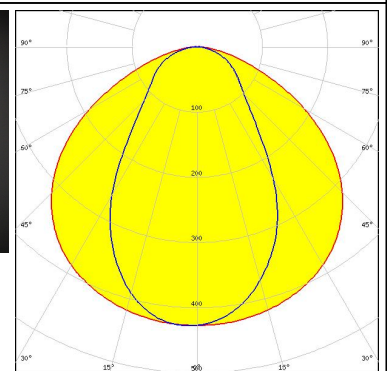
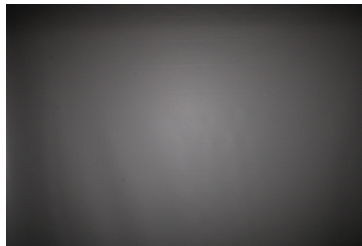
PHILIPS

LED Fortimo LED Strip 1ft 1100lm FC HV5 & LV5
FWHM / FWTM 116.0 + 65.0° / 156.0 + 140.0°
Efficiency 82 %
Peak intensity 0.4 cd/lm
LEDs/each optic 1
Light colour White
Required components:



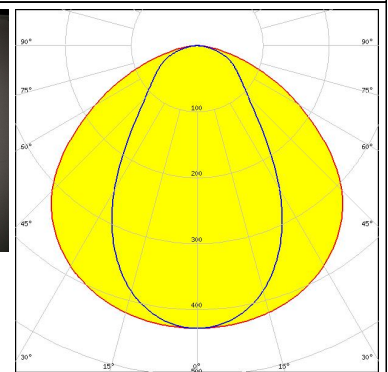
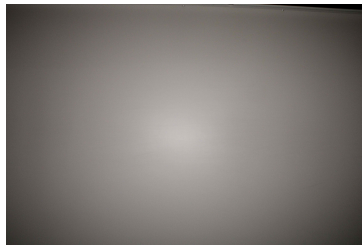
PHILIPS

LED Fortimo LED Strip 1ft 2000lm FC HV6
FWHM / FWTM 115.0 + 65.0° / 156.0 + 140.0°
Efficiency 82 %
Peak intensity 0.4 cd/lm
LEDs/each optic 1
Light colour White
Required components:



PHILIPS

LED Fortimo LED Strip 1ft 650lm FC HV5 & LV5
FWHM / FWTM 112.0 + 67.0° / 155.0 + 139.0°
Efficiency 83 %
Peak intensity 0.4 cd/lm
LEDs/each optic 1
Light colour White
Required components:

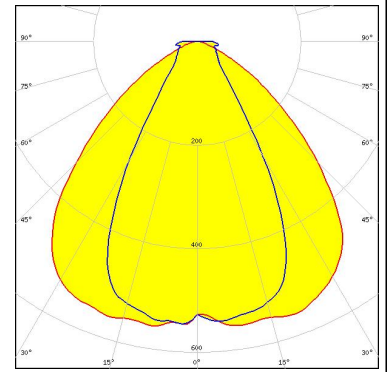


OPTICAL RESULTS (SIMULATED):

OSRAM

Opto Semiconductors

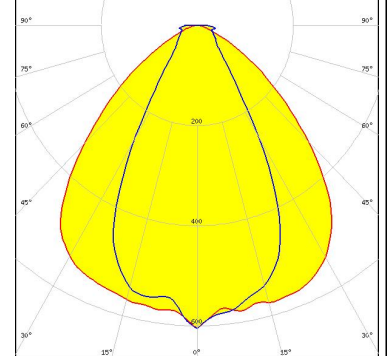
LED OSCONIQ P 3030
 FWHM / FWTM 96.0 + 58.0° / 130.0 + 98.0°
 Efficiency 87 %
 Peak intensity 0.6 cd/lm
 LEDs/each optic 1
 Light colour Red
 Required components:



OSRAM

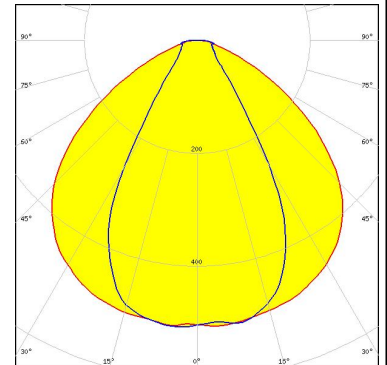
Opto Semiconductors

LED OSCONIQ P 3030
 FWHM / FWTM 92.0 + 56.0° / 129.0 + 92.0°
 Efficiency 87 %
 Peak intensity 0.6 cd/lm
 LEDs/each optic 1
 Light colour White
 Required components:



SAMSUNG

LED LM28xB Series
 FWHM / FWTM 108.0 + 60.0° / 146.0 + 92.0°
 Efficiency 84 %
 Peak intensity 0.5 cd/lm
 LEDs/each optic 1
 Light colour White
 Required components:



SAMSUNG

LED LM301B
 FWHM / FWTM 88.0 + 56.0° / 128.0 + 92.0°
 Efficiency 84 %
 Peak intensity 0.6 cd/lm
 LEDs/each optic 1
 Light colour White
 Required components:

