

HEKLA-RZ-LENS

Colour mixing sublens for HEKLA-SOCKETS
and HEKLA-G2 connectors

TECHNICAL SPECIFICATIONS:

Dimensions	Ø 33.6 mm
Height	2.9 mm
Fastening	socket
ROHS compliant	yes ⓘ

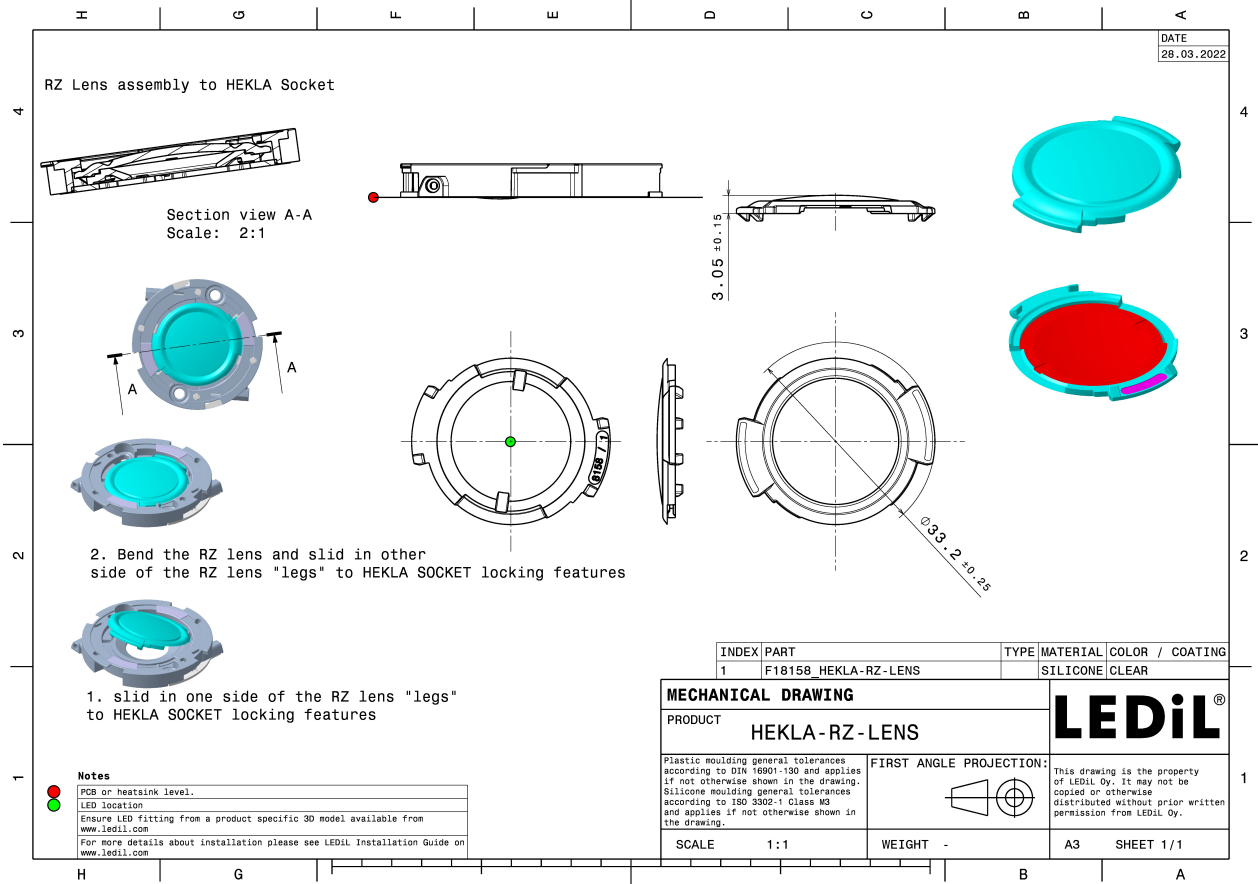
MATERIAL SPECIFICATIONS:

Component	Type	Material	Colour	Finish
HEKLA-RZ-LENS	Accessory	Silicone	clear	

ORDERING INFORMATION:

Component	Qty in box	MOQ	MPQ	Box weight (kg)
F18158_HEKLA-RZ-LENS » Box size: 398 x 298 x 140 mm	3150	45	45	2.7





See also our general installation guide: www.ledil.com/installation_guide

AVAILABLE LEDiL PRODUCTS:

Product name	Description
F14988_HEKLA-SOCKET-E	Version compatible with COBs of 15.8 x 15.8 mm packages and max 14.3 mm LES size
F15253_HEKLA-SOCKET-A	Version compatible with COBs of 12.5 x 12.5 mm packages and max 9 mm LES size
CP17782_AMY-70-S-C	~18° spot beam. Assembly with holder C compatible with HEKLA sockets and connectors. Black version.
CP17783_AMY-70-M-C	~24° medium beam. Assembly with holder C compatible with HEKLA sockets and connectors. Black version.