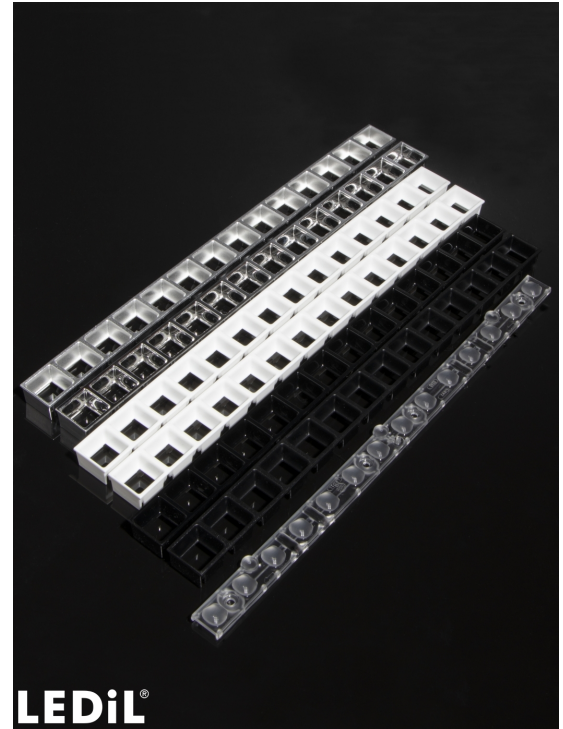


DAISY-MINI-FT-D

Forward throwing beam for freestanding office luminaires

TECHNICAL SPECIFICATIONS:

Dimensions	275.0 x 16.1 mm
Height	6.2 mm
Fastening	pin, screw
ROHS compliant	yes ⓘ



MATERIAL SPECIFICATIONS:

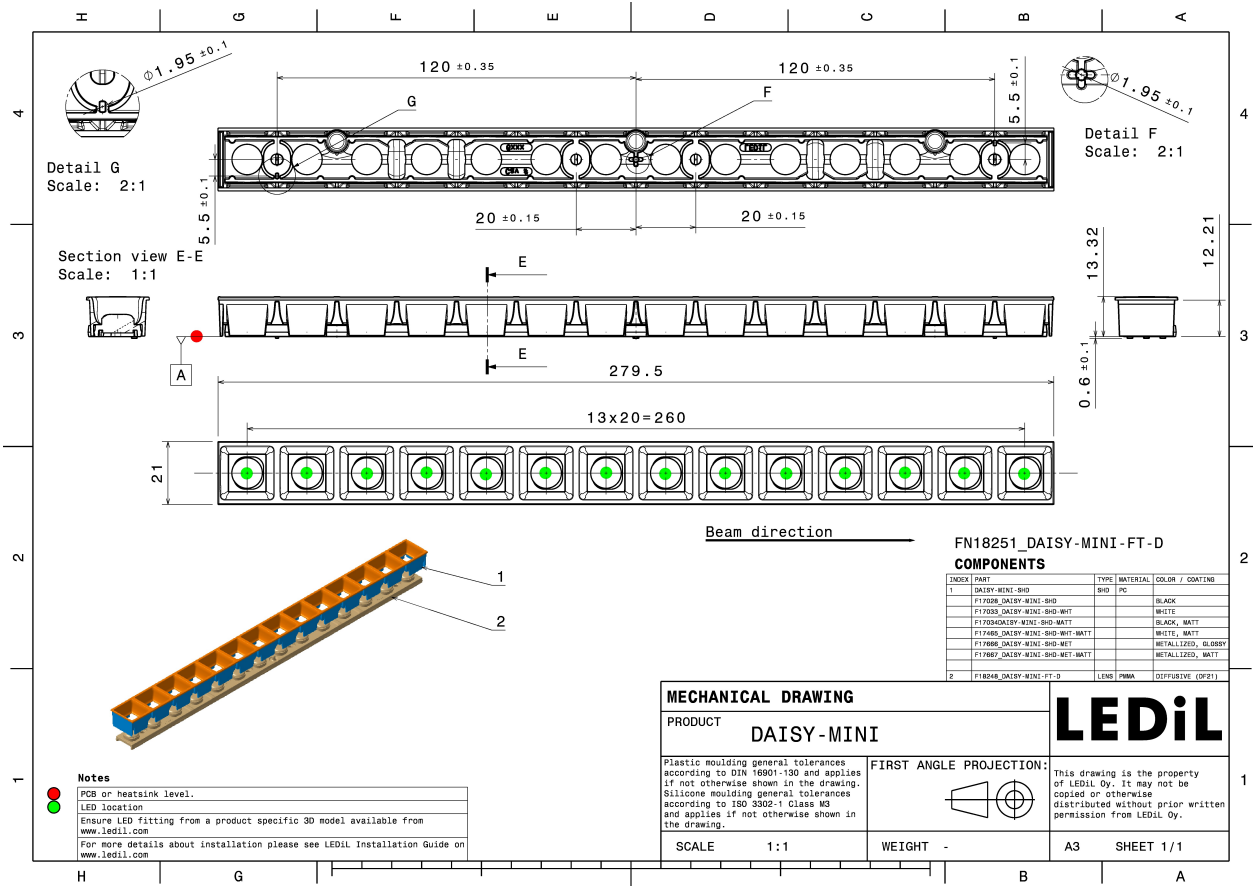
Component	Type	Material	Colour	Finish
F18248_DAISY-MINI-FT-D	Linear lens	PMMA	clear	
F17028_DAISY-MINI-SHD	Shade	PC	black	gloss
F17033_DAISY-MINI-SHD-WHT	Shade	PC	white	gloss
F17034_DAISY-MINI-SHD-MATT	Shade	PC	black	matt
F17465_DAISY-MINI-SHD-WHT-MATT	Shade	PC	white	matt
F17666_DAISY-MINI-SHD-MET	Shade	PC	metal	gloss
F17667_DAISY-MINI-SHD-MET-MATT	Shade	PC	metal	matt

ORDERING INFORMATION:

Quantities for one set:

Linear lens	1
Shade	1

Component		Qty in box	MOQ	MPQ	Box weight (kg)
F18248_DAISY-MINI-FT-D » Box size: 398 x 298 x 265 mm	Linear lens	252	252	12	6.0
F17465_DAISY-MINI-SHD-WHT-MATT » Box size: 398 x 298 x 265 mm	Shade	252	252	4	6.2
F17028_DAISY-MINI-SHD » Box size: 398 x 298 x 265 mm	Shade	252	252	4	5.9
F17666_DAISY-MINI-SHD-MET » Box size: 398 x 298 x 265 mm	Shade	252	252	4	5.9
F17033_DAISY-MINI-SHD-WHT » Box size: 398 x 298 x 265 mm	Shade	252	252	4	5.9
F17667_DAISY-MINI-SHD-MET-MATT » Box size: 398 x 298 x 265 mm	Shade	252	252	4	6.2
F17034_DAISY-MINI-SHD-MATT » Box size: 398 x 298 x 265 mm	Shade	252	252	4	6.1

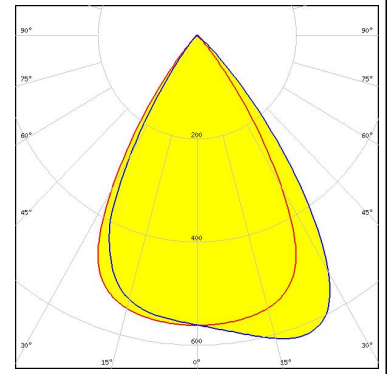


See also our general installation guide: www.ledil.com/installation_guide

PHOTOMETRIC DATA (MEASURED):

SAMSUNG

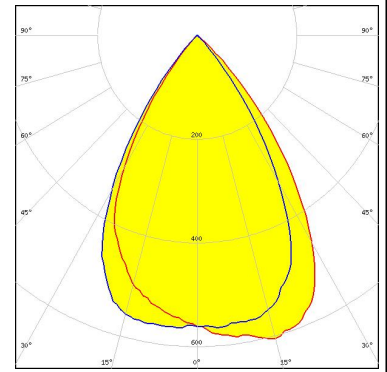
LED	LM28xB Series
FWHM / FWTM	Asymmetric
Efficiency	69 %
Peak intensity	0.6 cd/lm
LEDs/each optic	1
Light colour	White
Required components:	



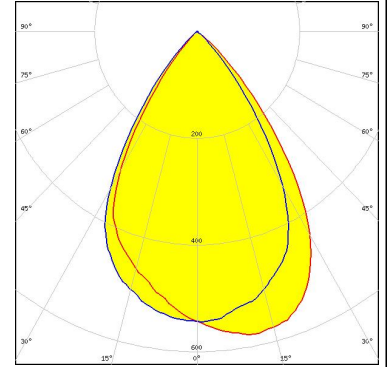
PHOTOMETRIC DATA (SIMULATED):



LED LUXEON 5050 Square LES
FWHM / FWTM 64.4 + 65.4° / 84.5 + 87.5°
Efficiency 64 %
Peak intensity 0.6 cd/lm
LEDs/each optic 1
Light colour White
Required components:
F17028_DAISY-MINI-SHD



LED LM28xB Series
FWHM / FWTM 66.4 + 67.4° / 88.5 + 89.5°
Efficiency 61 %
Peak intensity 0.6 cd/lm
LEDs/each optic 2
Light colour White
Required components:
F17028_DAISY-MINI-SHD



LED LM28xB Series
FWHM / FWTM 64.4 + 65.4° / 80.4 + 82.5°
Efficiency 66 %
Peak intensity 0.6 cd/lm
LEDs/each optic 1
Light colour White
Required components:
F17028_DAISY-MINI-SHD

