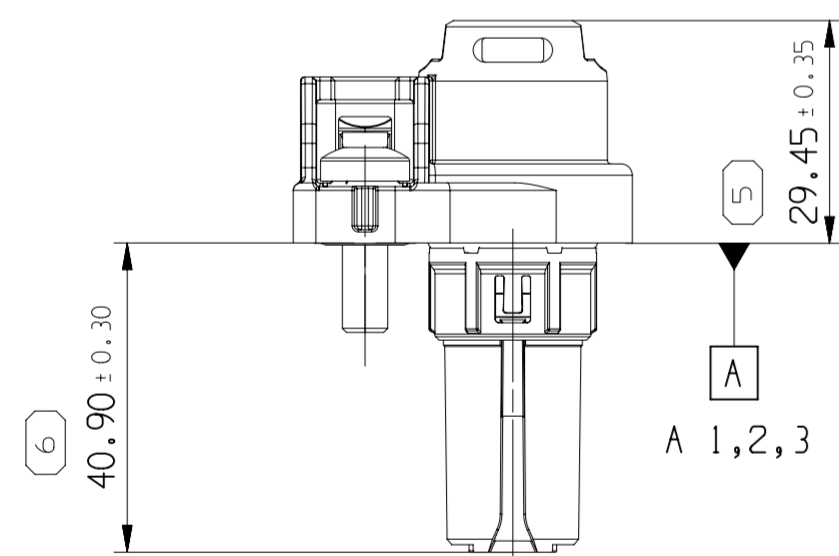
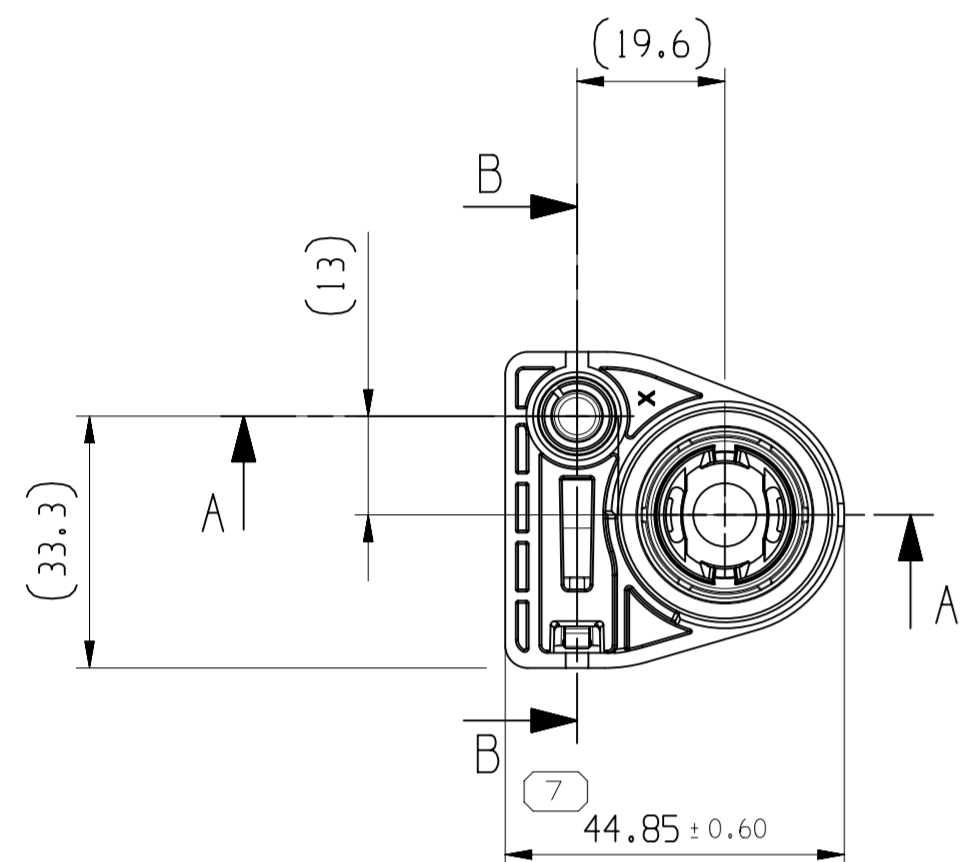
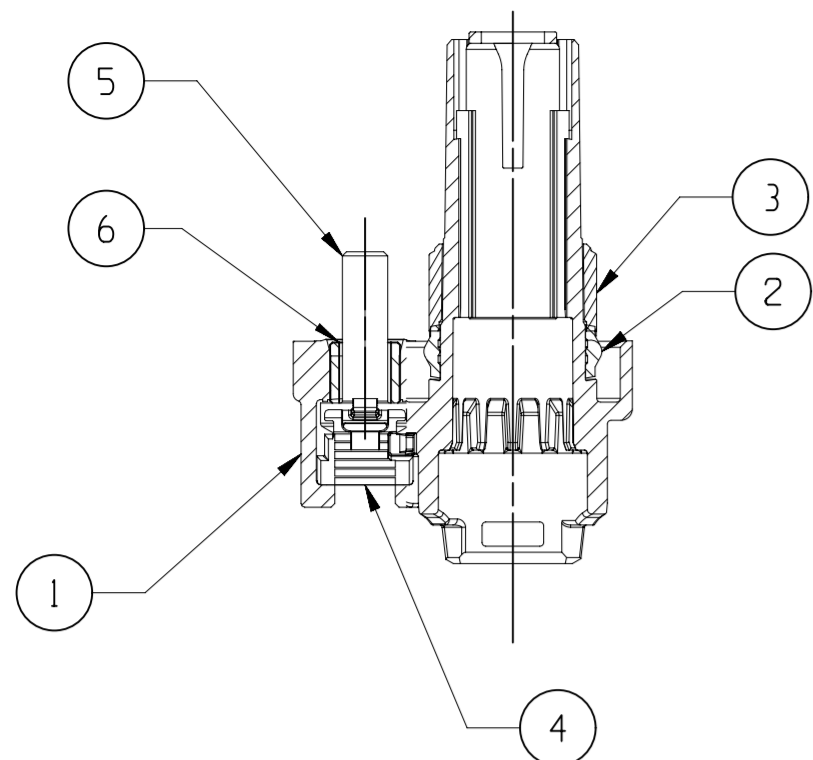


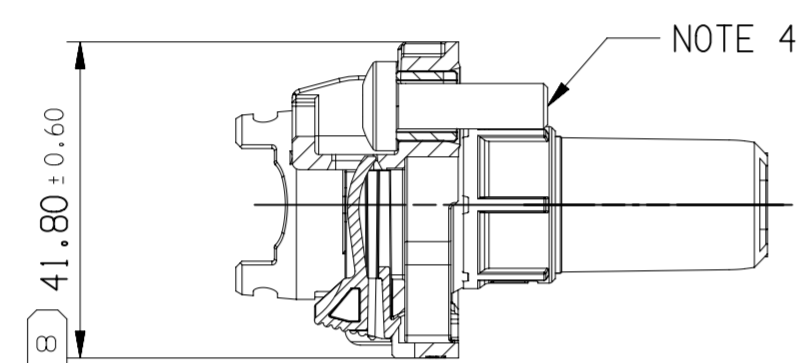
SECTION A-A



COMPONENTS TABLE

N°	DESIGNATION	APTIV PN	QUANTITY
	FEMALE CONNECTOR	35098437	
1	OUTER PLUG	35096611	1
2	UNIT SEAL	35082112	1
3	PLASTIC CAP	35096049	1
4	SPA	35082103	1
5	SCREW M6x20 (ISO 14583)	35158044	1
6	METALLIC INSERT	33508801	1

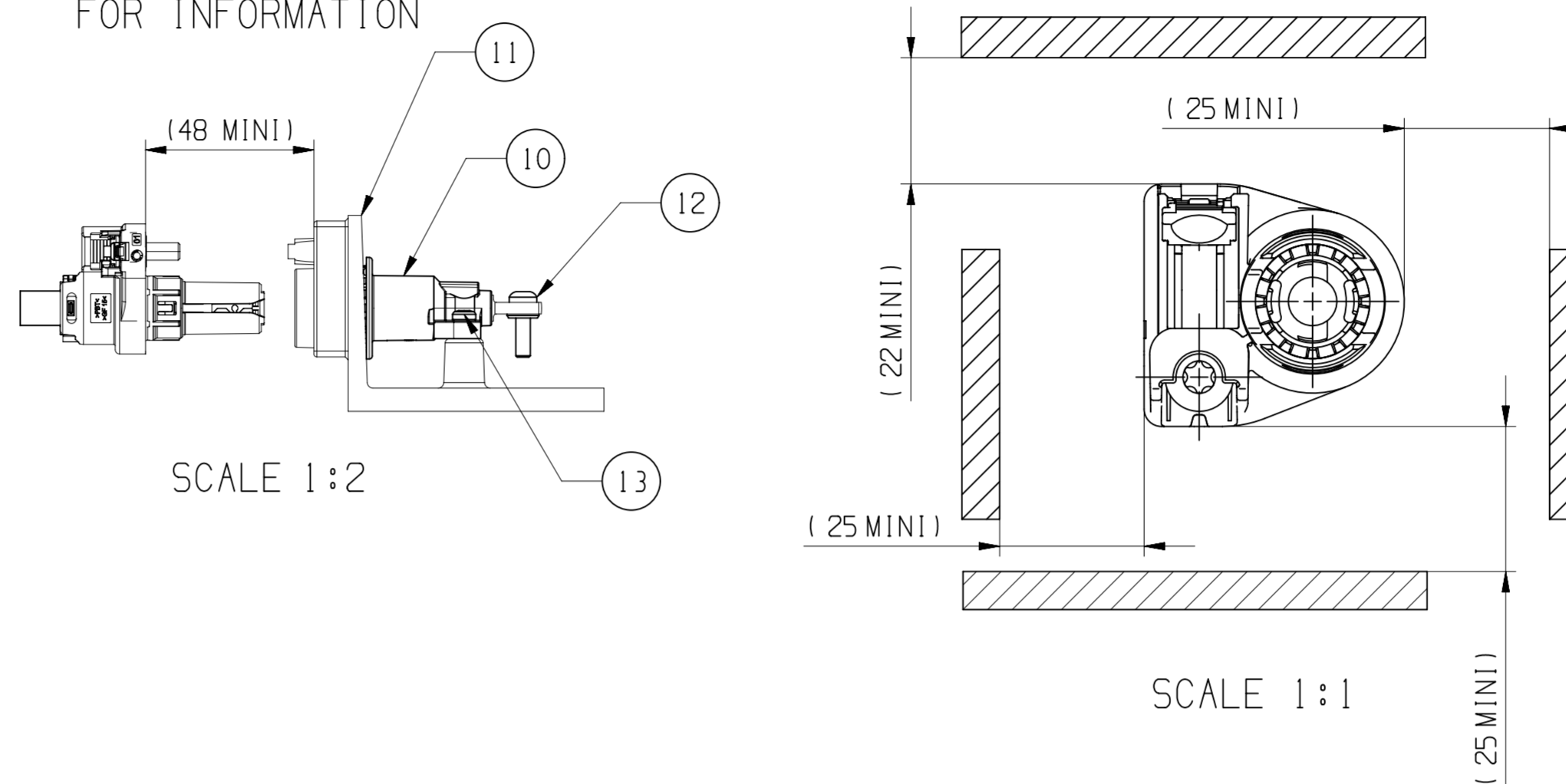
SECTION B-B



ASSOCIATED PARTS

N°	DESIGNATION	APTIV PN	DRAWING	QUANTITY
10	HEADER	35098440	35098443	1
11	INTERFACE	-	35099339	1
12	M5 SCREW	-	-	1
13	M4 SCREW	-	-	1

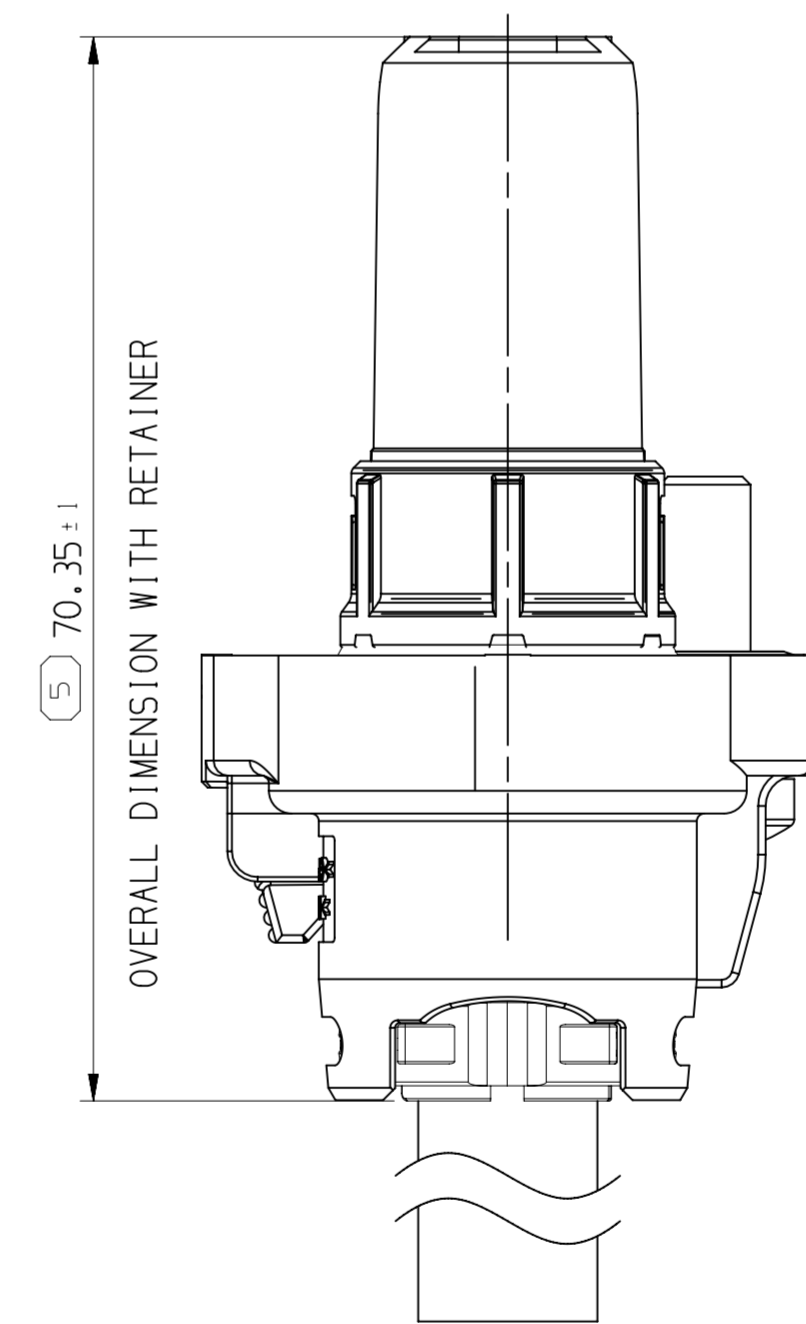
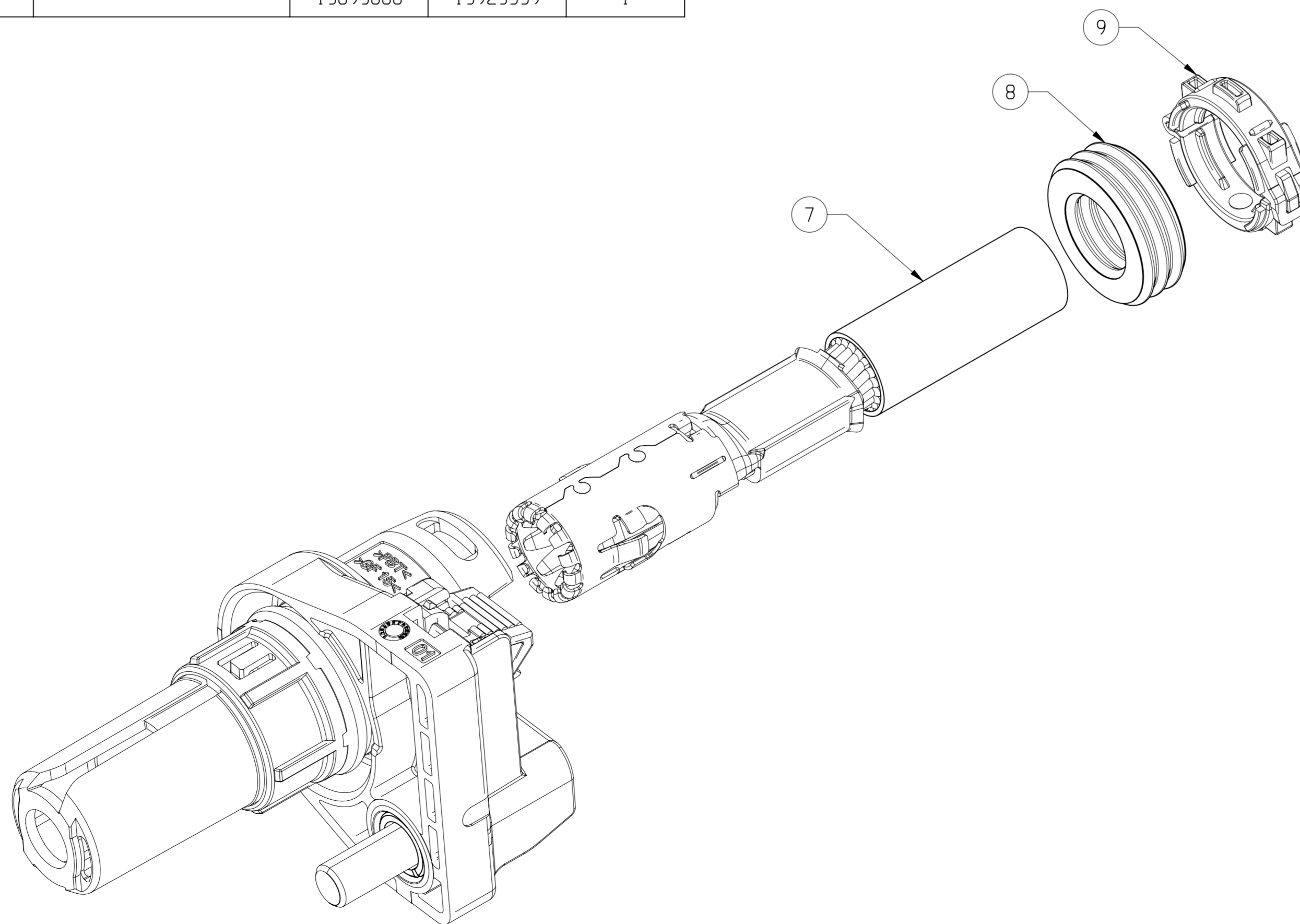
FREE SPACE AREA NEEDED TO MATE AND UNMATE THE FEMALE CONNECTOR ON THE BOX FOR INFORMATION



ASSOCIATED PARTS

N°	DESIGNATION	APTIV PN	QUANTITY
7	RCS800 FEMALE TERMINAL	13893887	1
8	RETAINER	13893889	1
9	SWS	35mm <sup>2</sup>	50mm <sup>2</sup>
		13893888	13923559

EQUIPPED FEMALE CONNECTOR



SCALE 2:1

A LINE DRAWN THROUGH A PART NUMBER INDICATES THAT PHYSICAL PARTS ARE NOT AVAILABLE FOR ORDERING.

PART NUMBERS THAT DO NOT HAVE A LINE PRESENT INDICATE THAT PHYSICAL PARTS ARE AVAILABLE FOR ORDERING.

CONTACT APTIV SALES TO ASSURE AVAILABILITY OF PARTS.

LA LIGNE TRACÉE SUR LA RÉFÉRENCE PIÈCE INDIQUE QUE LA PIÈCE N'EST PAS DISPONIBLE À LA COMMANDE.

LES RÉFÉRENCES PIÈCES QUI NE SONT PAS BARRÉES INDICENT QUE CELLES-CI SONT DISPONIBLES PHYSIQUEMENT POUR ÊTRE COMMANDEES.

CONTACTER LE SERVICE COMMERCIAL DE APTIV POUR S'ASSURER DE LA DISPONIBILITÉ DES PIÈCES.

SHARP CORNER TOLERANCE R 0.2 MAX R 0.1 MAX

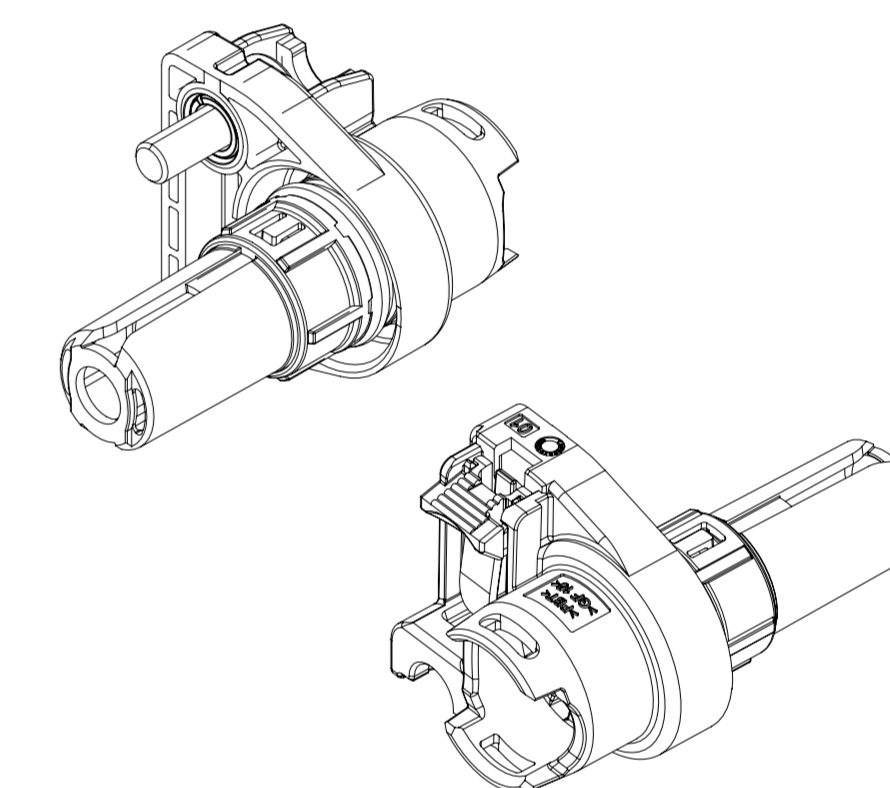
NOTE:

- 1- APTIV PRODUCT SPECIFICATION: FE PS 16 010
- 2- INTERFACE DRAWING: 35099339
- 3- USER'S MANUAL: PU233
- 4- FOR TORX 30 SCREW DRIVER SCREWING TORQUE 8N.m±10%

SCALE 2:1

DWG STATUS				REVISION HISTORY				AUTH	DR	APVD 1	APVD 2	
DATE	STG	REV	N/P/CHG	ZONE	INITIAL RELEASE							
15AP19	R	01								K.MANIRAJAN	E.LAM	J.FABRE

3D VIEW SCALE 1:1



• APTIV •

CONNECTION SYSTEMS Chennai, India

COPYRIGHT 2019 APTIV. ALL RIGHTS RESERVED. THIS DRAWING IS THE PROPERTY OF APTIV AND CONTAINS APTIV CONFIDENTIAL INFORMATION. THE REPRODUCTION, DISTRIBUTION AND UTILIZATION OF THIS DOCUMENT OR ITS RELATED CAD MATH DATA, AS WELL AS COMMUNICATION OF ANY CONTENT TO OTHERS, WITHOUT EXPRESS AUTHORIZATION, IS PROHIBITED.

CE PLAN EST LE PROPRIÉTÉ DE DELPHI CORPORATION ET CONTIENT DES INFORMATIONS DELPHI CONFIDENTIELLES. LA REPRODUCTION, LA DISTRIBUTION ET L'UTILISATION DE CE DOCUMENT OU DE SES DONNÉES MATHÉMATIQUES CAO, AINSI QUE LA COMMUNICATION DE TOUT CONTENU À AUTRUI, SANS AUTORISATION EXPRESSE EST INTERDITE.

	DATE
DR K.MANIRAJAN	15AP19
APVD1 L.R.SURESH	15AP19
APVD2 E.LAM	15AP19
APVD3 M.VENARD	15AP19
APVD4 J.FABRE	15AP19
APVD5	

SUBSTANCES OF CONCERN AND RECYCLED CONTENT PER APTIV 10949001 MATIERES PROSCRITES ET CONTENU RECYCLABLE SEION DELPHI 10949001

MATERIAL

DRAWING NAME 1W RCS800 DIRECT MATE FEMALE CONNECTOR 33098442-CUS03

DRAWING NUMBER 35098442

SIZE	SCALE	FRAME NO	SHEET NO	STG	REV	N/P
A1	1:1	1 OF 1	1 OF 1	R	01	

DIM TO CHECK	DIMENSIONAL RANGE (MM)	CHART	EL							
FROM	> 0	> 20	> 30	> 70	> 100	> 150	> 200	> 250	> 300	> 400
TO	> 20	30	70	100	150	200	250	300	400	
TOLERANCE UNLESS OTHERWISE SPECIFIED										
THEORETIC DIM	±0.15	±0.2	±0.3	±0.4	±0.5	±0.6	±0.8	±1	±1.2	
ANGULAR TOLERANCE ±2°										

DWG TYP CUSTOMER PART DRAWING

WEIGHT (GR) 38.5max

VOLUME (CM<sup>3</sup>)

ROUTING

UNLESS OTHERWISE SPECIFIED

GENERAL TOLERANCES ACCORDING TO: SEE CHART

GD&T ACCORDING TO:

REFERENCE

FIRST ANGLE PROJECTION

DO NOT SCALE

USE MATH DATA