

CXP-SS

~15° smooth spot beam optimized for CREE XP-E. Assembly with black holder.

SPECIFICATION:

Dimensions	21.6 x 21.6 mm
Height	13.2 mm
Fastening	tape
ROHS compliant	yes ⓘ

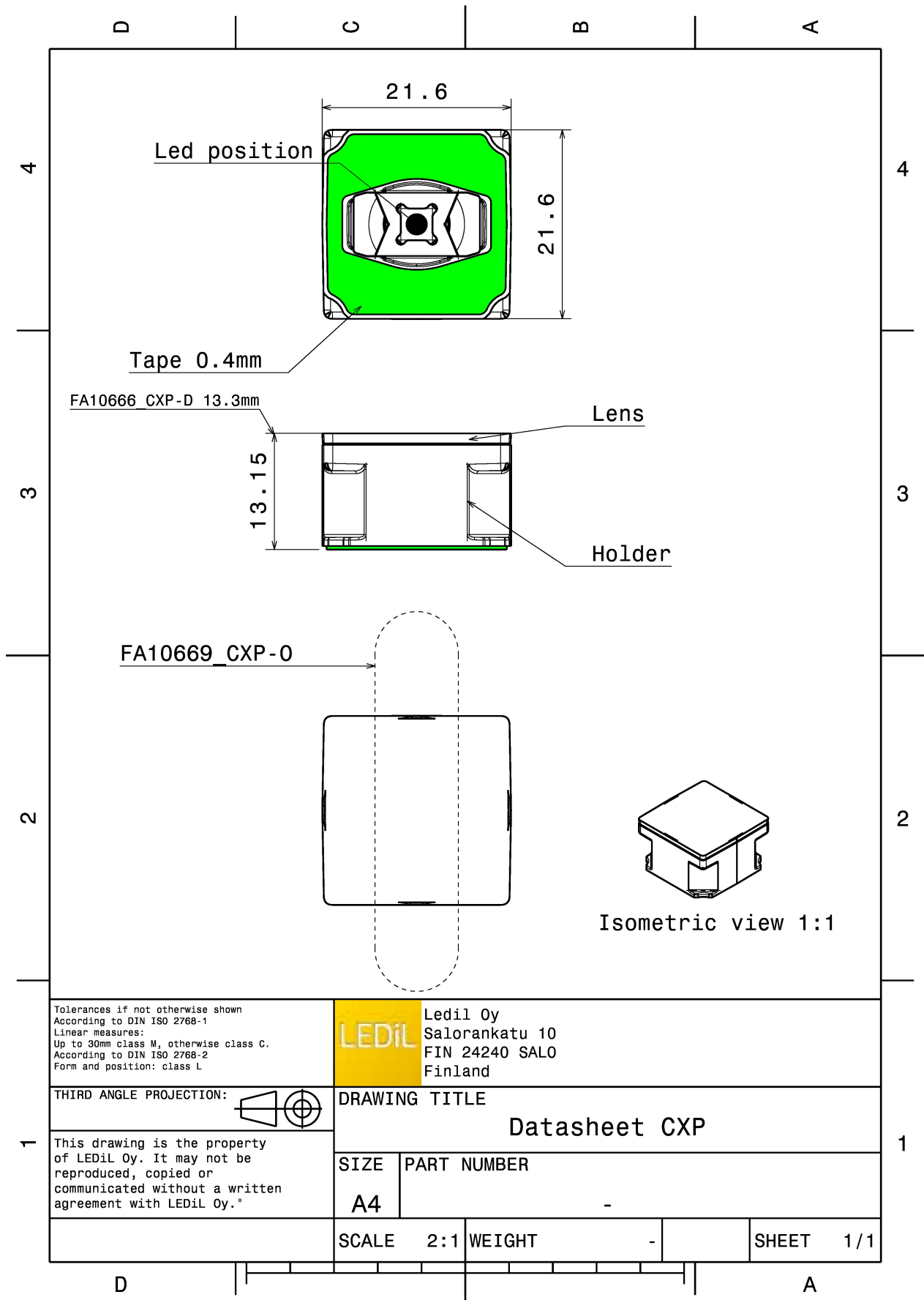


MATERIALS:

Component	Type	Material	Colour	Finish
ROSE-B-B-SS	Single lens	PC	clear	
ROSE-HLD-CXP-BLK	Holder	PC	black	
ROSE-TAPE	Tape	Acrylic foam	black	

ORDERING INFORMATION:

Component		Qty in box	MOQ	MPQ	Box weight (kg)
FA10667_CXP-SS	Single lens	2448	0	144	0.0
» Box size:					



Tolerances if not otherwise shown
According to DIN ISO 2768-1
Linear measures:
Up to 30mm class M, otherwise class C.
According to DIN ISO 2768-2
Form and position: class L

LEDiL Ledil Oy
Salorankatu 10
FIN 24240 SALO
Finland

THIRD ANGLE PROJECTION:

DRAWING TITLE
Datasheet CXP

This drawing is the property of LEDiL Oy. It may not be reproduced, copied or communicated without a written agreement with LEDiL Oy."

SIZE	PART NUMBER
A4	-

SCALE	2:1	WEIGHT	-	SHEET	1/1
-------	-----	--------	---	-------	-----

See also our general installation guide: www.ledil.com/installation_guide

OPTICAL RESULTS (MEASURED):



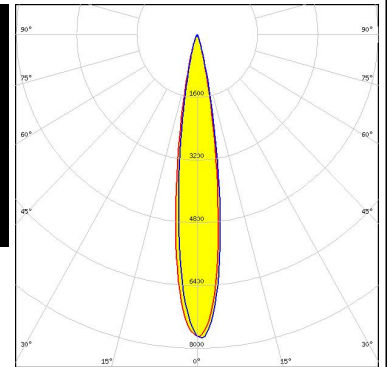
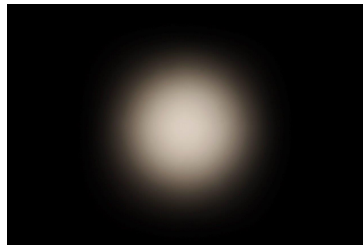
LED XP-E
 FWHM / FWTM 16.0° / 28.0°
 Efficiency 86 %
 Peak intensity 6.8 cd/lm
 LEDs/each optic 1
 Light colour White
 Required components:



LED XP-G
 FWHM / FWTM 13.0° / 27.0°
 Efficiency 85 %
 Peak intensity 9.8 cd/lm
 LEDs/each optic 1
 Light colour White
 Required components:



LED XP-L HD
 FWHM / FWTM 16.0° / 30.0°
 Efficiency 78 %
 Peak intensity 7.8 cd/lm
 LEDs/each optic 1
 Light colour White
 Required components:



SEOL SEMICONDUCTOR

LED Z5
 FWHM / FWTM 12.0°
 Efficiency 83 %
 LEDs/each optic 1
 Light colour White
 Required components:

OPTICAL RESULTS (SIMULATED):



LED	XP-G2
FWHM / FWTM	13.0° / 26.0°
Efficiency	87 %
Peak intensity	12.2 cd/lm
LEDs/each optic	1
Light colour	White
Required components:	

