

## SSS-O-90

~13° + 45° oval beam optimized for Seoul P4.  
Variant with beam direction rotated 90°.  
Assembly with black holder.

### TECHNICAL SPECIFICATIONS:

Dimensions	21.6 mm
Height	14.9 mm
Fastening	tape
ROHS compliant	yes ⓘ

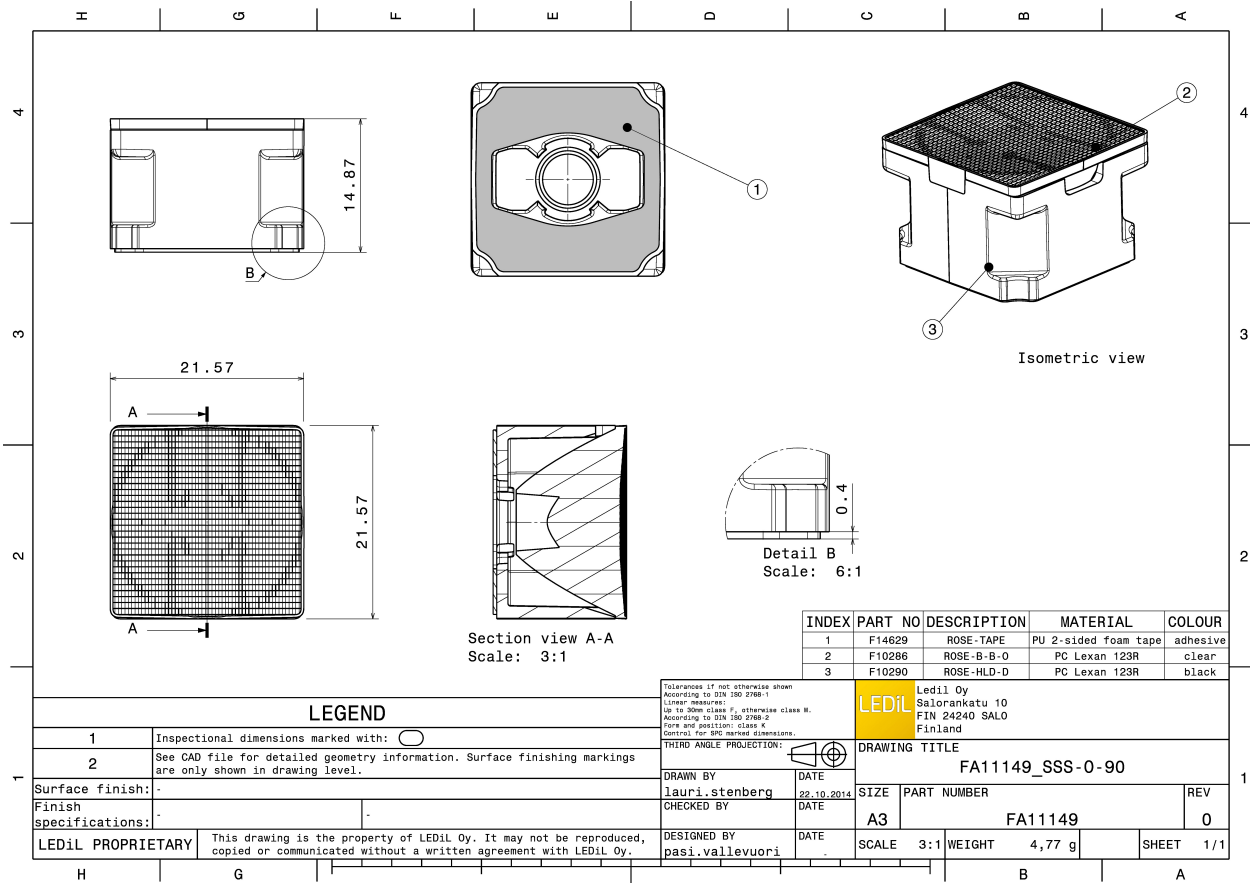
### MATERIAL SPECIFICATIONS:

Component	Type	Material	Colour	Finish
ROSE-B-B-O-90	Single lens	PC		
ROSE-HLD-D	Holder	PC		
ROSE-TAPE	Tape	PU tape		

### ORDERING INFORMATION:

Component		Qty in box	MOQ	MPQ	Box weight (kg)
4FA11149_SSS-O-90	Single lens	2160	288	144	0.0
» Box size: 470 x 235 x 270 mm					





## PHOTOMETRIC DATA (MEASURED):

