

TINA-D

~16° diffused spot beam optimized for LUXEON Rebel. Assembly with holder, installation tape and location pins.

SPECIFICATION:

Dimensions	Ø 16.1 mm
Height	9.4 mm
Fastening	tape, pin
ROHS compliant	yes ⓘ

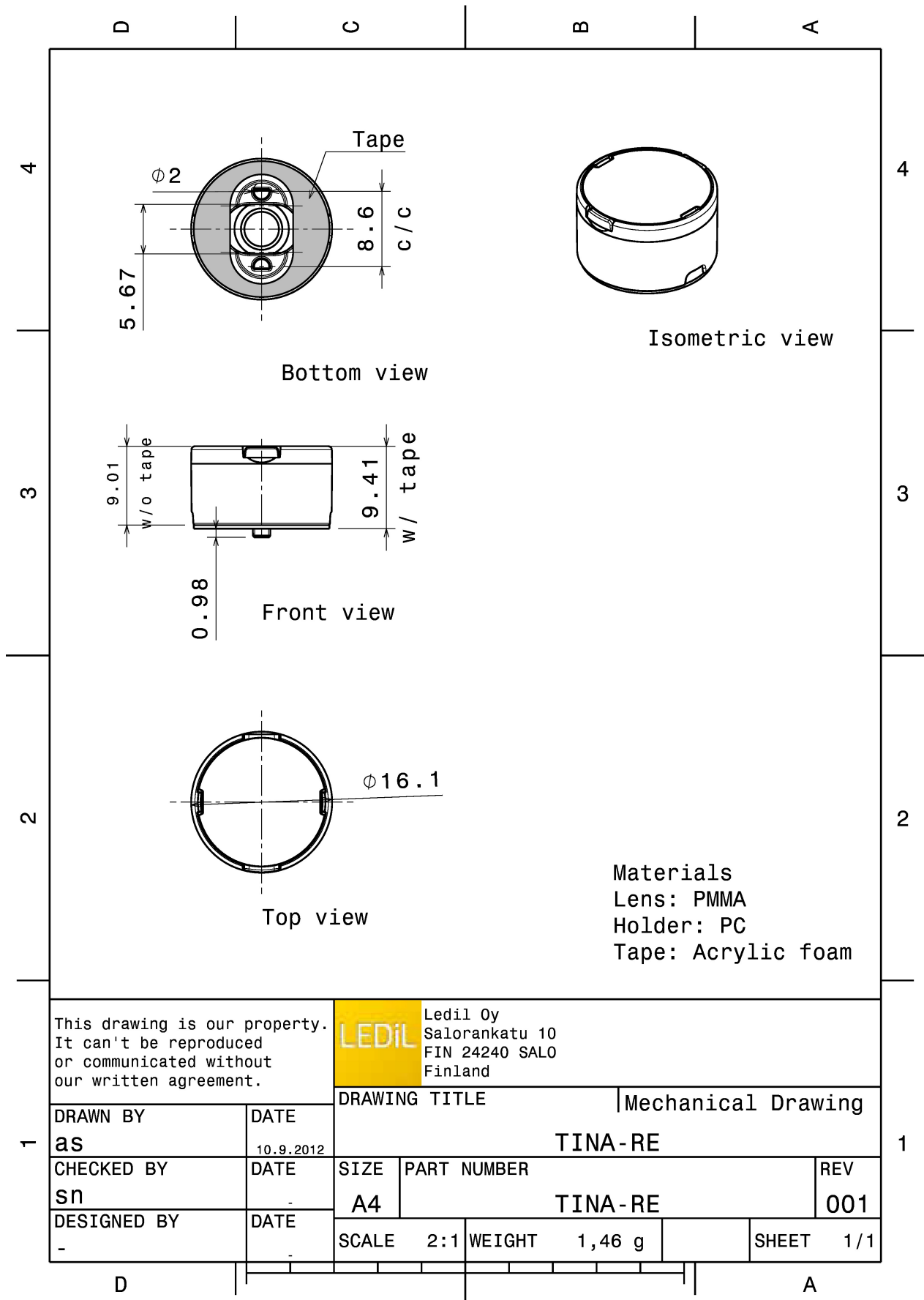


MATERIALS:

Component	Type	Material	Colour	Finish
TINA-D	Single lens	PMMA	clear	
TINA-H-TAPE-RE-BLK	Holder	PC	black	
TINA-TAPE3	Tape	Acrylic foam	black	

ORDERING INFORMATION:

Component		Qty in box	MOQ	MPQ	Box weight (kg)
FA11209_TINA-D	Single lens	2016	288	144	4.0
» Box size:					



This drawing is our property. It can't be reproduced or communicated without our written agreement.

LEDiL Ledil Oy
 Salorankatu 10
 FIN 24240 SALO
 Finland

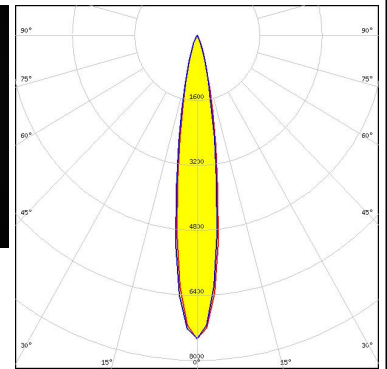
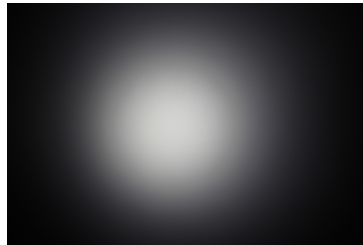
DRAWN BY as		DATE 10.9.2012	DRAWING TITLE Mechanical Drawing		
CHECKED BY sn		DATE -	SIZE A4	PART NUMBER TINA-RE	REV 001
DESIGNED BY -		DATE -	SCALE 2:1	WEIGHT 1,46 g	SHEET 1/1

See also our general installation guide: www.ledil.com/installation_guide

OPTICAL RESULTS (MEASURED):



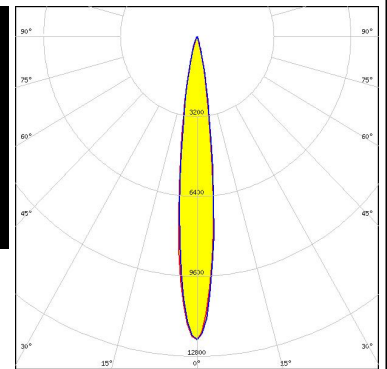
LED XB-H
 FWHM / FWTM 17.0° / 35.0°
 Efficiency 87 %
 Peak intensity 7.5 cd/lm
 LEDs/each optic 1
 Light colour White
 Required components:



LED LUXEON Rebel
 FWHM / FWTM 15.0° / 34.0°
 Efficiency 92 %
 Peak intensity 5.5 cd/lm
 LEDs/each optic 1
 Light colour White
 Required components:



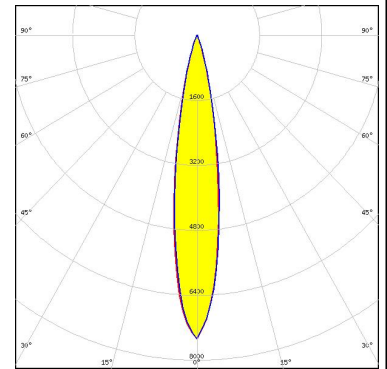
LED LUXEON Z ES
 FWHM / FWTM 14.0° / 28.0°
 Efficiency 89 %
 Peak intensity 12 cd/lm
 LEDs/each optic 1
 Light colour White
 Required components:



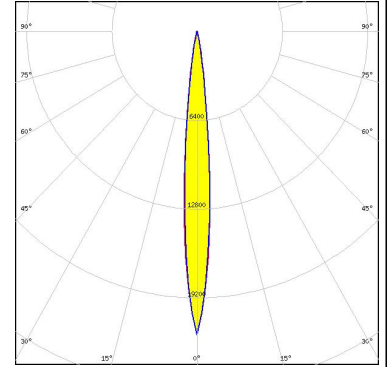
OPTICAL RESULTS (SIMULATED):



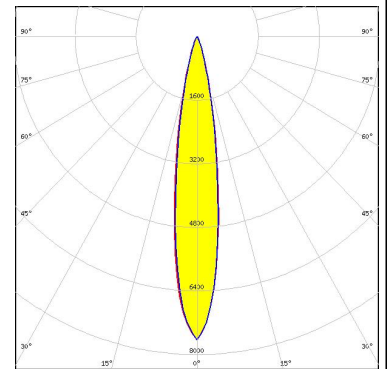
LED XB-D
FWHM / FWTM 18.0° / 34.0°
Efficiency 89 %
Peak intensity 7.5 cd/lm
LEDs/each optic 1
Light colour White
Required components:



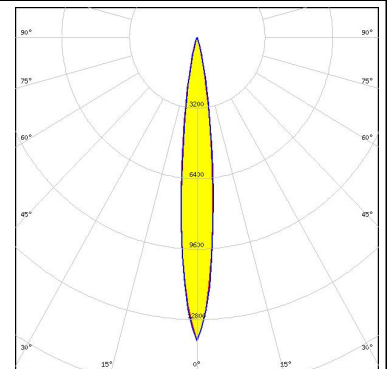
LED LUXEON HL1Z
FWHM / FWTM 10.0° / 20.0°
Efficiency 90 %
Peak intensity 21.9 cd/lm
LEDs/each optic 1
Light colour White
Required components:



LED Duris E 2835
FWHM / FWTM 17.0° / 34.0°
Efficiency 92 %
Peak intensity 7.6 cd/lm
LEDs/each optic 1
Light colour White
Required components:



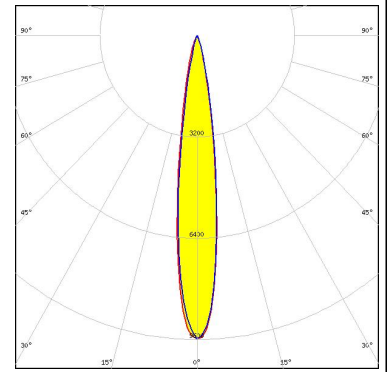
LED OSLOM Signal
FWHM / FWTM 12.0° / 26.0°
Efficiency 92 %
Peak intensity 13.8 cd/lm
LEDs/each optic 1
Light colour Blue
Required components:



OPTICAL RESULTS (SIMULATED):

OSRAM Opto Semiconductors

LED OSLON Square CSSRM2/CSSRM3
FWHM / FWTM 15.0° / 30.0°
Efficiency 92 %
Peak intensity 9.6 cd/lm
LEDs/each optic 1
Light colour White
Required components:



OSRAM Opto Semiconductors

LED OSLON SSL 80
FWHM / FWTM 12.0° / 30.0°
Efficiency 90 %
Peak intensity 10.6 cd/lm
LEDs/each optic 1
Light colour Far Red
Required components:

