

## TINA-W

~50° wide beam optimized for LUXEON Rebel.  
Assembly with holder, installation tape and  
location pins.

### SPECIFICATION:

Dimensions	Ø 16.1 mm
Height	9.4 mm
Fastening	tape, pin
ROHS compliant	yes ⓘ

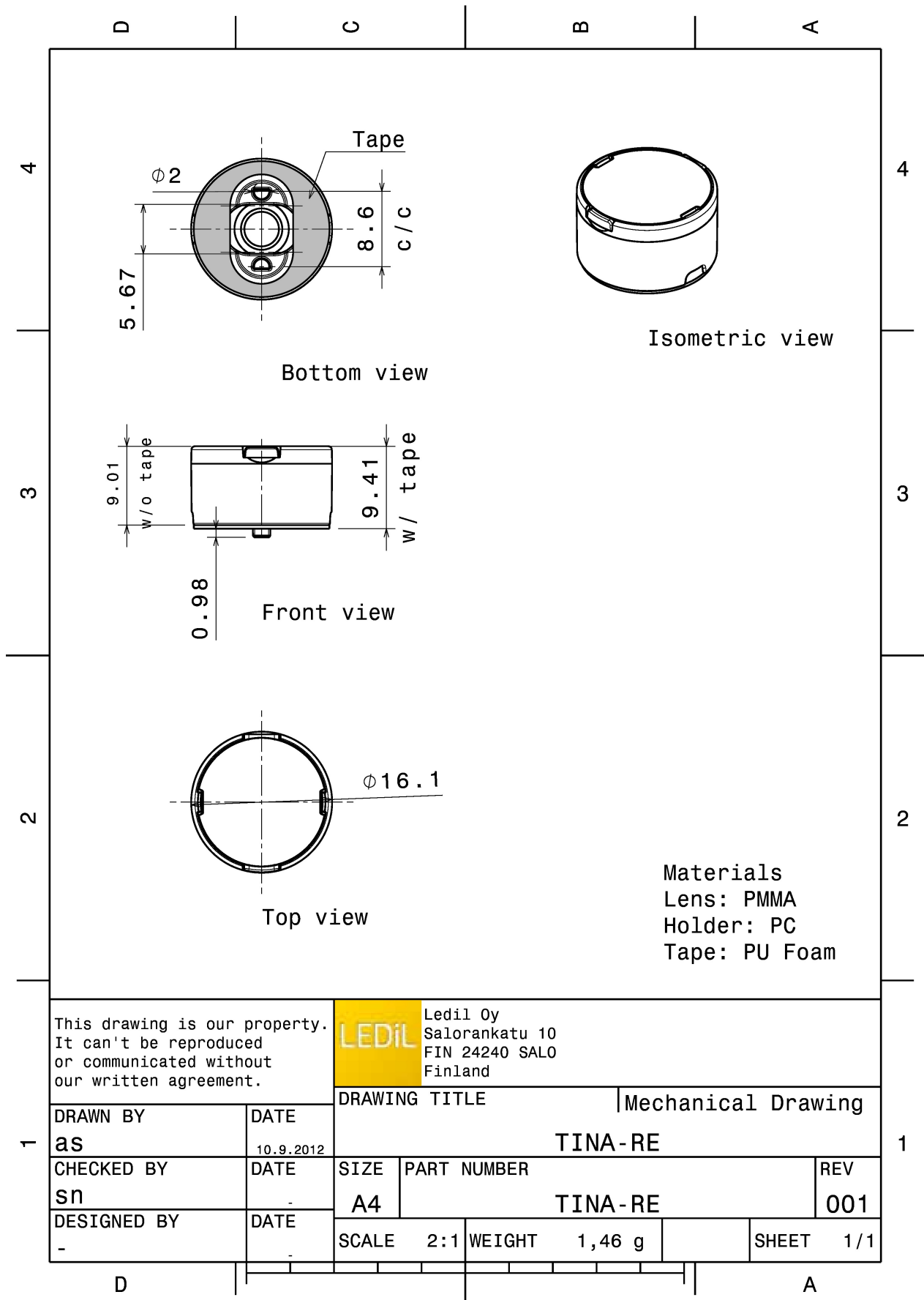


### MATERIALS:

Component	Type	Material	Colour	Finish
TINA-XP-W	Single lens	PMMA	clear	
TINA-H-TAPE-RE-BLK	Holder	PC	black	
TINA-TAPE3	Tape	Acrylic foam	black	

### ORDERING INFORMATION:

Component		Qty in box	MOQ	MPQ	Box weight (kg)
FA11211_TINA-W	Single lens	2016	288	144	4.1
» Box size:					



This drawing is our property. It can't be reproduced or communicated without our written agreement.

**LEDiL** LediL Oy  
 Salorankatu 10  
 FIN 24240 SALO  
 Finland

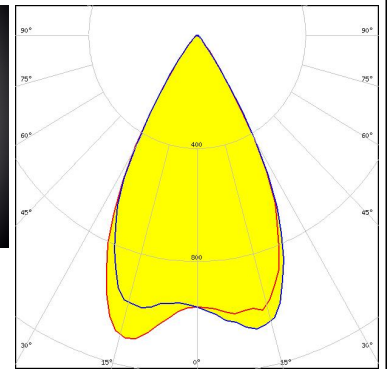
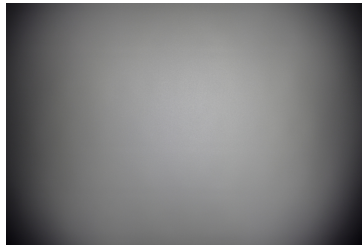
DRAWN BY <b>as</b>		DATE 10.9.2012	DRAWING TITLE <b>TINA-RE</b>		Mechanical Drawing
CHECKED BY <b>sn</b>	DATE -	SIZE <b>A4</b>	PART NUMBER <b>TINA-RE</b>	REV <b>001</b>	
DESIGNED BY -	DATE -	SCALE <b>2:1</b>	WEIGHT <b>1,46 g</b>	SHEET <b>1/1</b>	

See also our general installation guide: [www.ledil.com/installation\\_guide](http://www.ledil.com/installation_guide)

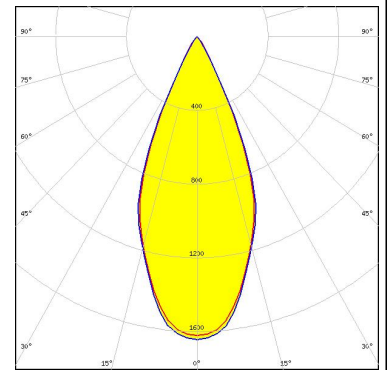
### OPTICAL RESULTS (MEASURED):



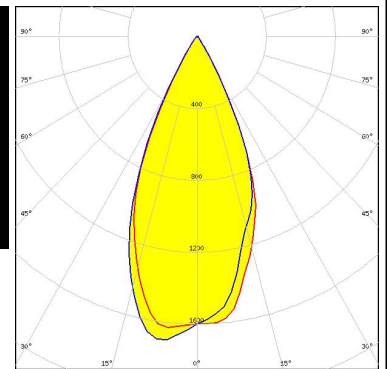
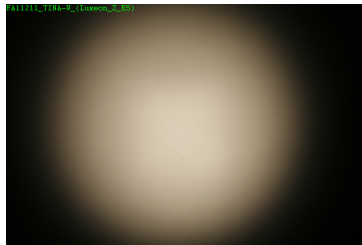
LED XB-H  
 FWHM / FWTM 56.0° / 75.0°  
 Efficiency 89 %  
 Peak intensity 1 cd/lm  
 LEDs/each optic 1  
 Light colour White  
 Required components:



LED LUXEON Rebel  
 FWHM / FWTM 44.0° / 61.0°  
 Efficiency 88 %  
 Peak intensity 1.6 cd/lm  
 LEDs/each optic 1  
 Light colour White  
 Required components:



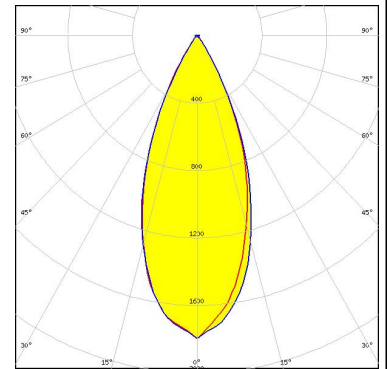
LED LUXEON Z ES  
 FWHM / FWTM 46.0° / 66.0°  
 Efficiency 90 %  
 Peak intensity 1.7 cd/lm  
 LEDs/each optic 1  
 Light colour White  
 Required components:



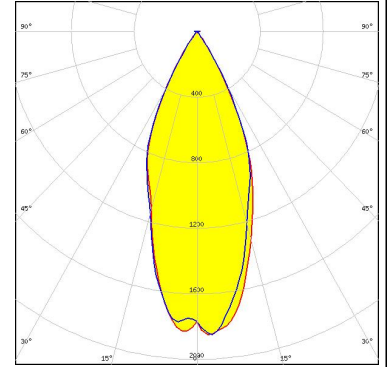
### OPTICAL RESULTS (SIMULATED):



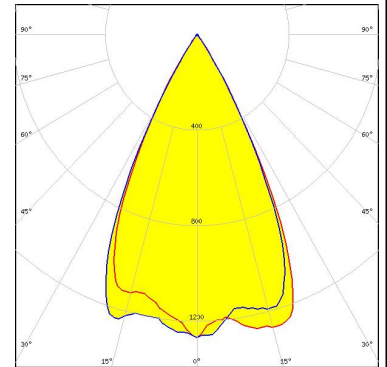
LED XB-D  
 FWHM / FWTM 42.0° / 66.0°  
 Efficiency 90 %  
 Peak intensity 1.8 cd/lm  
 LEDs/each optic 1  
 Light colour White  
 Required components:



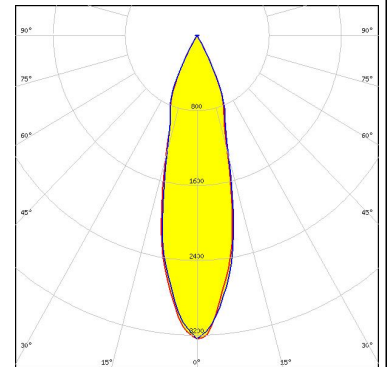
LED XQ-E HI  
 FWHM / FWTM 42.0° / 67.0°  
 Efficiency 92 %  
 Peak intensity 1.9 cd/lm  
 LEDs/each optic 1  
 Light colour White  
 Required components:



LED LUXEON H50-2  
 FWHM / FWTM 52.0° / 66.0°  
 Efficiency 92 %  
 Peak intensity 1.3 cd/lm  
 LEDs/each optic 1  
 Light colour White  
 Required components:



LED LUXEON HL1Z  
 FWHM / FWTM 26.0 + 27.0° / 56.0°  
 Efficiency 92 %  
 Peak intensity 3.2 cd/lm  
 LEDs/each optic 1  
 Light colour White  
 Required components:



### OPTICAL RESULTS (SIMULATED):



LED	LUXEON HL2Z
FWHM / FWTM	36.0° / 60.0°
Efficiency	93 %
Peak intensity	2.3 cd/lm
LEDs/each optic	1
Light colour	White
Required components:	

