

## LM1-W

~40° wide beam optimized for CREE MC-E. 14.04 mm high assembly with installation tape.

### SPECIFICATION:

Dimensions	Ø 21.6 mm
Height	14 mm
Fastening	tape
ROHS compliant	yes ⓘ

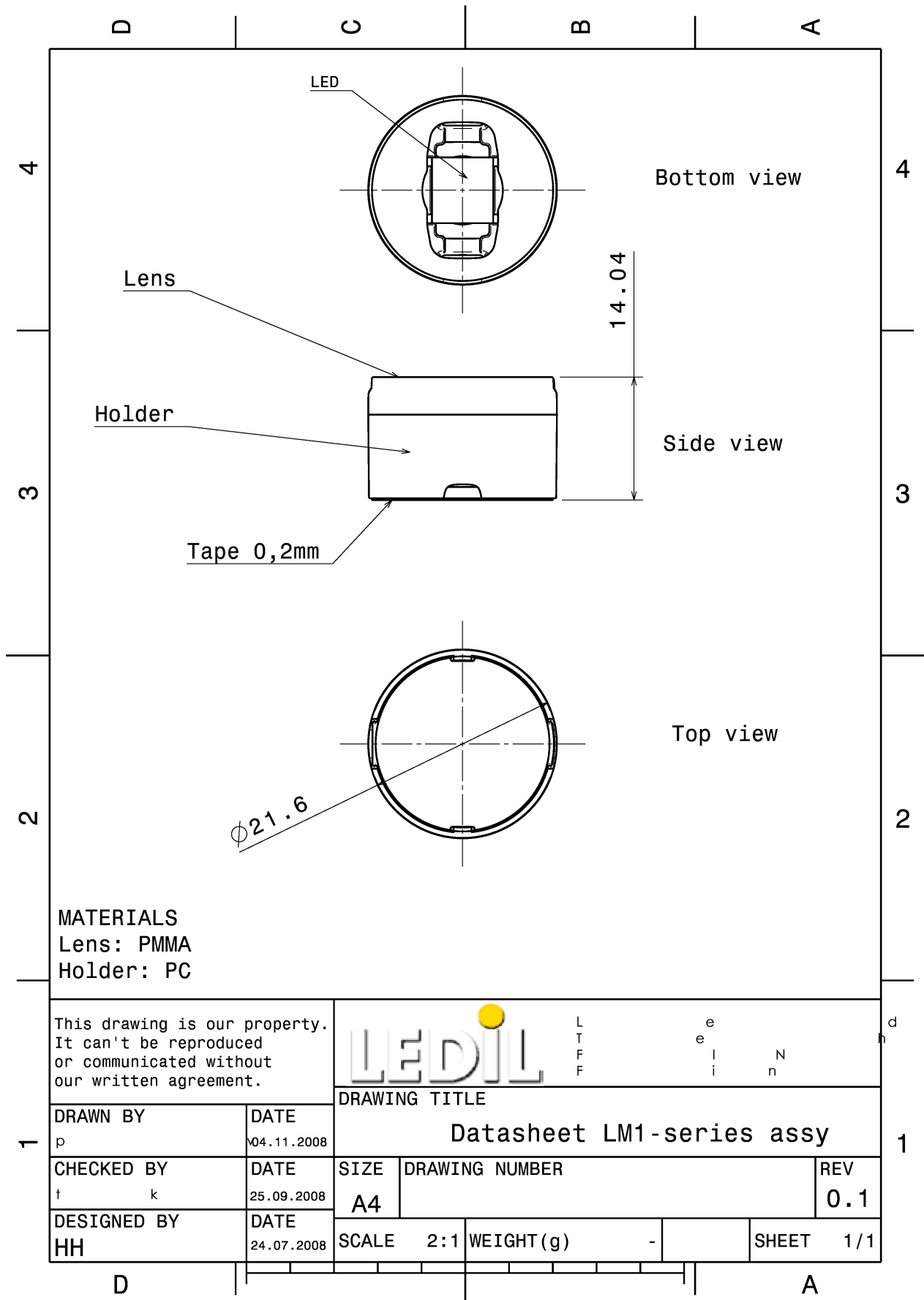


### MATERIALS:

Component	Type	Material	Colour	Finish
LM1-W	Single lens	PMMA	clear	
LM-LH1-TAPE-BLK	Holder	PC	black	
LEILA-TAPE	Tape	PET tape 0,2mm	black	

### ORDERING INFORMATION:

Component		Qty in box	MOQ	MPQ	Box weight (kg)
FA11894_LM1-W	Single lens	2304		144	0.0
» Box size:					

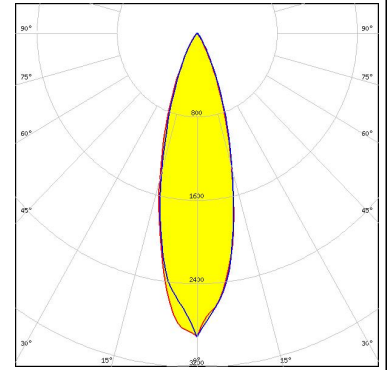


See also our general installation guide: [www.ledil.com/installation\\_guide](http://www.ledil.com/installation_guide)

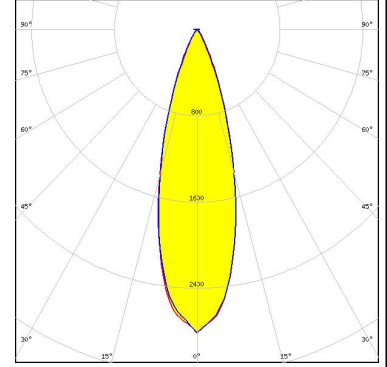
### OPTICAL RESULTS (SIMULATED):



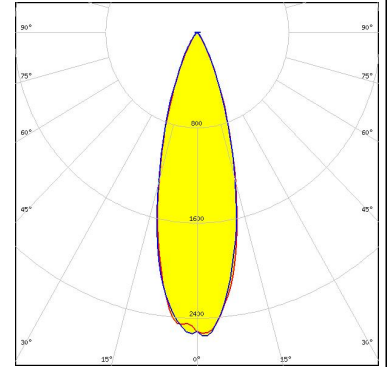
LED MC-E  
 FWHM / FWTM 29.0° / 56.0°  
 Efficiency 91 %  
 Peak intensity 2.9 cd/lm  
 LEDs/each optic 1  
 Light colour White  
 Required components:



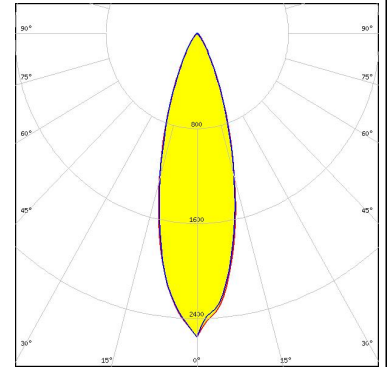
LED XP-G3  
 FWHM / FWTM 30.0° / 53.0°  
 Efficiency 86 %  
 Peak intensity 2.8 cd/lm  
 LEDs/each optic 1  
 Light colour White  
 Required components:



LED XP-L2  
 FWHM / FWTM 30.0° / 56.0°  
 Efficiency 85 %  
 Peak intensity 2.6 cd/lm  
 LEDs/each optic 1  
 Light colour White  
 Required components:



LED LUXEON 5050 Square LES  
 FWHM / FWTM 30.0° / 58.0°  
 Efficiency 86 %  
 Peak intensity 2.6 cd/lm  
 LEDs/each optic 1  
 Light colour White  
 Required components:



### OPTICAL RESULTS (SIMULATED):

