

CXM-M

~30° medium beam optimized for CREE XM-L.
Assembly with white holder.

SPECIFICATION:

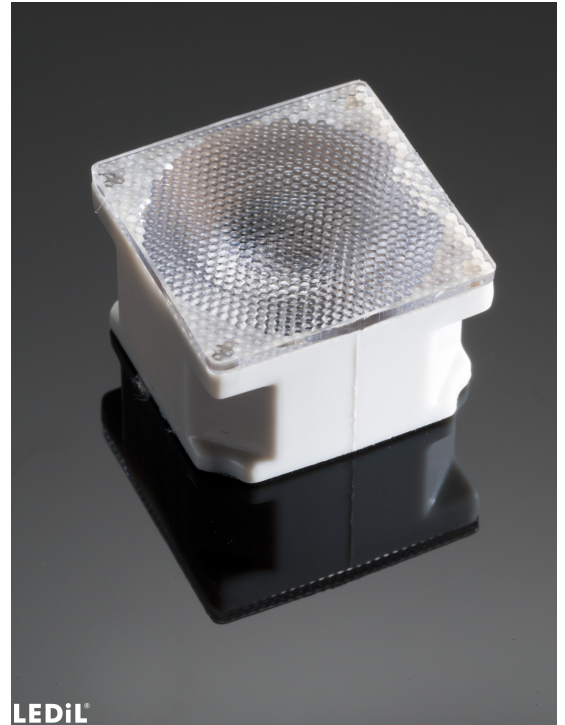
| | |
|----------------|----------------|
| Dimensions | 21.6 x 21.6 mm |
| Height | 12.9 mm |
| Fastening | tape |
| ROHS compliant | yes ⓘ |

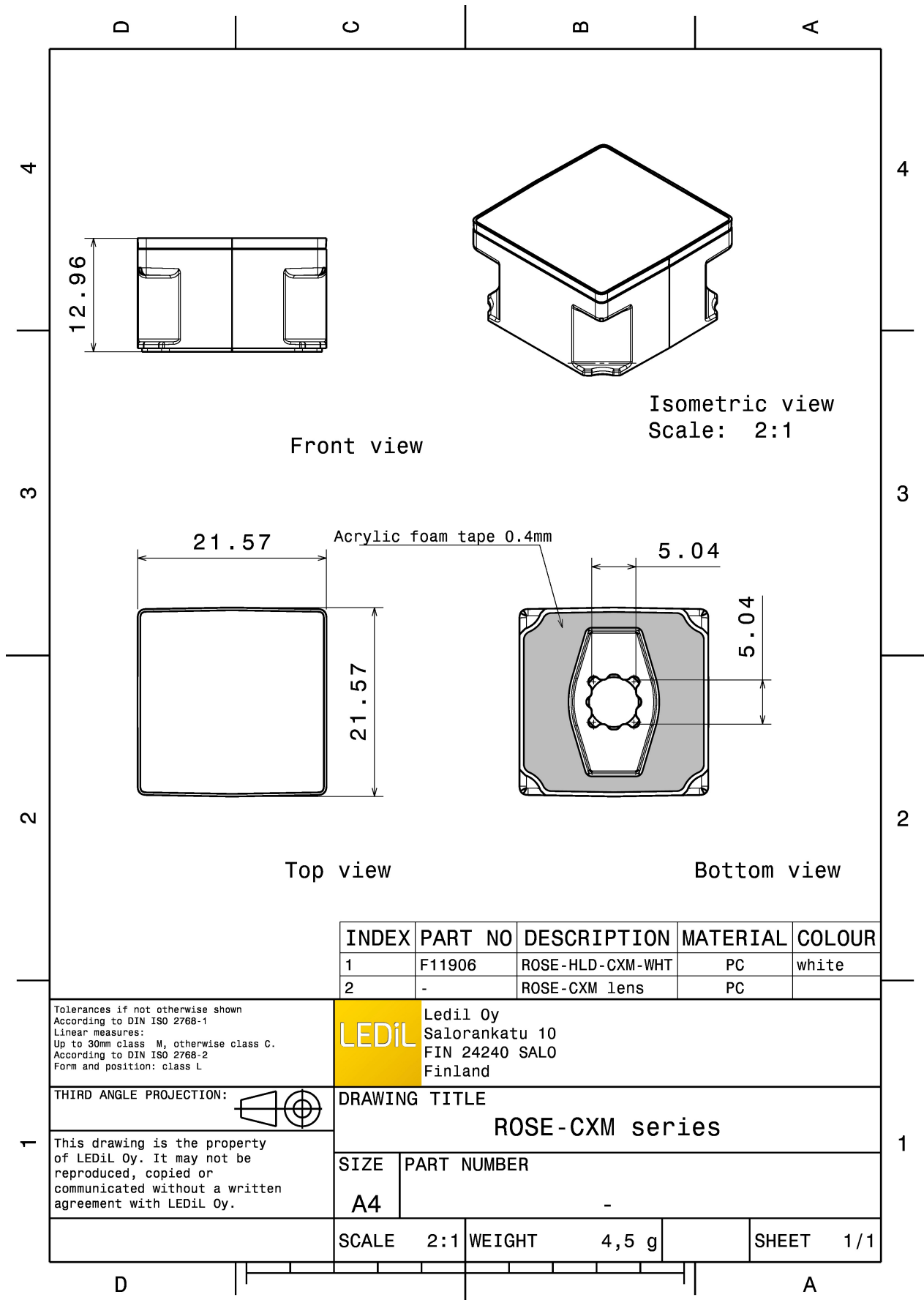
MATERIALS:

| Component | Type | Material | Colour | Finish |
|------------------|-------------|--------------|--------|--------|
| ROSE-CMC-M | Single lens | PC | clear | |
| ROSE-HLD-CXM-WHT | Holder | PC | white | |
| ROSE-TAPE | Tape | Acrylic foam | black | |

ORDERING INFORMATION:

| Component | | Qty in box | MOQ | MPQ | Box weight (kg) |
|---------------|-------------|------------|-----|-----|-----------------|
| FA11911_CXM-M | Single lens | 2304 | 288 | 144 | 11.3 |
| » Box size: | | | | | |





| INDEX | PART NO | DESCRIPTION | MATERIAL | COLOUR |
|-------|---------|------------------|----------|--------|
| 1 | F11906 | ROSE-HLD-CXM-WHT | PC | white |
| 2 | - | ROSE-CXM lens | PC | |

Tolerances if not otherwise shown
According to DIN ISO 2768-1
Linear measures:
Up to 30mm class M, otherwise class C.
According to DIN ISO 2768-2
Form and position: class L

LEDiL Ledil Oy
Salorankatu 10
FIN 24240 SALO
Finland

THIRD ANGLE PROJECTION:

DRAWING TITLE
ROSE-CXM series

This drawing is the property of LEDiL Oy. It may not be reproduced, copied or communicated without a written agreement with LEDiL Oy.

| SIZE | PART NUMBER |
|------|-------------|
| A4 | - |

| SCALE | 2:1 | WEIGHT | 4,5 g | SHEET | 1/1 |
|-------|-----|--------|-------|-------|-----|
|-------|-----|--------|-------|-------|-----|

See also our general installation guide: www.ledil.com/installation_guide

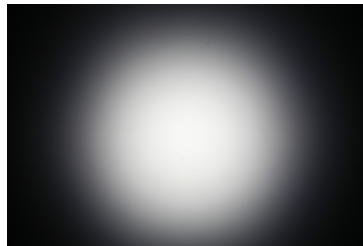
OPTICAL RESULTS (MEASURED):



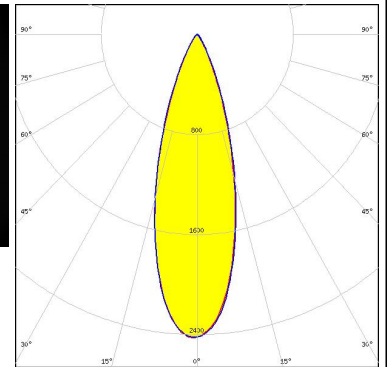
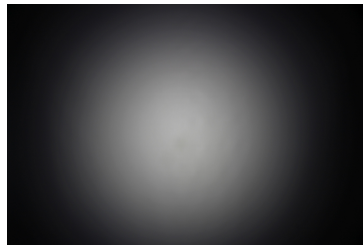
LED XM-L
FWHM / FWTM 32.0°
Efficiency 82 %
LEDs/each optic 1
Light colour White
Required components:



LED XM-L2
FWHM / FWTM 32.0° / 57.0°
Efficiency 82 %
LEDs/each optic 1
Light colour White
Required components:



LED XM-L3
FWHM / FWTM 31.0° / 56.0°
Efficiency 85 %
Peak intensity 2.4 cd/lm
LEDs/each optic 1
Light colour White
Required components:



OPTICAL RESULTS (SIMULATED):



| | |
|----------------------|---------------|
| LED | XP-L2 |
| FWHM / FWTM | 26.0° / 50.0° |
| Efficiency | 80 % |
| Peak intensity | 3.1 cd/lm |
| LEDs/each optic | 1 |
| Light colour | White |
| Required components: | |

