

LXM-RS

~9.6° spot beam optimized for CREE XM-L. 14.8 mm high assembly with installation tape.

SPECIFICATION:

Dimensions	Ø 21.6 mm
Height	14.8 mm
Fastening	tape
ROHS compliant	yes ⓘ

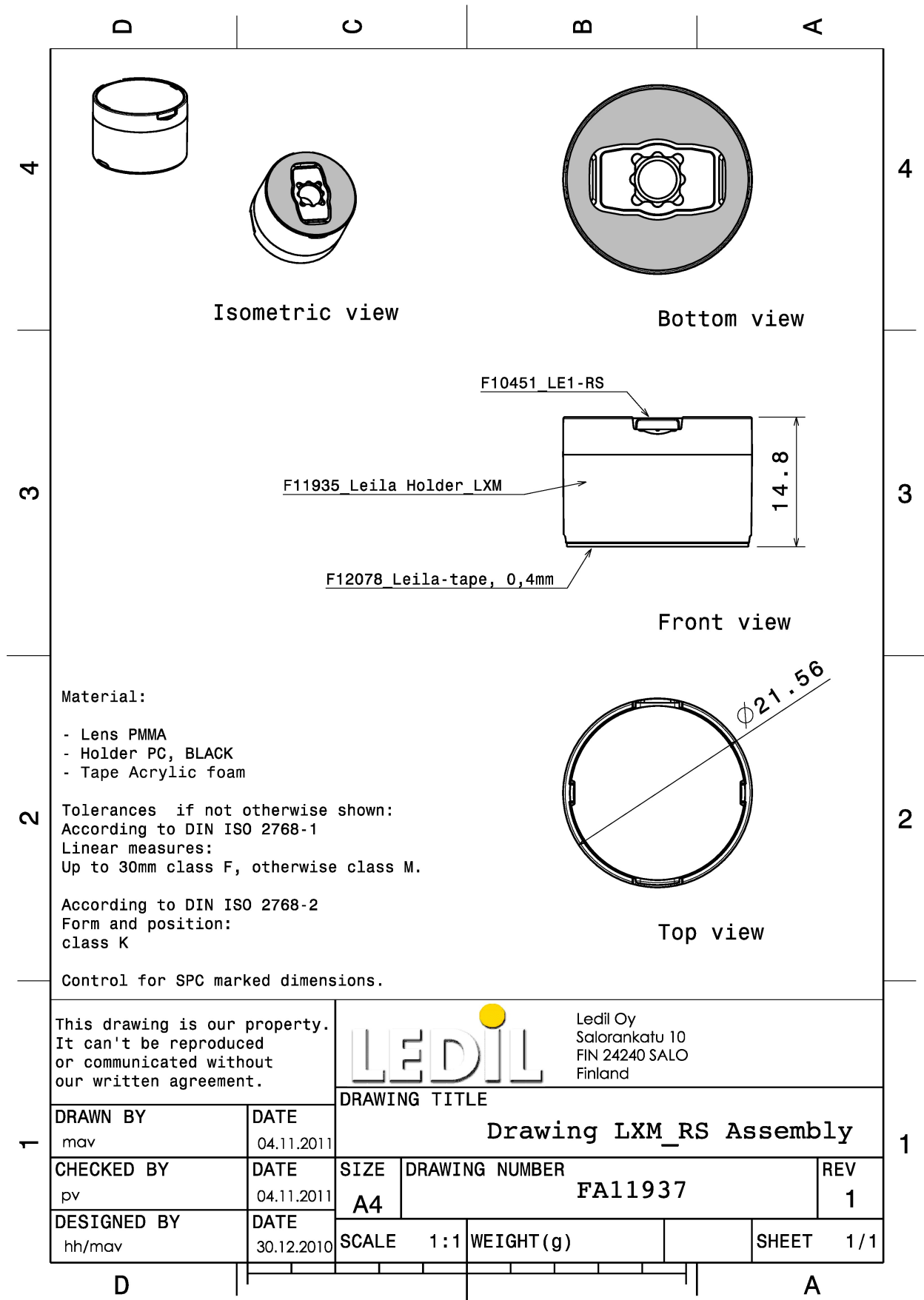


MATERIALS:

Component	Type	Material	Colour	Finish
LE1-RS	Single lens	PMMA	clear	
LXM-LH1-TAPE-BLK	Holder	PC	black	
LEILA-TAPE	Tape	Acrylic foam	black	

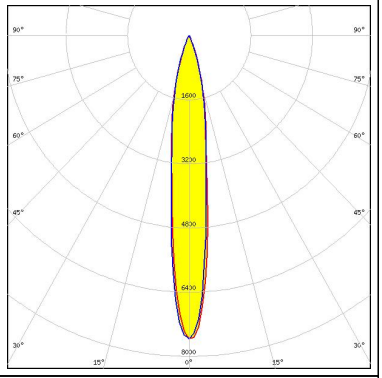

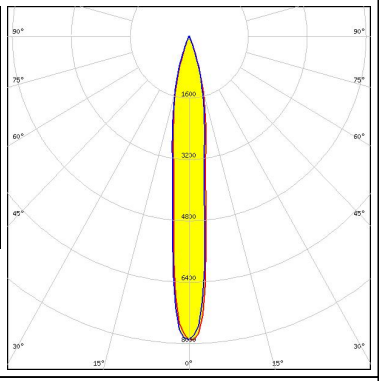

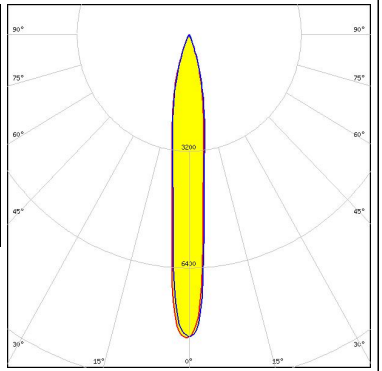
ORDERING INFORMATION:

Component		Qty in box	MOQ	MPQ	Box weight (kg)
FA11937_LXM-RS	Single lens	2304	288	144	11.7
» Box size:					



See also our general installation guide: www.ledil.com/installation_guide

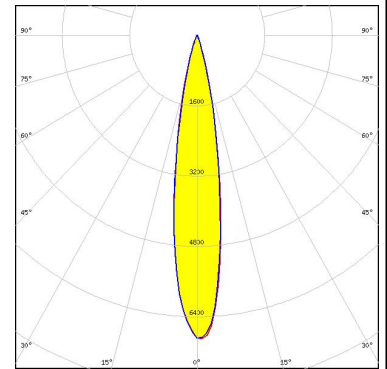
OPTICAL RESULTS (MEASURED):

<p>CREE LEDs</p> <p>LED XM-L FWHM / FWTM 14.0° / 38.0° Efficiency 94 % Peak intensity 7.6 cd/lm LEDs/each optic 1 Light colour White Required components:</p>		
<p>CREE LEDs</p> <p>LED XM-L2 FWHM / FWTM 13.0° / 37.0° Efficiency 93 % Peak intensity 7.9 cd/lm LEDs/each optic 1 Light colour White Required components:</p>		
<p>CREE LEDs</p> <p>LED XM-L3 FWHM / FWTM 12.0° / 37.0° Efficiency 93 % Peak intensity 8.3 cd/lm LEDs/each optic 1 Light colour White Required components:</p>		

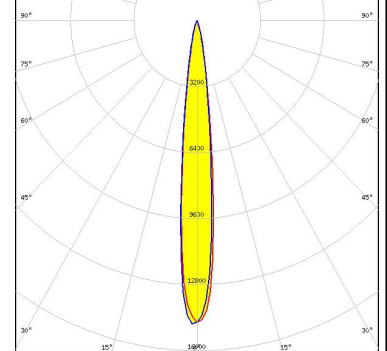
OPTICAL RESULTS (SIMULATED):



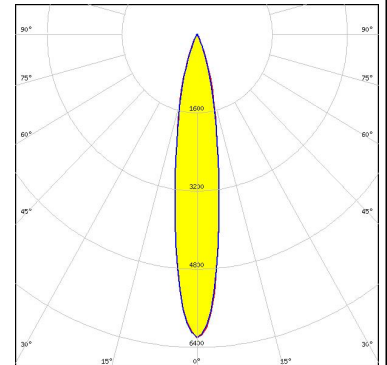
LED XQ-E HD
FWHM / FWTM 18.0° / 34.0°
Efficiency 92 %
Peak intensity 7 cd/lm
LEDs/each optic 4
Light colour White
Required components:



LED LUXEON CZ
FWHM / FWTM 12.0° / 25.0°
Efficiency 94 %
Peak intensity 14.9 cd/lm
LEDs/each optic 1
Light colour Red
Required components:



LED SST-70X-WCS
FWHM / FWTM 18.0° / 40.0°
Efficiency 93 %
Peak intensity 6.2 cd/lm
LEDs/each optic 1
Light colour White
Required components:



LED SFH 4725AS
FWHM / FWTM 8.0° / 18.0°
Efficiency 94 %
LEDs/each optic 1
Light colour IR
Required components:

