

## ROSE-MRK-BW

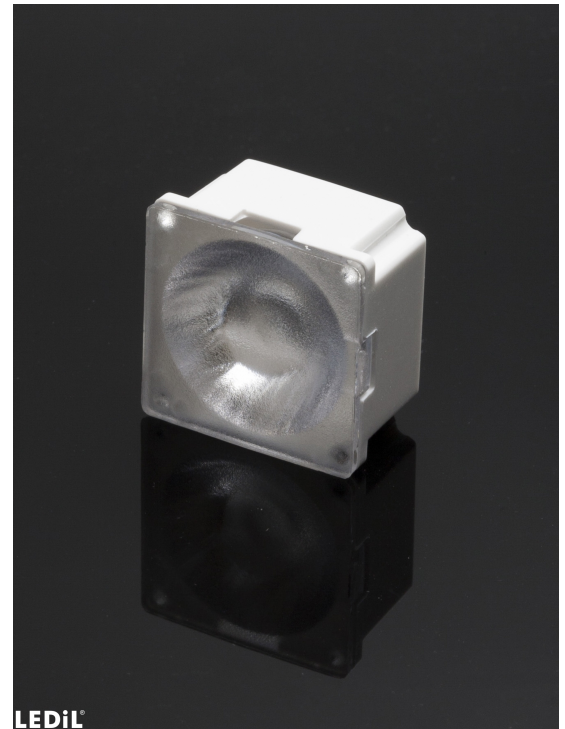
~70° batwing beam. Assembly with white holder.

### SPECIFICATION:

|                |                |
|----------------|----------------|
| Dimensions     | 21.6 x 21.6 mm |
| Height         | 13 mm          |
| Fastening      | tape, pin      |
| ROHS compliant | yes ⓘ          |

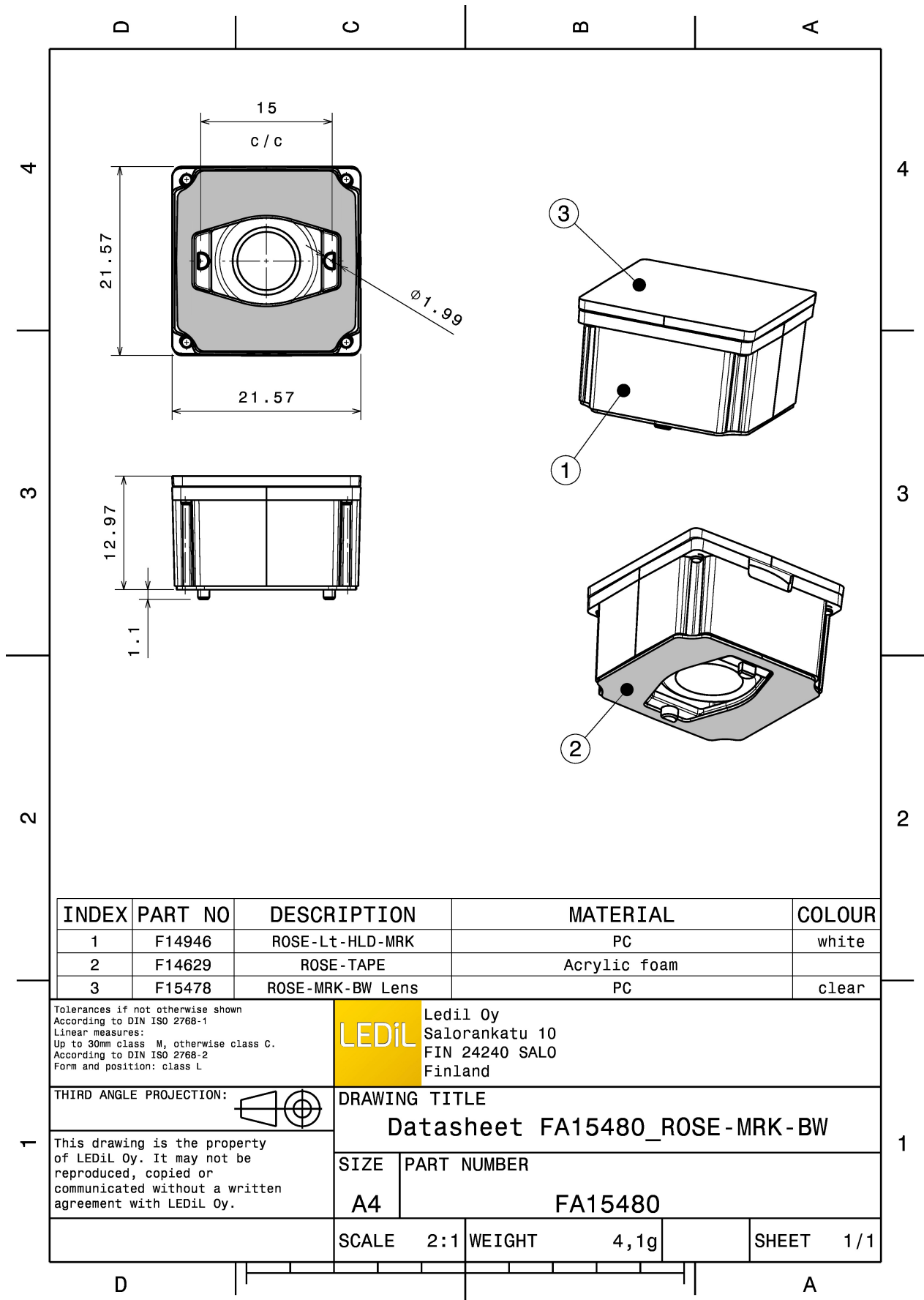
### MATERIALS:

| Component       | Type        | Material     | Colour | Finish |
|-----------------|-------------|--------------|--------|--------|
| ROSE-MRK-BW     | Single lens | PC           | clear  |        |
| ROSE-MRK-LT-HLD | Holder      | PC           | white  |        |
| ROSE-TAPE       | Tape        | Acrylic foam | black  |        |



### ORDERING INFORMATION:

| Component                      | Type        | Qty in box | MOQ | MPQ | Box weight (kg) |
|--------------------------------|-------------|------------|-----|-----|-----------------|
| FA15480_ROSE-MRK-BW            | Single lens | 2304       |     | 144 | 10.0            |
| » Box size: 470 x 235 x 270 mm |             |            |     |     |                 |



| INDEX | PART NO | DESCRIPTION      | MATERIAL     | COLOUR |
|-------|---------|------------------|--------------|--------|
| 1     | F14946  | ROSE-Lt-HLD-MRK  | PC           | white  |
| 2     | F14629  | ROSE-TAPE        | Acrylic foam |        |
| 3     | F15478  | ROSE-MRK-BW Lens | PC           | clear  |

Tolerances if not otherwise shown  
According to DIN ISO 2768-1  
Linear measures:  
Up to 30mm class M, otherwise class C.  
According to DIN ISO 2768-2  
Form and position: class L



Ledil Oy  
Salorankatu 10  
FIN 24240 SALO  
Finland

THIRD ANGLE PROJECTION:

DRAWING TITLE  
**Datasheet FA15480\_ROSE-MRK-BW**

This drawing is the property of LEDiL Oy. It may not be reproduced, copied or communicated without a written agreement with LEDiL Oy.

| SIZE | PART NUMBER |
|------|-------------|
| A4   | FA15480     |

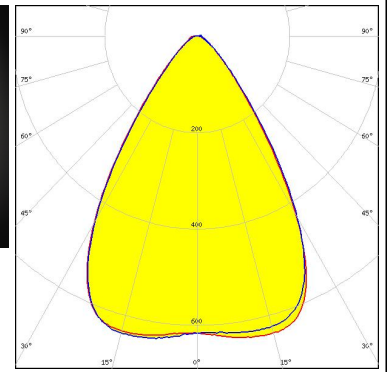
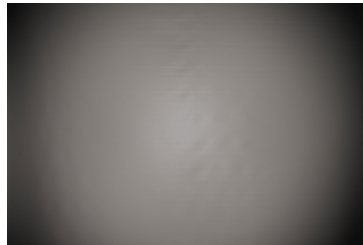
| SCALE | 2:1 | WEIGHT | 4,1g | SHEET | 1/1 |
|-------|-----|--------|------|-------|-----|
|-------|-----|--------|------|-------|-----|

See also our general installation guide: [www.ledil.com/installation\\_guide](http://www.ledil.com/installation_guide)



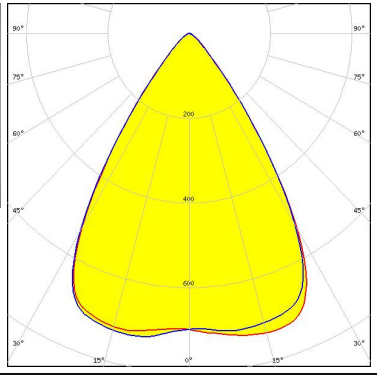


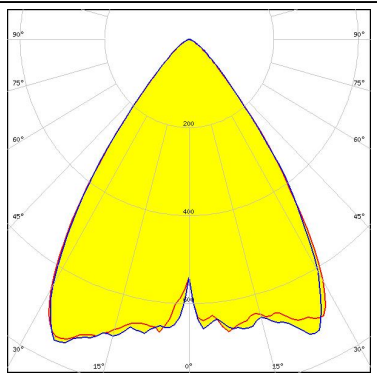

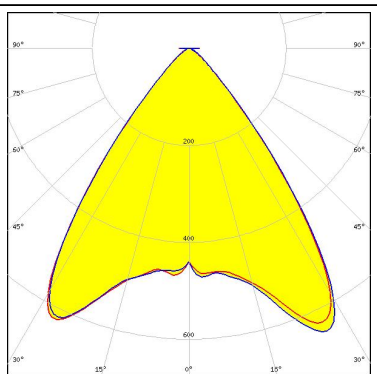
#### OPTICAL RESULTS (MEASURED):



|                      |                |
|----------------------|----------------|
| LED                  | LUXEON M/MX    |
| FWHM / FWTM          | 68.0° / 101.0° |
| Efficiency           | 84 %           |
| Peak intensity       | 0.7 cd/lm      |
| LEDs/each optic      | 1              |
| Light colour         | White          |
| Required components: |                |



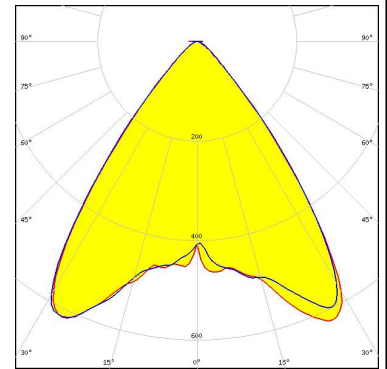
#### OPTICAL RESULTS (SIMULATED):

|  |  |   |
|--|--|---|
| <p></p> <p>LED: Bridgelux SMD 5050<br/>           FWHM / FWTM: 62.0° / 86.0°<br/>           Efficiency: 87 %<br/>           Peak intensity: 0.8 cd/lm<br/>           LEDs/each optic: 1<br/>           Light colour: White<br/>           Required components:</p> |  |    |
| <p></p> <p>LED: MK-R<br/>           FWHM / FWTM: 63.0° / 90.0°<br/>           Efficiency: 85 %<br/>           Peak intensity: 0.7 cd/lm<br/>           LEDs/each optic: 1<br/>           Light colour: White<br/>           Required components:</p>               |  |   |
| <p></p> <p>LED: XHP50<br/>           FWHM / FWTM: 63.0° / 90.0°<br/>           Efficiency: 84 %<br/>           Peak intensity: 0.7 cd/lm<br/>           LEDs/each optic: 1<br/>           Light colour: White<br/>           Required components:</p>            |  |  |
| <p></p> <p>LED: XP-G3<br/>           FWHM / FWTM: 74.0° / 95.0°<br/>           Efficiency: 84 %<br/>           Peak intensity: 0.6 cd/lm<br/>           LEDs/each optic: 1<br/>           Light colour: White<br/>           Required components:</p>            |  |  |

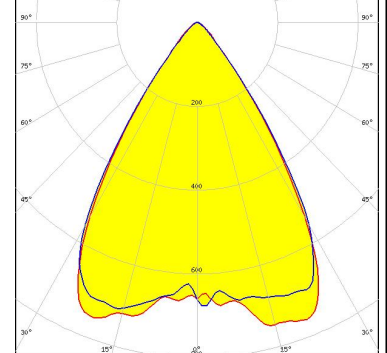
#### OPTICAL RESULTS (SIMULATED):



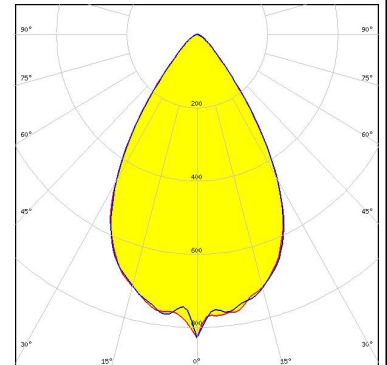
LED XP-L2  
 FWHM / FWTM 74.0° / 96.0°  
 Efficiency 84 %  
 Peak intensity 0.7 cd/lm  
 LEDs/each optic 1  
 Light colour White  
 Required components:



LED LUXEON 5050 Round LES  
 FWHM / FWTM 68.0° / 88.0°  
 Efficiency 87 %  
 Peak intensity 0.8 cd/lm  
 LEDs/each optic 1  
 Light colour White  
 Required components:



LED LUXEON 7070  
 FWHM / FWTM 63.0° / 92.0°  
 Efficiency 85 %  
 Peak intensity 0.8 cd/lm  
 LEDs/each optic 1  
 Light colour White  
 Required components:



SEOUL SEMICONDUCTOR

LED Z5M4  
 FWHM / FWTM 68.0° / 84.0°  
 Efficiency 87 %  
 Peak intensity 0.8 cd/lm  
 LEDs/each optic 1  
 Light colour White  
 Required components:

