

TINA-BW

~60° batwing beam. Assembly with black holder, installation tape and location pins.

SPECIFICATION:

Dimensions	Ø 16.1 mm
Height	9.5 mm
Fastening	tape, pin
ROHS compliant	yes ⓘ

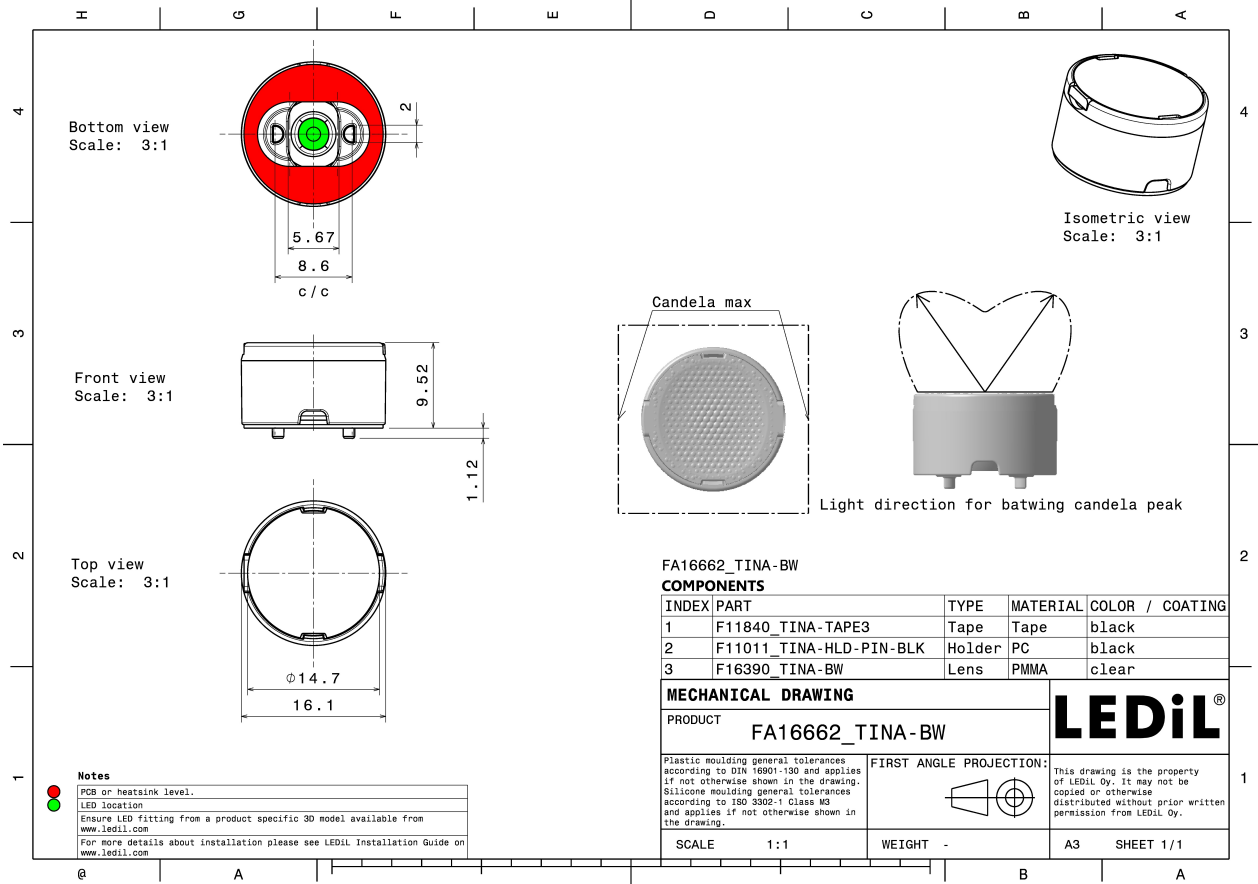
MATERIALS:

Component	Type	Material	Colour	Finish
TINA-BW	Single lens	PMMA	clear	
TINA-HLD-PIN-BLK	Holder	PC	black	
TINA-TAPE3	Tape	Acrylic foam	black	

ORDERING INFORMATION:

Component	Type	Qty in box	MOQ	MPQ	Box weight (kg)
FA16662_TINA-BW	Single lens	2016	288	144	3.4
» Box size: 470 x 240 x 105 mm					



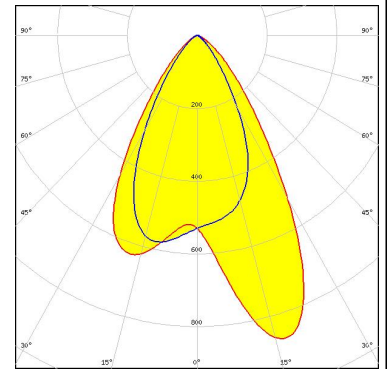


See also our general installation guide: www.ledil.com/installation_guide

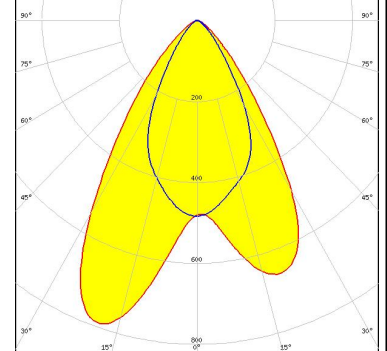
OPTICAL RESULTS (MEASURED):



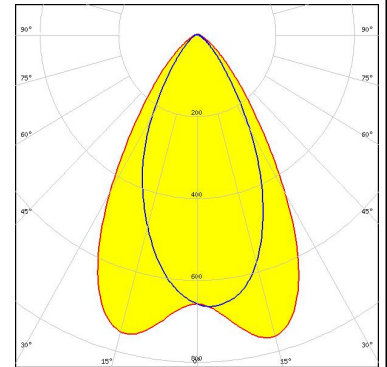
LED XHP35 HI
 FWHM / FWTM Asymmetric
 Efficiency 79 %
 Peak intensity 0.9 cd/lm
 LEDs/each optic 1
 Light colour White
 Required components:



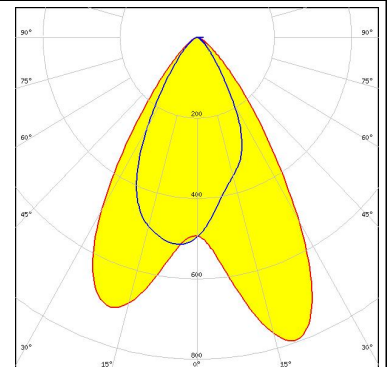
LED XP-E2
 FWHM / FWTM Asymmetric
 Efficiency 77 %
 Peak intensity 0.8 cd/lm
 LEDs/each optic 1
 Light colour White
 Required components:



LED LUXEON TX
 FWHM / FWTM Asymmetric
 Efficiency 77 %
 Peak intensity 0.8 cd/lm
 LEDs/each optic 1
 Light colour White
 Required components:



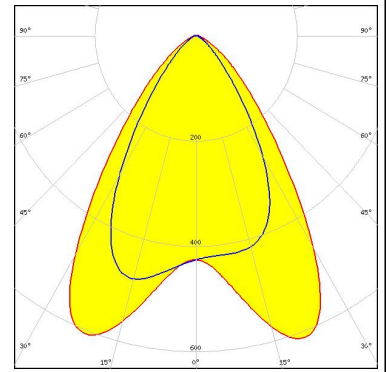
LED OSLOM SSL 150
 FWHM / FWTM Asymmetric
 Efficiency 77 %
 Peak intensity 0.9 cd/lm
 LEDs/each optic 1
 Light colour White
 Required components:



OPTICAL RESULTS (MEASURED):

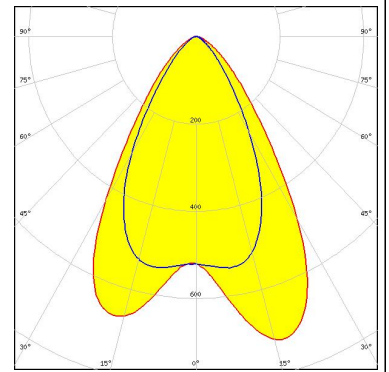
SAMSUNG

LED LH351B
FWHM / FWTM Asymmetric
Efficiency 75 %
Peak intensity 0.6 cd/lm
LEDs/each optic 1
Light colour White
Required components:



SAMSUNG

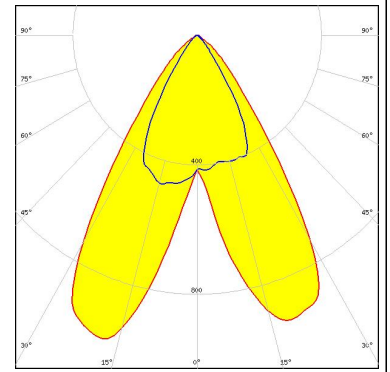
LED LH351C
FWHM / FWTM Asymmetric
Efficiency 78 %
Peak intensity 0.7 cd/lm
LEDs/each optic 1
Light colour White
Required components:



OPTICAL RESULTS (SIMULATED):

OSRAM
Opto Semiconductors

LED SYNIOS S2222
FWHM / FWTM Asymmetric
Efficiency 97 %
Peak intensity 1.1 cd/lm
LEDs/each optic 1
Light colour White
Required components:



SEOUL
SEMICONDUCTOR

LED Z5M4
FWHM / FWTM Asymmetric
Efficiency 88 %
Peak intensity 1 cd/lm
LEDs/each optic 1
Light colour White
Required components:

