

G2-ROSE-UV-SS

~14° smooth spot beam. Assembly with black holder and installation tape.

TECHNICAL SPECIFICATIONS:

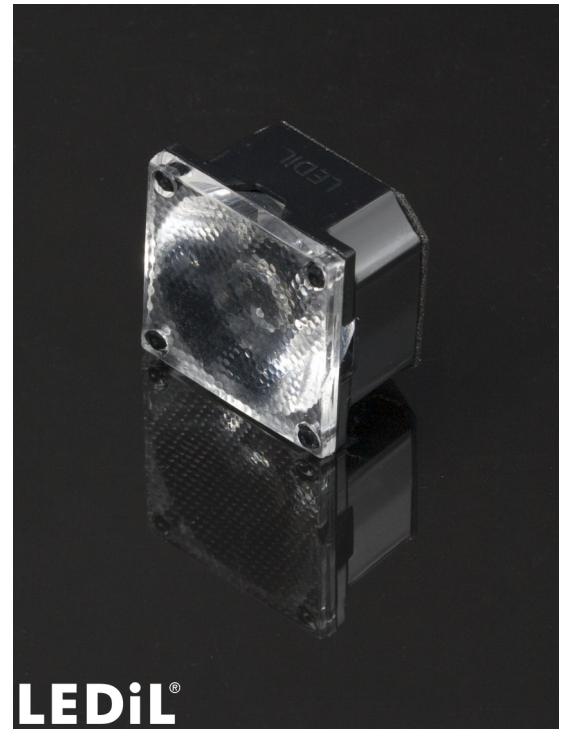
Dimensions	21.6 x 21.6 mm
Height	12.9 mm
Fastening	tape, pin
ROHS compliant	yes ⓘ

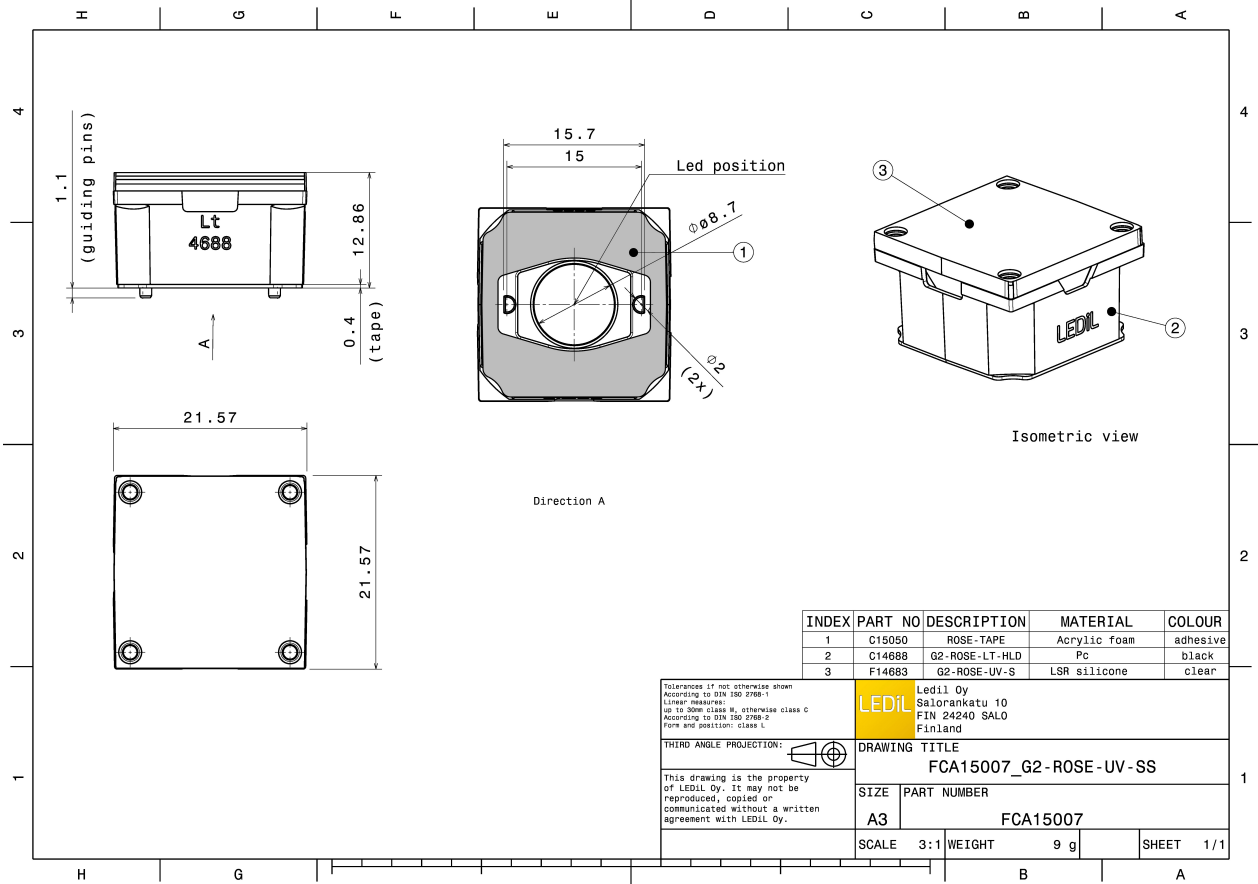
MATERIAL SPECIFICATIONS:

Component	Type	Material	Colour	Finish
G2-ROSE-UV-SS	Single lens	Silicone	clear	
G2-ROSE-LT-HLD	Holder	PC	black	
ROSE-TAPE	Tape	PU tape	black	

ORDERING INFORMATION:






Component	Type	Qty in box	MOQ	MPQ	Box weight (kg)
FCA15007_G2-ROSE-UV-SS	Single lens	1620	360	180	6.3
» Box size: 476 x 273 x 197 mm					





See also our general installation guide: www.ledil.com/installation_guide

PHOTOMETRIC DATA (MEASURED):

	
LED	LZ1-00UV00
FWHM / FWTM	12.0° / 29.0°
Efficiency	%
LEDs/each optic	1
Light colour	UV-A
Required components:	
	
LED	LZ4-04UV00
FWHM / FWTM	15.0° / 31.0°
Efficiency	%
LEDs/each optic	1
Light colour	UV-A
Required components:	
	
LED	SST-10-B130
FWHM / FWTM	10.0° / 23.0°
Efficiency	%
LEDs/each optic	1
Light colour	UV-A
Required components:	
	
LED	NVSU233A
FWHM / FWTM	14.0° / 31.0°
Efficiency	%
LEDs/each optic	1
Light colour	UV-A
Required components:	
	

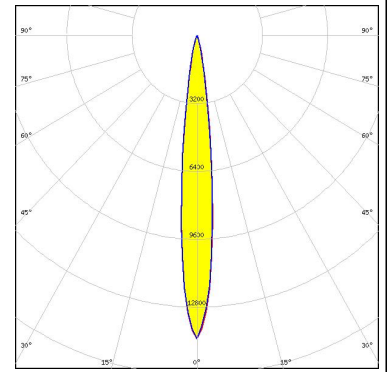
PHOTOMETRIC DATA (MEASURED):



PHOTOMETRIC DATA (SIMULATED):

LITEON

LED LTPL-C034UV-D/E/H
FWHM / FWTM 12.0° / 25.0°
Efficiency 89 %
LEDs/each optic 1
Light colour UV-A
Required components:



NICHIA

LED NVSU119C
FWHM / FWTM 12.0° / 24.0°
Efficiency 91 %
LEDs/each optic 1
Light colour UV-A
Required components:

