

FLORENTINA-4X1-MRK-M

~40° medium beam. Compatible with ultra high power LEDs.

SPECIFICATION:

Dimensions	169.7 x 49.7 mm
Height	29.7 mm
Fastening	pin, screw
ROHS compliant	yes ⓘ

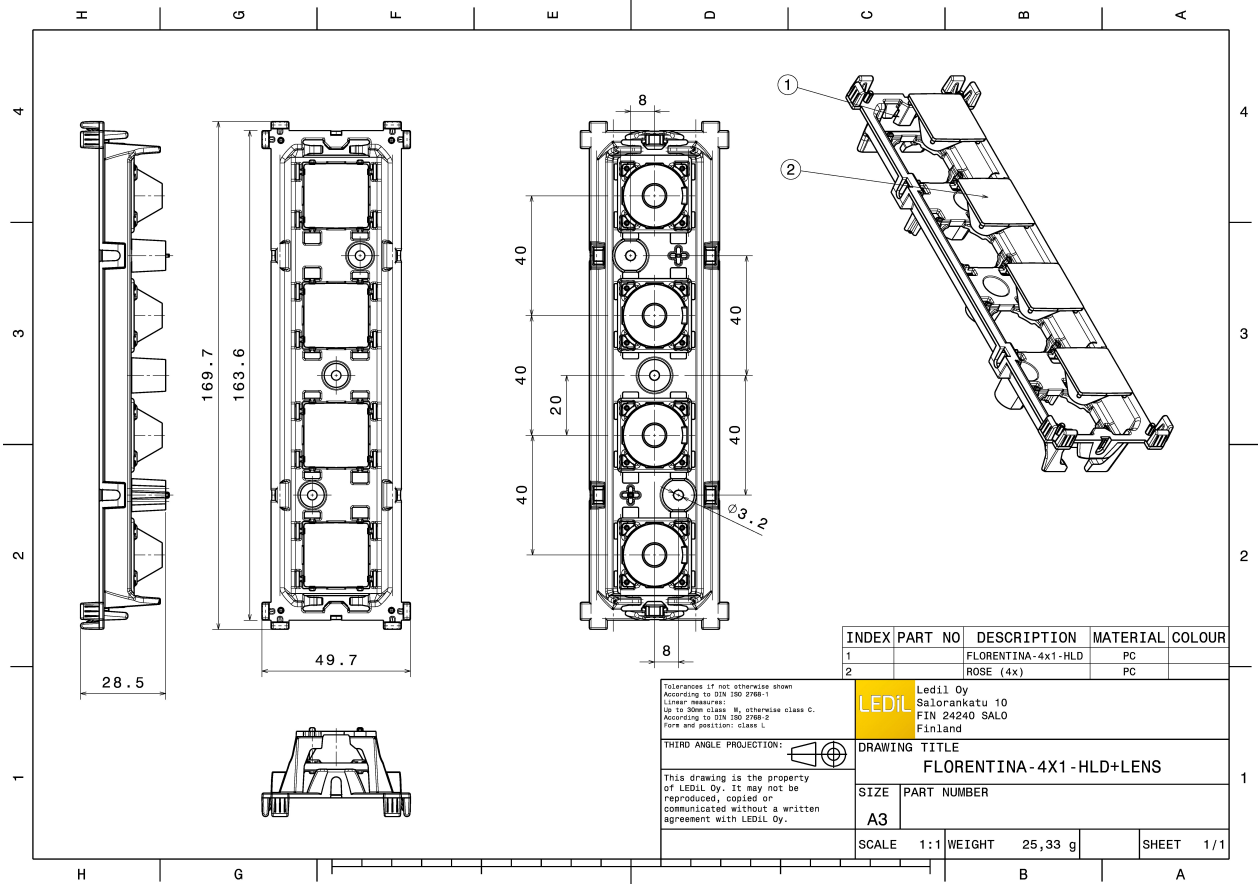


MATERIALS:

Component	Type	Material	Colour	Finish
ROSE-MRK-M	Single lens	PC	clear	
FLORENTINA-4X1-HLD	Holder	PC	black	


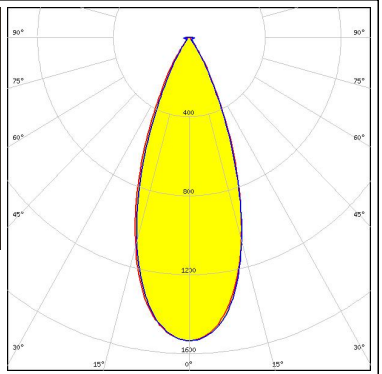
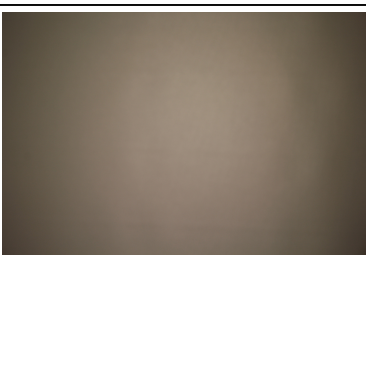
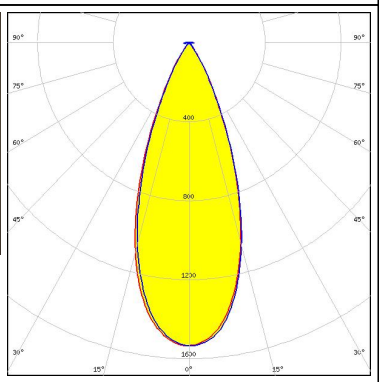

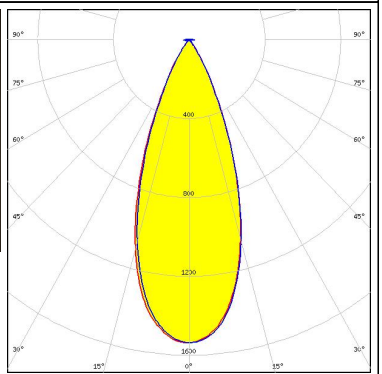
ORDERING INFORMATION:

Component		Qty in box	MOQ	MPQ	Box weight (kg)
FCP15709_FLORENTINA-4X1-MRK-M	Single lens	72	72	8	3.4
» Box size: 476 x 273 x 292 mm					



See also our general installation guide: www.ledil.com/installation_guide

OPTICAL RESULTS (MEASURED):

<p>OSRAM Opto Semiconductors</p> <p>LED OSCONIQ P 7070</p> <p>FWHM / FWTM 40.0° / 66.0°</p> <p>Efficiency 80 %</p> <p>Peak intensity 1.5 cd/lm</p> <p>LEDs/each optic 1</p> <p>Light colour White</p> <p>Required components: C15690_FLORENTINA-4X1-SHD-WHT</p>		
<p>OSRAM Opto Semiconductors</p> <p>LED OSCONIQ P 7070</p> <p>FWHM / FWTM 39.0° / 64.0°</p> <p>Efficiency 75 %</p> <p>Peak intensity 1.5 cd/lm</p> <p>LEDs/each optic 1</p> <p>Light colour White</p> <p>Required components: C15198_FLORENTINA-4X1-SHD-OPEN</p>		
<p>OSRAM Opto Semiconductors</p> <p>LED OSCONIQ P 7070</p> <p>FWHM / FWTM 39.0° / 64.0°</p> <p>Efficiency 75 %</p> <p>Peak intensity 1.5 cd/lm</p> <p>LEDs/each optic 1</p> <p>Light colour White</p> <p>Required components: C15028_FLORENTINA-4X1-SHD</p>		

OPTICAL RESULTS (SIMULATED):

OSRAM

Opto Semiconductors

LED	Duris S8
FWHM / FWTM	39.0° / 70.0°
Efficiency	76 %
Peak intensity	1.5 cd/lm
LEDs/each optic	1
Light colour	White
Required components:	
	C15028_FLORENTINA-4X1-SHD

