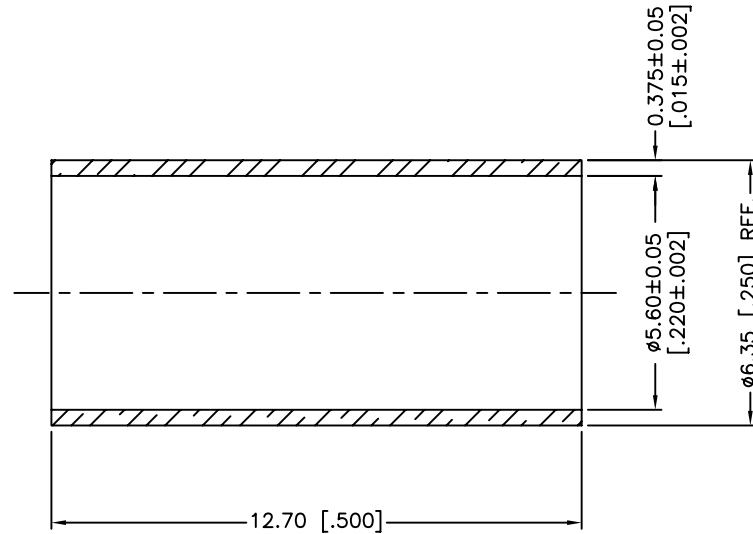
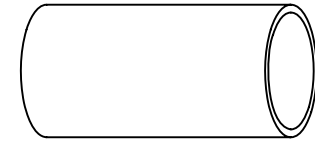


REV.	DATE	ECR NO.	DESCRIPTION
NC	06/28/00	XXXXXX	INITIAL RELEASE
A	01/20/14	2686	UPDATE DRAWING FORMAT



NOTE: ROCKWELL HARDNESS OF 65 MAX. ON 15-T SCALE
(HEAT TREAT FOR 45 MIN. AT 1100°F BEFORE PLATING)

UNLESS OTHERWISE SPECIFIED DIMENSIONS ARE IN MILLIMETERS. DIMENSIONS IN [] ARE IN INCHES AND FOR CUSTOMER REFERENCE ONLY.
UNLESS OTHERWISE SPECIFIED
TOLERANCES FOR MILLIMETERS ARE:
<0.5 ± 0.05mm
0.5 - 6mm ± 0.10mm
6 - 30mm ± 0.20mm
30 - 120mm ± 0.30mm
ANGLES ± 1°
UNLESS OTHERWISE SPECIFIED
TOLERANCES FOR INCHES ARE:
<.020 ± 0.002"
.020 - .236 ± 0.004"
.236 - 1.180 ± 0.007"
1.180 - 4.724 ± 0.012"
ANGLES ± 1°

1	FERRULE	BRASS	NICKEL	1
	DESCRIPTION	MATERIAL	FINISH	QTY

APPROVALS	DATE
DRAWN M.ZHANG	01/20/14
CHECKED	
ISSUED	
SHEET 1 OF 1	
CAD FILE	C:/CONNEX/FERRULE-223 .DWG

Amphenol Connex			
PART DESCRIPTION			
FERRULE (FOR RG-223/U CABLE)			
PART NO.			
FERRULE-223			
DWG. NO.	REV.	SIZE	SCALE
FERRULE-223 .DWG	A	A	NA

DO NOT SCALE DRAWING