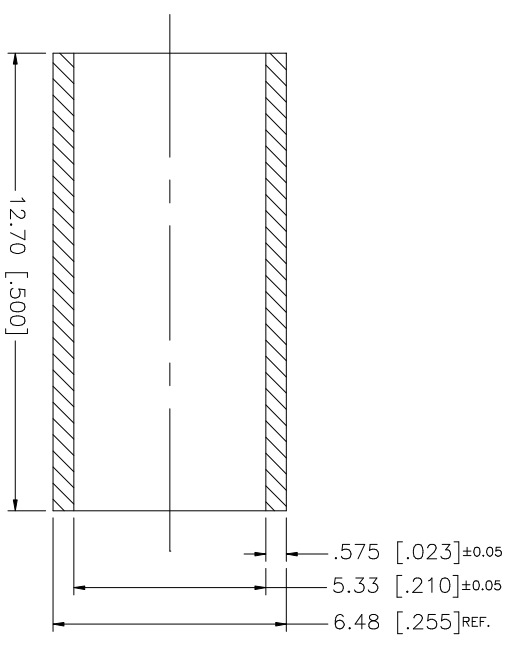


REV.	DATE	DESCRIPTION
A	04/31/03	UPDATE DRAWING FORMAT



REMARK:  
ROCKWELL HARDNESS OF  
55 MAX. ON 15-T SCALE  
(HEAT TREAT FOR 30 MIN.  
AT 900°F BEFORE PLATING)

UNLESS OTHERWISE SPECIFIED DIMENSIONS ARE IN MILLIMETERS DIMENSIONS IN [ ] ARE IN INCHES AND FOR CUSTOMER REFERENCE ONLY. TOLERANCES FOR MILLIMETERS ARE: 0.5 - 8mm ± 0.20mm 8 - 30mm ± 0.40mm 30 - 120mm ± 0.50mm UNLESS OTHERWISE SPECIFIED TOLERANCES FOR INCHES ARE: .020 - .315 = ± 0.007" .315 - 1.180 = ± 0.015" 1.180 - 4.724 = ± 0.020" DO NOT SCALE DRAWING	APPROVALS	DATE	PART DESCRIPTION	PART NO.	DWG. NO.	REV.	SIZE	SCALE
	DRAWN G.R.S.	04/31/03	<b>Amphenol Connex</b>	FERRULE - 58	FERRULE-58.DWG	B	A	NA
	CHECKED							
	ISSUED							
	SHEET 1 OF 1							
DESCRIPTION	MATERIAL	FINISH	QTY					
FERRULE	COPPER	NICKEL	1					