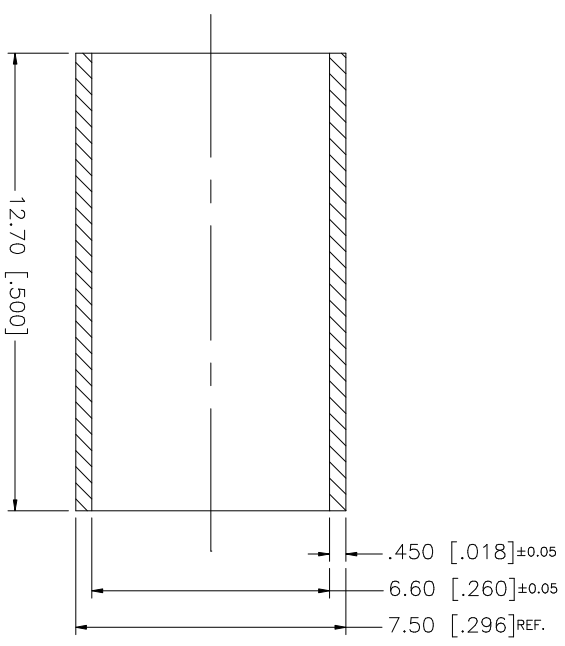


REV.	DATE	DESCRIPTION
A	06/05/03	UPDATE DRAWING FORMAT



REMARK:  
 ROCKWELL HARDNESS OF  
 55 MAX. ON 15-T SCALE  
 (HEAT TREAT FOR 45 MIN.  
 AT 1100°F BEFORE PLATING)

UNLESS OTHERWISE SPECIFIED DIMENSIONS ARE IN MILLIMETERS DIMENSIONS IN [ ] ARE IN INCHES AND FOR CUSTOMER REFERENCE ONLY.	UNLESS OTHERWISE SPECIFIED TOLERANCES FOR MILLIMETERS ARE:		UNLESS OTHERWISE SPECIFIED TOLERANCES FOR INCHES ARE:		DO NOT SCALE DRAWING
	0.5 - 8mm ± 0.20mm	8 - 30mm ± 0.40mm	30 - 120mm ± 0.50mm	.020 - .315 = ± 0.007" .315 - 1.180 = ± 0.015" 1.180 - 4.724 = ± 0.020"	
8					
7					
6					
5					
4					
3					
2					
1	FERRULE	COPPER	SILVER	1	
	DESCRIPTION	MATERIAL	FINISH	QTY	

APPROVALS		DATE
DRAWN	G.R.S.	06/05/03
CHECKED		
ISSUED		
SHEET	1 OF 1	

CAD FILE	DWG. NO.	REV.	SIZE	SCALE
C:/MISC/FERRULE-59.DWG	FERRULE-59.DWG	B	A	NA

PART DESCRIPTION	PART NO.
<b>Amphenol Connex</b>	FERRULE - 59