

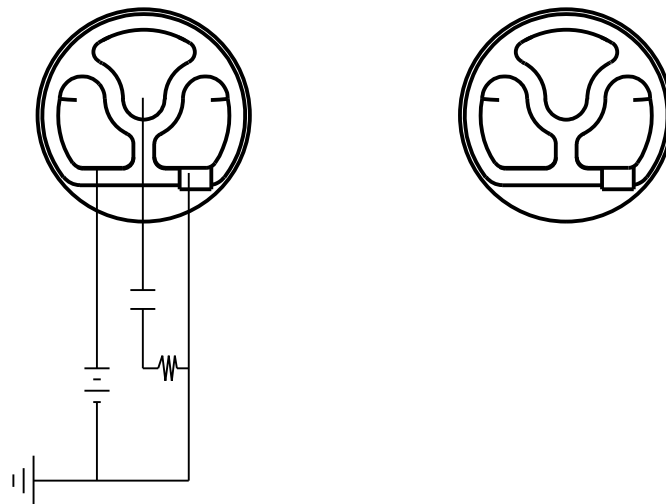
PAIR	CONSISTS OF:
FG-26108-C33	(2) FG-26107-C34

BOTH MICROPHONES OF THE PAIR ARE TESTED TO THEIR RESPECTIVE 2.1 SHEET AND THEN MATCHED TO THE OTHER MICROPHONE USING THE SPECIFICATION AND CONDITIONS BELOW:

FREQUENCY	TEST TYPE	RANGE OF DEVIATION BETWEEN MICROPHONES	UNITS
200 Hz	PHASE	2.0 MAX.	DEGREES
500 Hz	SENSITIVITY	1.0 MAX.	dBV

NOTES:

1. DC SUPPLY VOLTAGE 0.930 VOLTS.
2. TESTED WITH 33 k Ω LOAD AND 2.2 μ F CAPACITOR COUPLED TO THE OUTPUT, SEE SCHEMATIC.
3. SENSITIVITY AND PHASE VALUES INDICATED ARE VALID AT 50% RH.



Revision	C.O. #	Implementation Date	RELEASE LEVEL	REVISION
C	MI0104840	10-15-12	Active	C
B	MI0101312	12-8-06		
A	MI0100968	1-23-06		

KNOWLES ELECTRONICS
ITASCA, ILLINOIS U.S.A.

WHEN TEST LIMITS ARE USED TO ESTABLISH INCOMING INSPECTION ACCEPTANCE/REJECTION CRITERIA, CORRELATION OF TEST EQUIPMENT WITH KNOWLES IS ALSO REQUIRED FOR ELIMINATION OF EQUIPMENT AND TEST METHOD VARIATION

TITLE: **MATCHED PAIR**
PERFORMANCE SPECIFICATION

FC-26108-C33
SHT 2.1

DR. BY	DATE
MMM	1-23-06
CK. BY	DATE
GJP	1-25-06
APP. BY	DATE
GJP	1-25-06