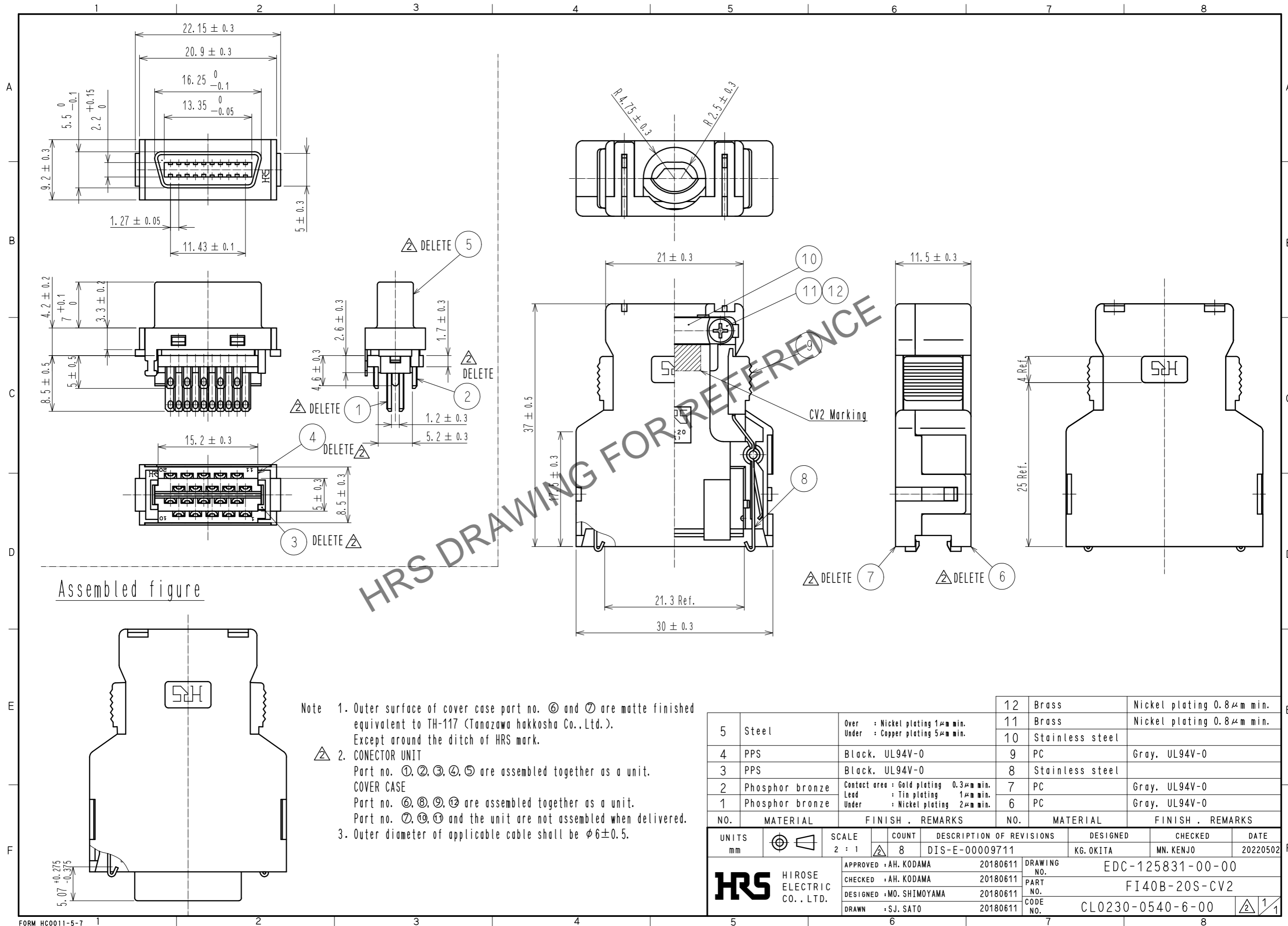


Jan.1.2024 Copyright 2024 HIROSE ELECTRIC CO., LTD. All Rights Reserved.
 In case of consideration for using Automotive equipment / device which demand high reliability, kindly contact our sales window correspondents.



Note 1. Outer surface of cover case part no. ⑥ and ⑦ are matte finished equivalent to TH-117 (Tanazawa hakkosha Co., Ltd.). Except around the ditch of HRS mark.

②. CONNECTOR UNIT
 Part no. ①, ②, ③, ④, ⑤ are assembled together as a unit.

COVER CASE
 Part no. ⑥, ⑧, ⑨, ⑫ are assembled together as a unit.
 Part no. ⑦, ⑩, ⑪ and the unit are not assembled when delivered.

3. Outer diameter of applicable cable shall be φ6 ± 0.5.

NO.	MATERIAL	FINISH . REMARKS	NO.	MATERIAL	FINISH . REMARKS
5	Steel	Over : Nickel plating 1μm min. Under : Copper plating 5μm min.	12	Brass	Nickel plating 0.8μm min.
4	PPS	Black. UL94V-0	11	Brass	Nickel plating 0.8μm min.
3	PPS	Black. UL94V-0	10	Stainless steel	
2	Phosphor bronze	Contact area : Gold plating 0.3μm min. Lead : Tin plating 1μm min.	9	PC	Gray. UL94V-0
1	Phosphor bronze	Under : Nickel plating 2μm min.	8	Stainless steel	
			7	PC	Gray. UL94V-0
			6	PC	Gray. UL94V-0

UNITS	SCALE	COUNT	DESCRIPTION OF REVISIONS	DESIGNED	CHECKED	DATE
mm	2 : 1	8	DIS-E-00009711	KG. OKITA	MN. KENJO	20220502

APPROVED	CHECKED	DESIGNED	DRAWN	DRAWING NO.	PART NO.	CODE NO.
AH. KODAMA 20180611	AH. KODAMA 20180611	MO. SHIMOYAMA 20180611	SJ. SATO 20180611	EDC-125831-00-00	FI40B-20S-CV2	CL0230-0540-6-00