

VIOLET-12X1-S

~20° wide beam when used with one UV LED

TECHNICAL SPECIFICATIONS:

Dimensions	294.8 x 41.6 mm
Height	8.8 mm
Fastening	screw
ROHS compliant	yes ⓘ

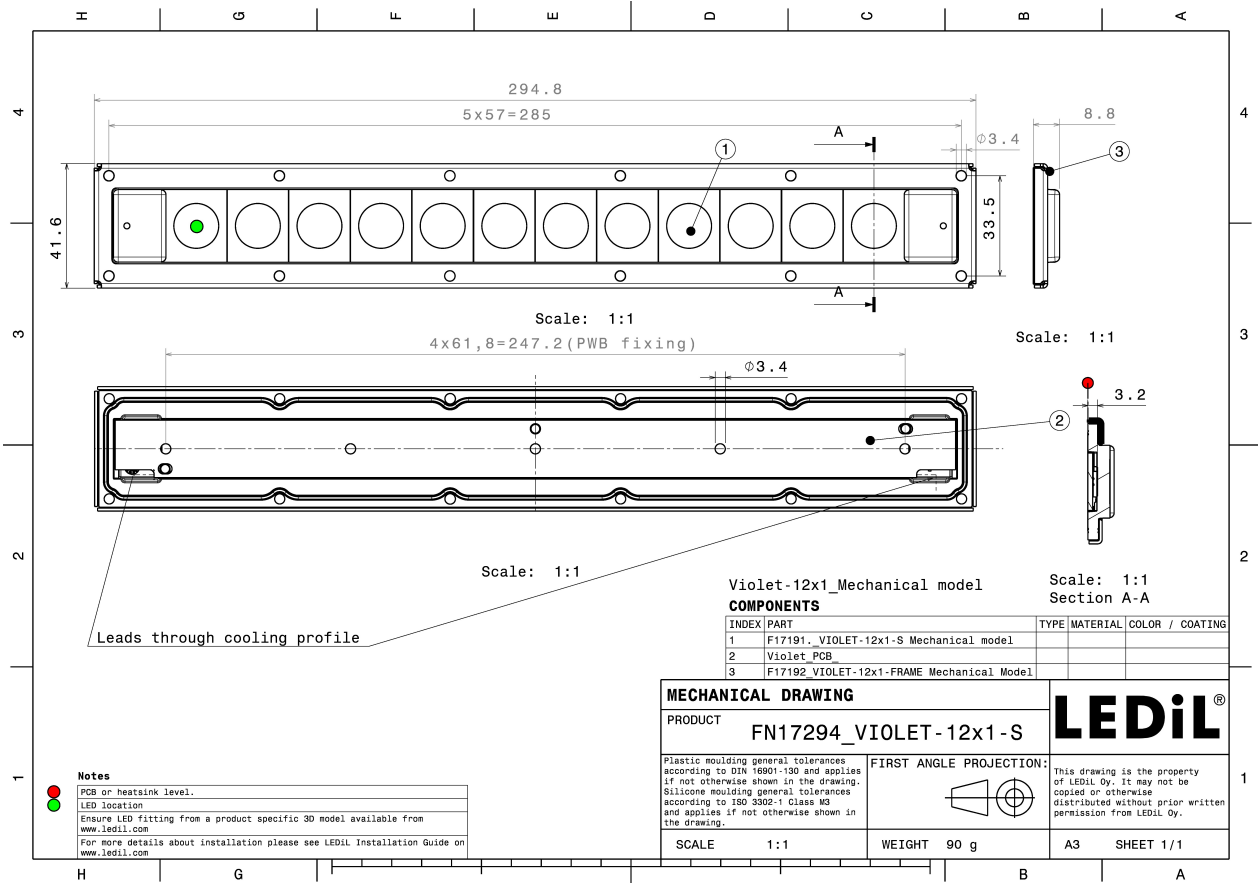
MATERIAL SPECIFICATIONS:

Component	Type	Material	Colour	Finish
VIOLET-12X1-S	Multi-lens	Silicone	clear	
VIOLET-12X1-FRAME	Accessory	Stainless steel	metal	



ORDERING INFORMATION:

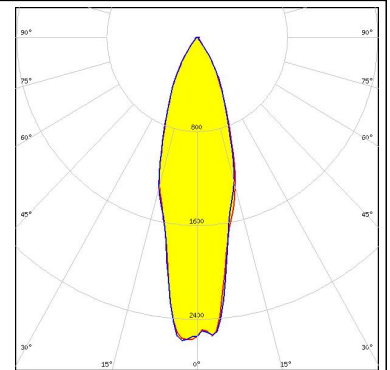
Component	Type	Qty in box	MOQ	MPQ	Box weight (kg)
FN17294_VIOLET-12X1-S » Box size: 398 x 298 x 150 mm	Multi-lens	78	26	26	7.7



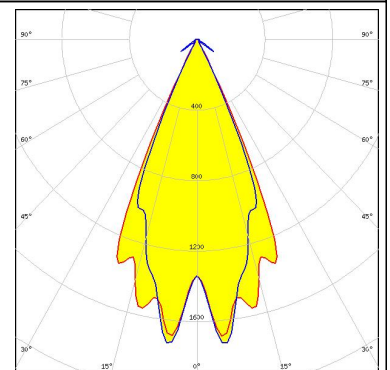
PHOTOMETRIC DATA (SIMULATED):



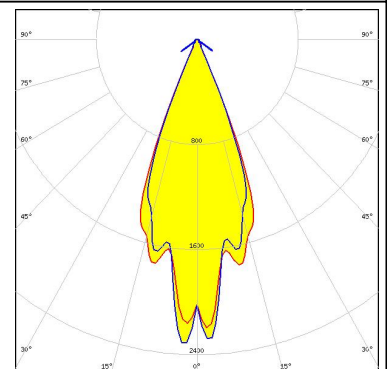
LED XT-E
 FWHM 30.0°
 Efficiency 86 %
 Peak intensity 2.4 cd/lm
 LEDs/each optic 1
 Light colour White
 Required components:



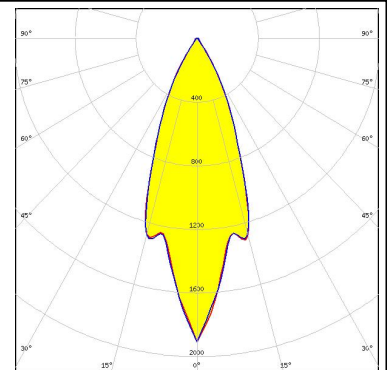
LED LTPL-G35UVC-GC
 FWHM 46.0°
 Efficiency 72 %
 LEDs/each optic 1
 Light colour UV
 Required components:



LED LTPL-G35UVC-GR
 FWHM 40.0°
 Efficiency 72 %
 LEDs/each optic 1
 Light colour UV
 Required components:



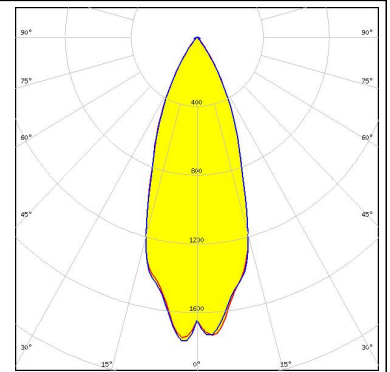
LED NCSU334A
 FWHM 40.0°
 Efficiency 72 %
 LEDs/each optic 1
 Light colour UV
 Required components:



PHOTOMETRIC DATA (SIMULATED):

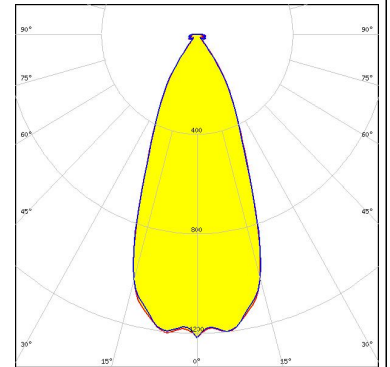
SAMSUNG

LED LM301B
 FWHM 38.0°
 Efficiency 88 %
 Peak intensity 1.8 cd/lm
 LEDs/each optic 1
 Light colour White
 Required components:



SEOUL VIOSYS

LED WICOP DY9560-27
 FWHM 43.0°
 Efficiency 66 %
 LEDs/each optic 4
 Light colour UV
 Required components:



SEOUL VIOSYS

LED WICOP DY9560-27
 FWHM 22.0°
 Efficiency 72 %
 LEDs/each optic 1
 Light colour UV
 Required components:

