

## LISA2-WW-CLIP

~45° wide beam optimized for CREE XP-E. 6.8 mm high variant with clip installation.

### SPECIFICATION:

Dimensions	Ø 9.9 mm
Height	6.8 mm
Fastening	glue, clips
ROHS compliant	yes ⓘ

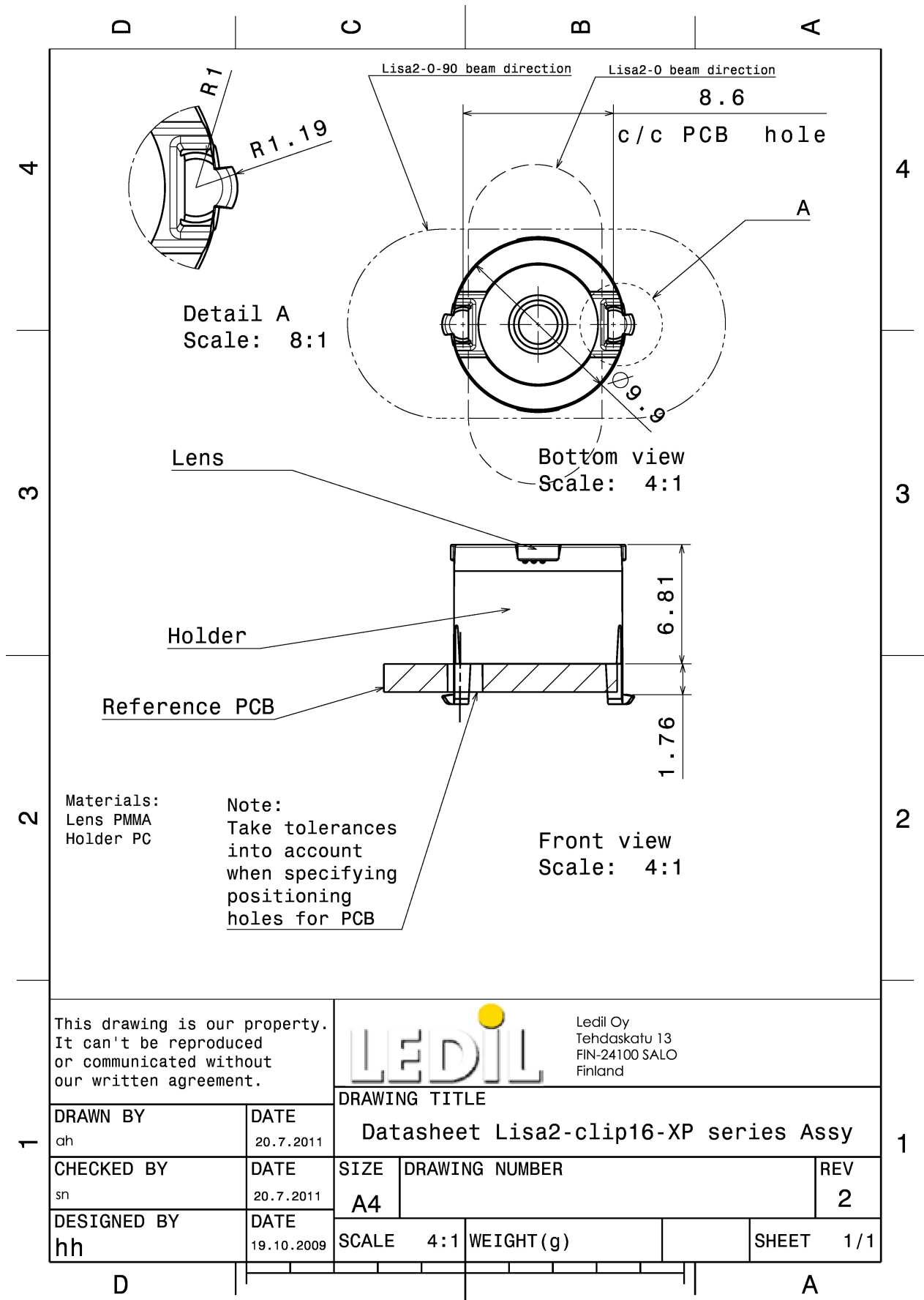


### MATERIALS:

Component	Type	Material	Colour	Finish
LISA2-WW	Single lens	PMMA	clear	
LISA2-HLD-CLIP16-XP	Holder	PC	black	

### ORDERING INFORMATION:

Component		Qty in box	MOQ	MPQ	Box weight (kg)
FP11077_LISA2-WW-CLIP	Single lens	2000		100	1.4
» Box size:					



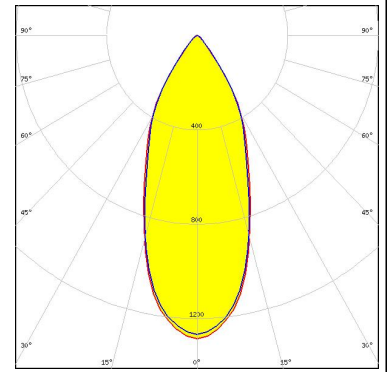
This drawing is our property. It can't be reproduced or communicated without our written agreement.		<b>LEDiL</b>		Ledil Oy Tehdaskatu 13 FIN-24100 SALO Finland	
<b>DRAWN BY</b> ch		<b>DATE</b> 20.7.2011		<b>DRAWING TITLE</b> Datasheet Lisa2-clip16-XP series Assy	
<b>CHECKED BY</b> sn		<b>DATE</b> 20.7.2011		<b>REV</b> 2	
<b>DESIGNED BY</b> hh		<b>DATE</b> 19.10.2009		<b>SCALE</b> 4:1	
		<b>WEIGHT (g)</b>		<b>SHEET</b> 1/1	

See also our general installation guide: [www.ledil.com/installation\\_guide](http://www.ledil.com/installation_guide)

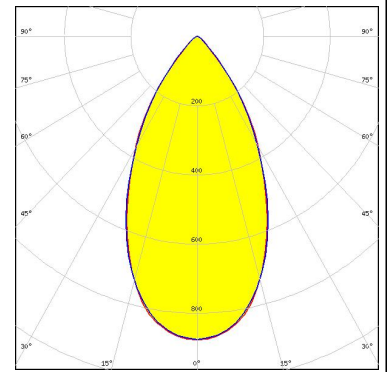
#### OPTICAL RESULTS (MEASURED):



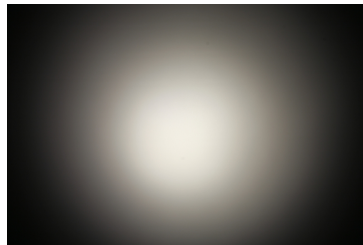
LED XP-E  
 FWHM / FWTM 42.0° / 78.0°  
 Efficiency 91 %  
 Peak intensity 1.3 cd/lm  
 LEDs/each optic 1  
 Light colour White  
 Required components:



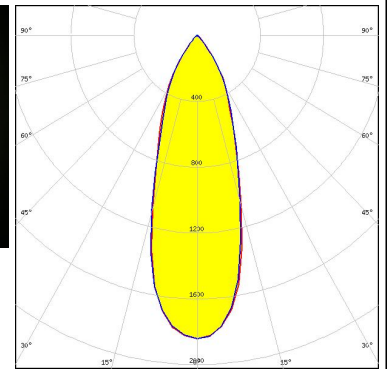
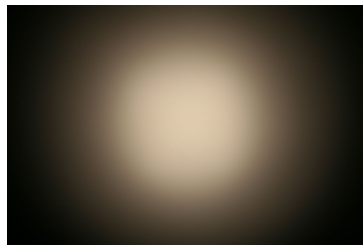
LED XP-G  
 FWHM / FWTM 54.0° / 88.0°  
 Efficiency 90 %  
 Peak intensity 0.9 cd/lm  
 LEDs/each optic 1  
 Light colour White  
 Required components:



LED LUXEON Z  
 FWHM / FWTM 28.0° / 70.0°  
 Efficiency 87 %  
 Peak intensity 2.3 cd/lm  
 LEDs/each optic 1  
 Light colour White  
 Required components:



LED LUXEON Z ES  
 FWHM / FWTM 35.0° / 73.0°  
 Efficiency 88 %  
 Peak intensity 1.8 cd/lm  
 LEDs/each optic 1  
 Light colour White  
 Required components:



#### OPTICAL RESULTS (MEASURED):

##### OSRAM

Opto Semiconductors

LED SFH 4170S  
FWHM / FWTM 29.0° / 73.0°  
Efficiency %  
LEDs/each optic 1  
Light colour IR  
Required components:

##### OSRAM

Opto Semiconductors

LED SFH 4180S  
FWHM / FWTM 27.0° / 71.0°  
Efficiency %  
LEDs/each optic 1  
Light colour IR  
Required components:

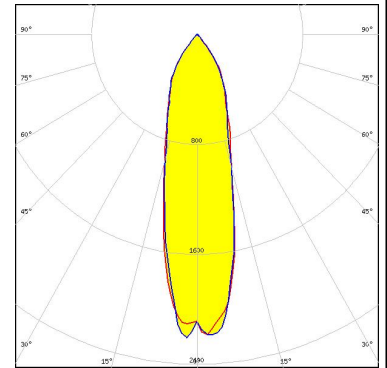
#### OPTICAL RESULTS (SIMULATED):



LED XQ-E HD  
 FWHM / FWTM 72.0° / 99.0°  
 Efficiency 90 %  
 Peak intensity 0.7 cd/lm  
 LEDs/each optic 1  
 Light colour White  
 Required components:



LED XQ-E HI  
 FWHM / FWTM 27.0° / 72.0°  
 Efficiency 89 %  
 Peak intensity 2.3 cd/lm  
 LEDs/each optic 1  
 Light colour White  
 Required components:



LED NCSxE17A  
 FWHM / FWTM 31.0° / 68.0°  
 Efficiency 85 %  
 Peak intensity 2.1 cd/lm  
 LEDs/each optic 1  
 Light colour White  
 Required components:

