

FLORENTINA-HLD-BW

~60° batwing beam

SPECIFICATION:

Dimensions	285.6 x 19.5 mm
Height	10.2 mm
Fastening	clips
ROHS compliant	yes ⓘ

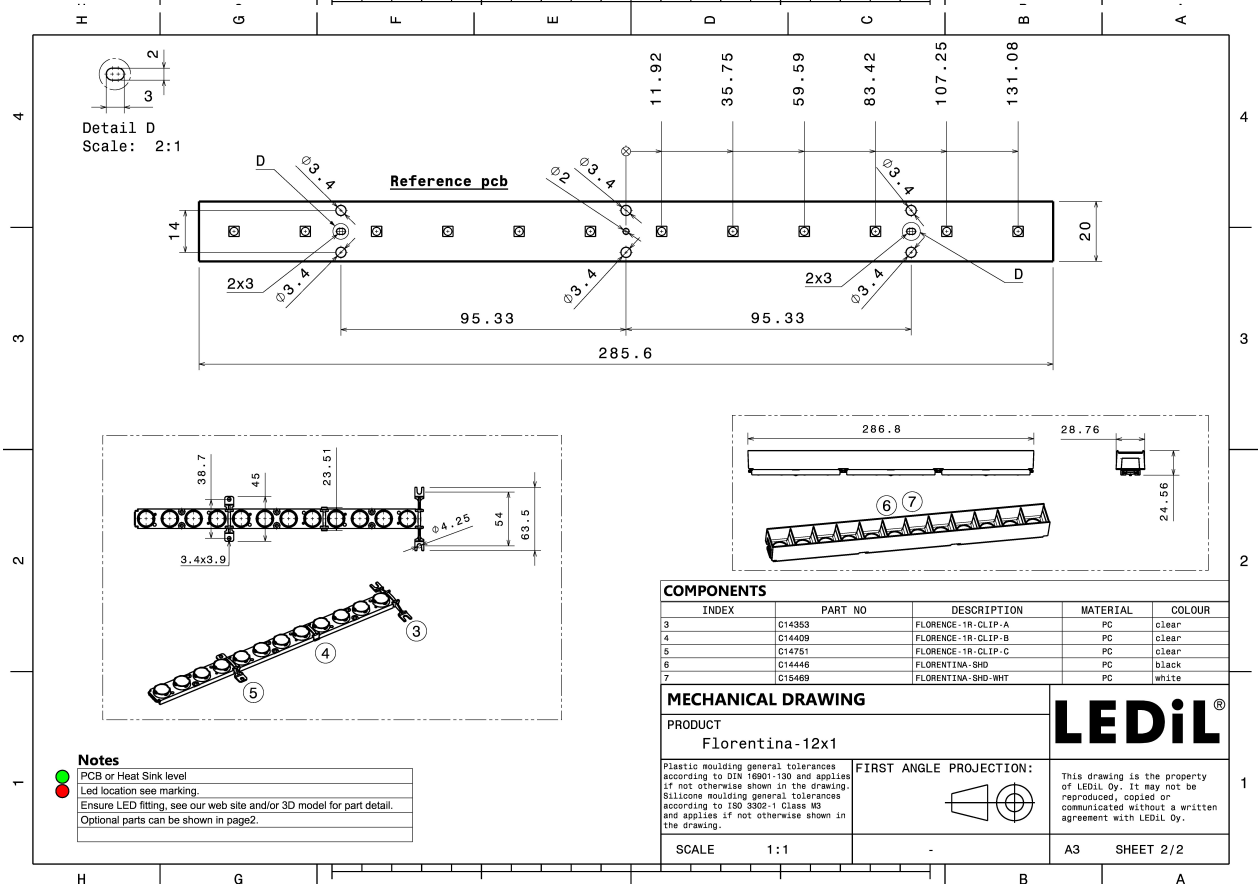
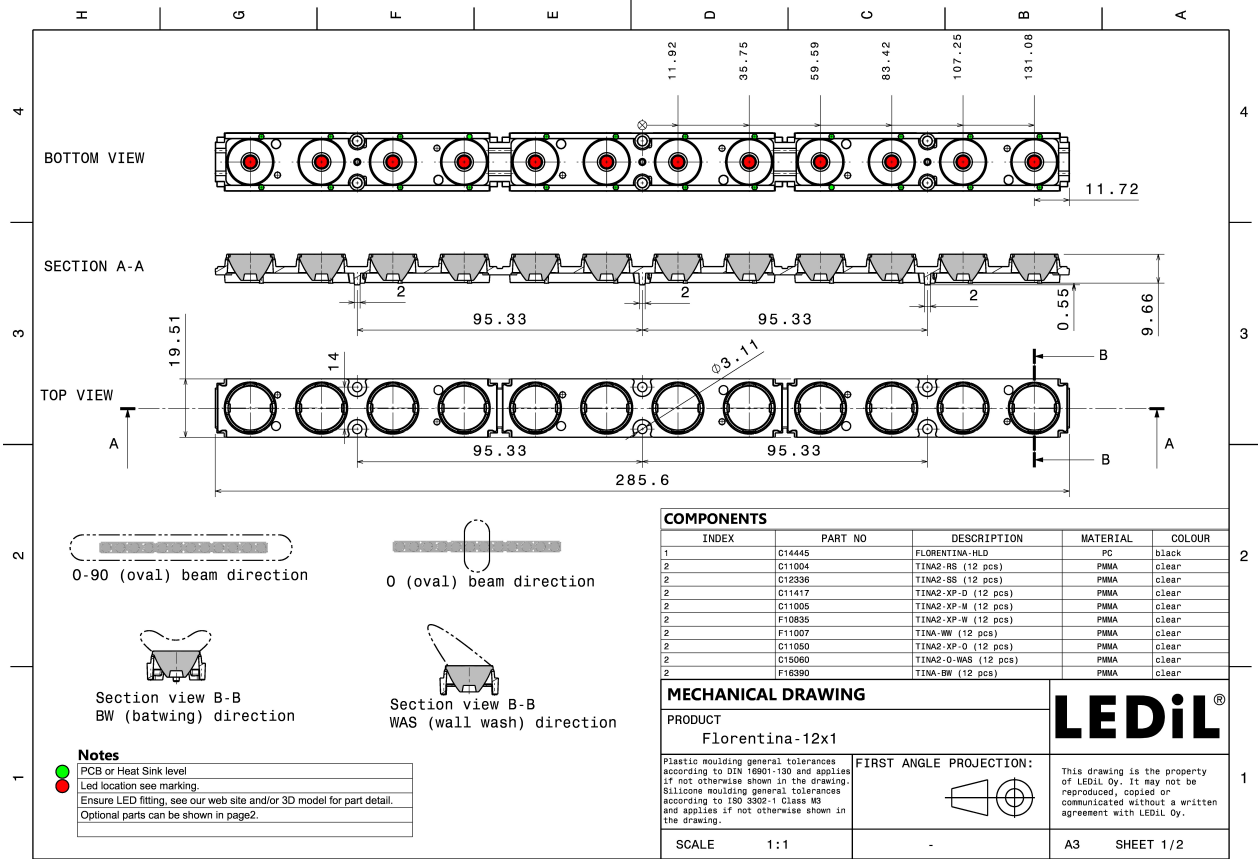
MATERIALS:

Component	Type	Material	Colour	Finish
TINA-BW	Single lens	PMMA	clear	
FLORENTINA-HLD	Holder	PC	black	

ORDERING INFORMATION:

Component	Type	Qty in box	MOQ	MPQ	Box weight (kg)
FP16391_FLORENTINA-HLD-BW » Box size: 398 x 298 x 140 mm	Single lens	160	32	16	3.6



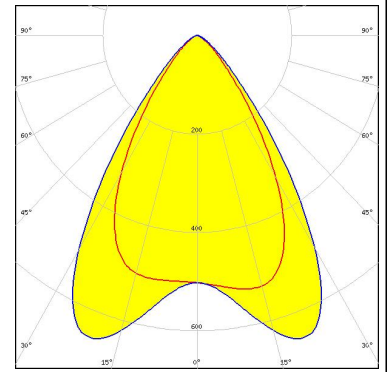


See also our general installation guide: www.ledil.com/installation_guide

OPTICAL RESULTS (MEASURED):

SAMSUNG

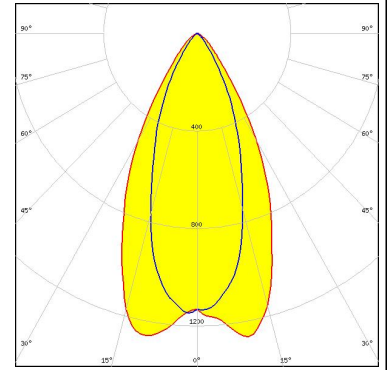
LED LH351B
FWHM / FWTM Asymmetric
Efficiency 80 %
Peak intensity 0.7 cd/lm
LEDs/each optic 1
Light colour White
Required components:



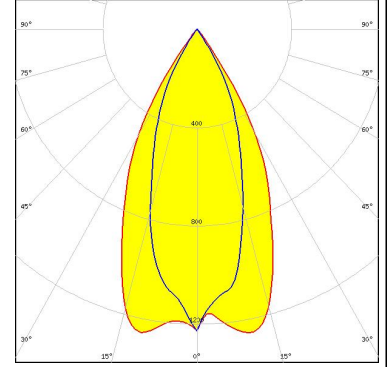
OPTICAL RESULTS (SIMULATED):



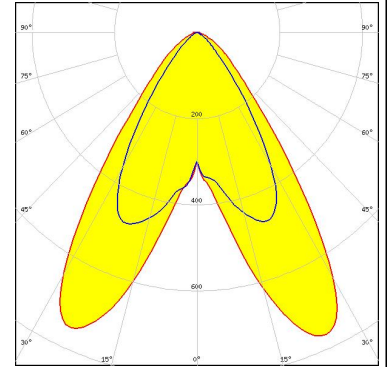
LED J Series 3030
 FWHM / FWTM Asymmetric
 Efficiency 91 %
 Peak intensity 1.3 cd/lm
 LEDs/each optic 1
 Light colour White
 Required components:



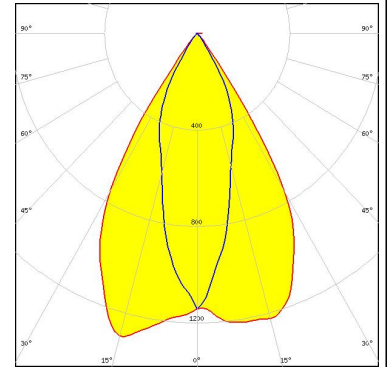
LED J Series 3030
 FWHM / FWTM Asymmetric
 Efficiency 79 %
 Peak intensity 1.3 cd/lm
 LEDs/each optic 1
 Light colour White
 Required components:
 C14446_FLORENTINA-SHD



LED LUXEON HL2X
 FWHM / FWTM Asymmetric
 Efficiency 87 %
 Peak intensity 0.8 cd/lm
 LEDs/each optic 1
 Light colour White
 Required components:



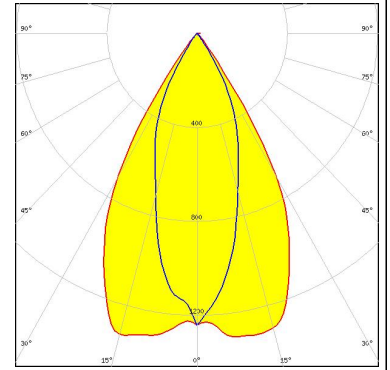
LED NCSxE17A
 FWHM / FWTM Asymmetric
 Efficiency 94 %
 Peak intensity 1.3 cd/lm
 LEDs/each optic 1
 Light colour White
 Required components:
 C14446_FLORENTINA-SHD



OPTICAL RESULTS (SIMULATED):



LED NVSxE21A
FWHM / FWTM Asymmetric
Efficiency 94 %
Peak intensity 1.3 cd/lm
LEDs/each optic 1
Light colour White
Required components:
C14446_FLORENTINA-SHD



LED OSLO Square EC
FWHM / FWTM Asymmetric
Efficiency 88 %
Peak intensity 0.8 cd/lm
LEDs/each optic 1
Light colour White
Required components:

