



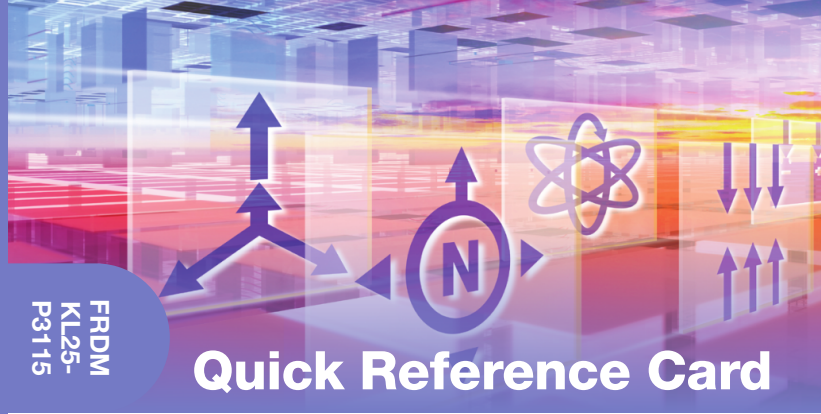
For more information,  
visit [freescale.com/  
sensortoolbox](http://freescale.com/sensortoolbox)

FRDM  
KL25-  
P3115

Freescale and the Freescale logo are trademarks of Freescale Semiconductor, Inc. Reg., U.S. Pat. & Tm. Off. All other product or service names are the property of their respective owners.  
© 2015 Freescale Semiconductor, Inc.  
FRDMK25FP3115QRC REV 1  
920-288986 REV A

# FRDMKL25-P3115

FRDM  
KL25-  
P3115



## Quick Reference Card

### Pressure Sensor Toolbox Demonstration Kit

FRDMSTBC-P3115 with MPL3115A2 I<sup>2</sup>C precision altimeter and Freescale Freedom FRDM-KL25Z development board



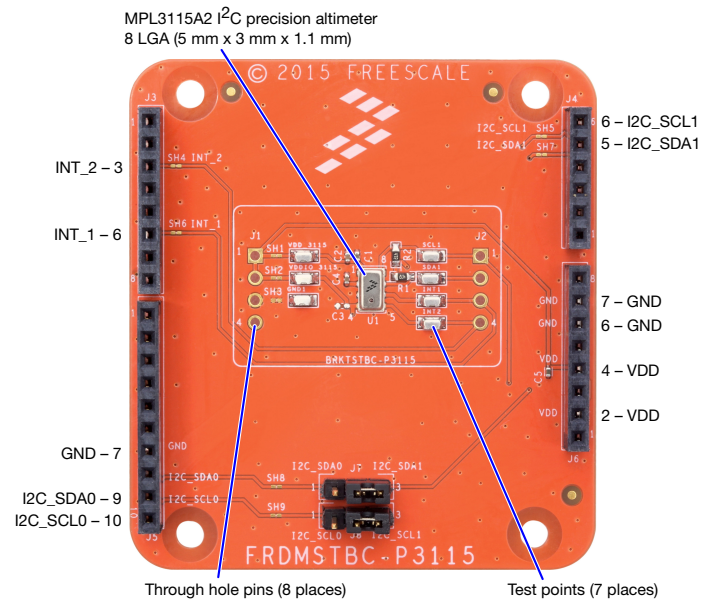
### Get Started

Download tools and documentation under **Jump Start Your Design** at [freescale.com/sensortoolbox](http://freescale.com/sensortoolbox)



FREESCALE FREEDOM PLATFORM

- 1 Verify package contents:
  - FRDM-KL25Z/FRDMSTBC-P3115 assembly
  - USB cable
  - Flexible tube
- 2 Download the mbed Windows serial port driver: [developer.mbed.org/handbook/Windows-serial-configuration](http://developer.mbed.org/handbook/Windows-serial-configuration)
- 3 Plug one end of a USB cable into the SDA port on the assembly. Plug the other end of the cable into the USB port on the computer.
- 4 Download and install the latest Sensor Toolbox software at: [freescale.com/sensortoolbox](http://freescale.com/sensortoolbox)
- 5 Start the Sensor Toolbox software.



Get to Know the FRDMKL25-P3115



Learn more at [freescale.com/sensortoolbox](http://freescale.com/sensortoolbox)