



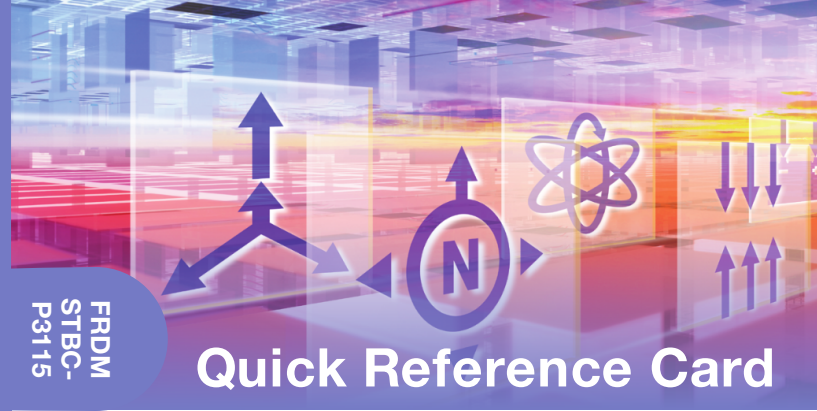
For more information,  
visit [freescale.com/  
sensortoolbox](http://freescale.com/sensortoolbox)

Freescale and the Freescale logo are  
trademarks of Freescale Semiconductor, Inc.,  
Reg. U.S. Pat. & Tm. Off. All other product  
or service names are the property of their  
respective owners.  
© 2015 Freescale Semiconductor, Inc.  
FRDMSTBCP3115QRC REV 1  
920-28881 REV A

FRDM  
STBC-  
P3115

# FRDMSTBC-P3115

FRDM  
STBC-  
P3115



## Quick Reference Card

**Pressure Sensor Toolbox Development Board**  
MPL3115A2 I<sup>2</sup>C precision altimeter sensor



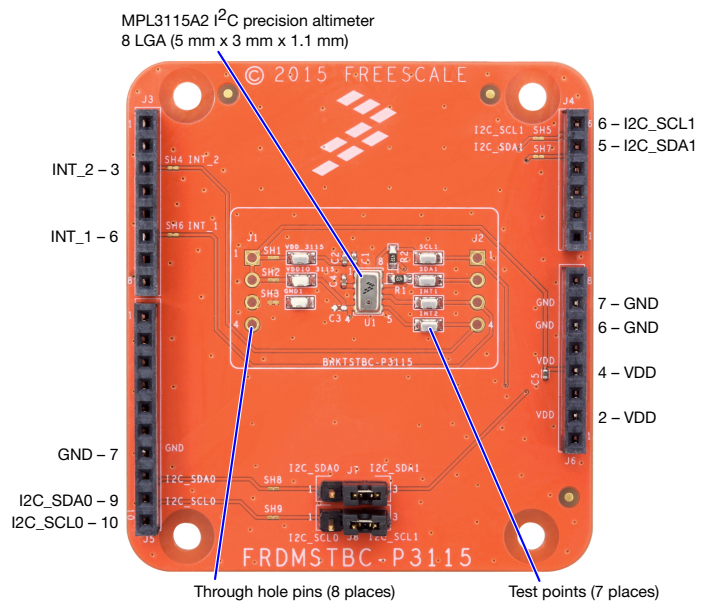
### Get Started

Download tools and  
documentation under  
**Jump-Start Your Design**  
at [freescale.com/  
sensortoolbox](http://freescale.com/sensortoolbox)



FREESCALE FREEDOM PLATFORM

- 1 Verify package contents:
  - FRDMSTBC-P3115 development board
- 2 Connect the FRDMSTBC-P3115 development board to a Freescale Freedom development board, such as the FRDM-KL25Z (or any Arduino R3 compatible board). Refer to the Freescale Freedom development board Quick Start Guide for driver information.
- 3 Plug one end of a USB cable into the SDA port on the assembly. Plug the other end of the cable into the USB port on the computer.
- 4 Download and install the latest Sensor Toolbox software at: [freescale.com/sensortoolbox](http://freescale.com/sensortoolbox)
- 5 Start the Sensor Toolbox software.



Get to Know the FRDMSTBC-P3115



Learn more at [freescale.com/sensortoolbox](http://freescale.com/sensortoolbox)