	<b>E502650</b>
---	----------------

**Features**

- Lead Free Finish/RoHS Compliant (Note1) ("P" Suffix Designates Compliant. See Ordering Information)
- Epoxy Meets UL 94 V-0 Flammability Rating
- Moisture Sensitivity Level 1
- Any Mounting Position
- With Heat Sink On Top

**Maximum Ratings**

- Operating Junction Temperature Range: -55°C to +150°C
- Storage Temperature Range: -55°C to +150°C
- Thermal Resistance: 1.35°C/W Junction To Case With Heatsink

**Mechanical Data**

- Mounting Torque: 8.0 in-lbs Maximum
- Mounting Hole For #10 Screw

MCC Part Number	Device Marking	Maximum Recurrent Peak Reverse Voltage	Maximum RMS Voltage	Maximum DC Blocking Voltage
GBPC35005W	GBPC35005W	50V	35V	50V
GBPC3501W	GBPC3501W	100V	70V	100V
GBPC3502W	GBPC3502W	200V	140V	200V
GBPC3504W	GBPC3504W	400V	280V	400V
GBPC3506W	GBPC3506W	600V	420V	600V
GBPC3508W	GBPC3508W	800V	560V	800V
GBPC3510W	GBPC3510W	1000V	700V	1000V

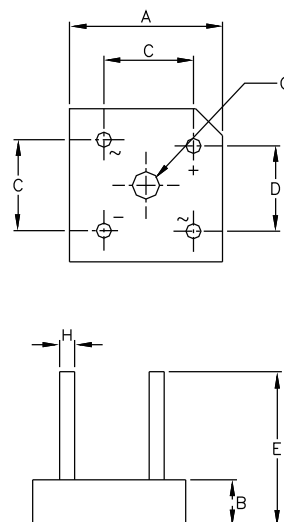
**Electrical Characteristics @ 25°C Unless Otherwise Specified**

Average Forward Current	$I_{F(AV)}$	35A	$T_C = 60^\circ C$
Peak Forward Surge Current	$I_{FSM}$	400A	8.3ms, Half Sine
Maximum Forward Voltage Drop Per Element	$V_F$	1.1V	$I_{FM} = 17.5A$ Per Element; $T_J = 25^\circ C$
Maximum DC Reverse Current At Rated DC Blocking Voltage	$I_R$	5µA 500µA	$T_J = 25^\circ C$ $T_J = 125^\circ C$

Note: 1. High Temperature Solder Exemption Applied, See EU Directive Annex Notes 7

**35 Amp Glass  
Passivated Single  
Phase Bridge  
Rectifier  
50 to 1000 Volts**

GBPC-W



DIM	DIMENSIONS				NOTE
	INCHES		MM		
	MIN	MAX	MIN	MAX	
A	1.110	1.142	28.20	29.00	
B	0.425	0.445	10.80	11.30	
C	0.673	0.752	17.10	19.10	
D	0.410	0.490	10.40	12.40	
E	1.180	---	30.00	---	
H	0.038	0.042	0.97	1.07	
G	0.200	0.220	5.08	5.59	

**Curve Characteristics**

Fig. 1 - Forward Current Derating Curve

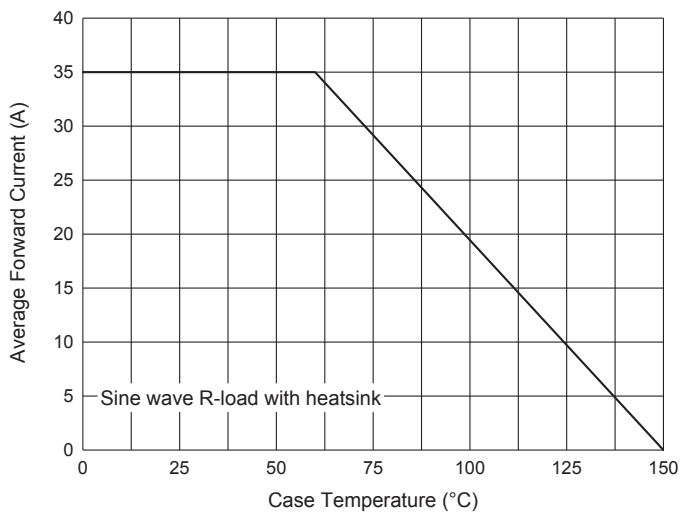


Fig. 2 - Maximum Non-Repetitive Peak Forward Surge Current

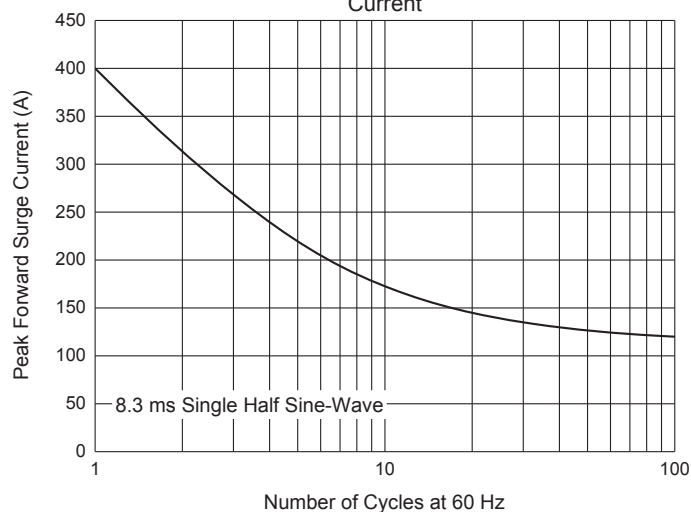


Fig. 3 - Typical Instantaneous Forward Characteristics

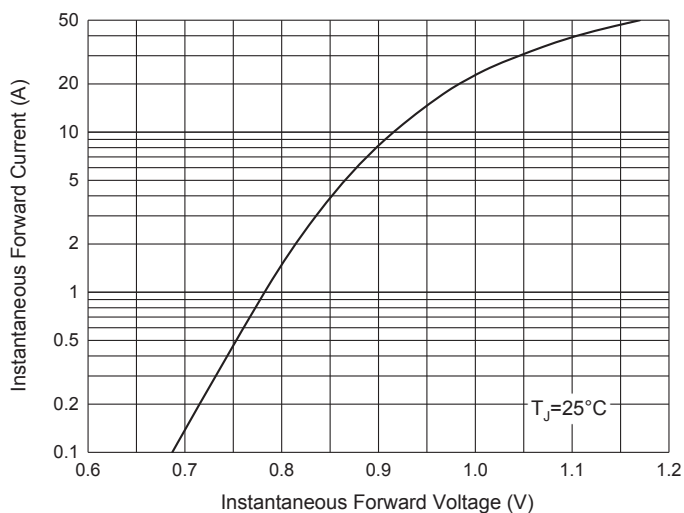


Fig. 4 - Typical Reverse Leakage Characteristics

