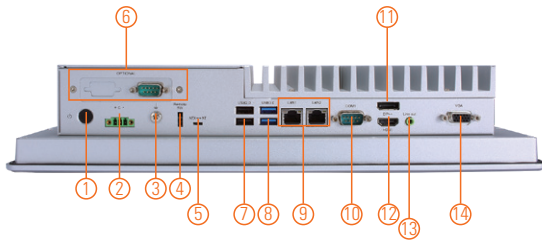
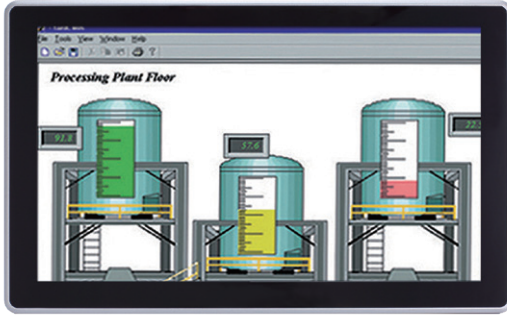


# GOT318W-521

18.5" FHD TFT Multi-touch Panel Computer with LGA1151 9th/8th Gen Intel® Core™ i7/i5/i3, Intel® Pentium® Gold or Intel® Celeron® Processor (up to 35W)



- |  |                                |
|--|--------------------------------|
| 1. Power button                                  | 8. 2 x USB 3.0                 |
| 2. Phoenix small type connector                  | 9. 2 x LAN                     |
| 3. Grounding hole                                | 10. 1 x COM for RS-232/422/485 |
| 4. Remote power switch                           | 11. 1 x DP                     |
| 5. AT/ATX switch                                 | 12. 1 x HDMI                   |
| 6. Optional flexible I/O<br>(default 1 x RS-232) | 13. 1 x Line-out               |
| 7. 2 x USB 2.0                                   | 14. 1 x VGA                    |

## Features

- 18.5" FHD projected capacitive multi-touch or 5-wire resistive touch
- Fanless design with LGA1151 9th/8th gen Intel® Core™ i7/i5/i3, Intel® Pentium® Gold or Intel® Celeron® processor
- Supports WLAN module and antenna (optional)
- 2.5" SATA HDD/SSD
- 2 LAN, 4 USB, 2 COM, 1 HDMI, 1 DisplayPort, and 1 VGA
- IP65-rated aluminum front bezel
- Supports panel mount, VESA mount, and wall mount



▲ Rear view

## Introduction

The GOT318W-521 is a fanless panel PC with 18.5-inch FHD LCD and supports LGA1151 9th/8th gen Intel® Core™ i7/i5/i3, Intel® Pentium® Gold or Intel® Celeron® processor (up to 35W). It also provides M.2 Key E and PCI Express Mini Card slots for add-on devices such like Wi-Fi module for factory automation and oil pipe monitoring system.

### 18.5-inch FHD LCD with PCT or Resistive Touch

The 18.5" FHD touch panel PC supports 500 nits brightness to display contents in FHD resolution. With projected capacitive multi-touch screen or 5-wire resistive touch, users can operate the device directly and friendly. The touch glass surface is up to 3H for anti-scratch purpose.

## Specifications

Front Bezel	IP65 front bezel	
LCD Panel	Display Type	18.5" FHD TFT LCD
	Brightness (cd/m <sup>2</sup> )	500 nits
	Resolution	1920 x 1080
Main System	CPU	LGA1151 9th/8th gen Intel® Core™ i7/i5/i3, Intel® Pentium® Gold or Intel® Celeron® processor (up to 35W)
	Chipset	Intel® H310
	System Memory	1 x 260-pin DDR4-2666/2400 SO-DIMM, up to 32GB
	BIOS	AMI UEFI BIOS
	Storage	1 x mSATA 1 x 2.5" SATA HDD/SSD (7 mm and 9.5 mm height; removable)
	Watchdog Timer	255 levels, 0 to 255 sec.
	Onboard Graphics	Intel® integrated Gfx graphic engine

I/O Connector	1 x 9-pin D-sub Male for RS-232 1 x COM for RS-232/422/485 2 x RJ-45 GbE 2 x USB 3.0, 2 x USB 2.0 1 x Phoenix type connector for DC power input 1 x Switch for power on/off (ATX) 1 x Line-out 1 x HDMI 1 x DisplayPort 1 x VGA 1 x Remote power switch 1 x AT/ATX switch (DC type only) 1 x Grounding hole (DC version)
TPM	TPM 2.0
Expansion Interface	1 x Full-size PCI Express Mini Card slot (PCIe + SATA + USB) 1 x M.2 Key E 2230 (for Wi-Fi)
Touchscreen	Projected capacitive multi-touch 5-wire resistive touch
Power Supply	+12V/+19V/+24VDC 1x Terminal block
Power Consumption	120W
Dimensions	460.8 mm (18.11") (W) x 77 mm (3.04") (D) x 285 mm (11.22") (H)
Packing Dimensions	605 mm (23.81") (W) x 200 mm (7.87") (D) x 505 mm (19.88") (H)
Weight (net/gross)	7.8kg (17.2lb)/10.2kg (22.5lb)
Operating Temperature	0°C to +50°C (+32°F to +122°F)
Relative Humidity	20% to 90% @ +40°C; non-condensing
Operation Vibration	1G, 10 - 500 Hz, random for 2.5" SATA HDD
Certifications	CE, EN 61000-6-2, EN 61000-6-4

## Ordering Information

GOT318W-521-PCT-DC (P/N: E22B318104)	18.5" FHD TFT fanless touch panel computer with LGA1151 9th/8th gen Intel® Core™ i7/i5/i3, Intel® Pentium® Gold or Intel® Celeron® processor (up to 35W), projected capacitive multi-touch screen, and 24 VDC terminal block with small Phoenix connector
GOT318W-521-R-DC (P/N: E22B318105)	18.5" FHD TFT fanless touch panel computer with LGA1151 9th/8th gen Intel® Pentium® Gold or Intel® Celeron® processor (up to 35W), 5-wire resistive touch screen, and 24 VDC terminal block with small Phoenix connector

\* Other configuration by request

\* Specification and certifications may vary based on different requirements

## Packing List

1 x GOT318WL-521  
1 x Phoenix connector  
1 x Panel mount kit