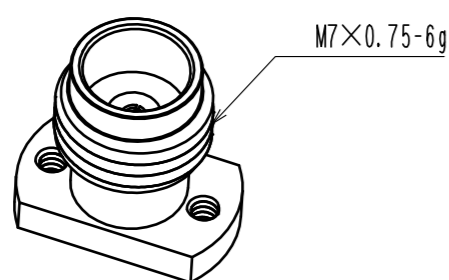
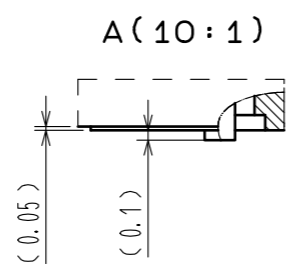
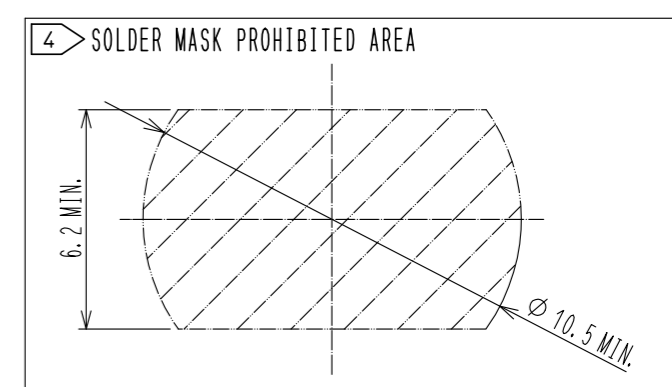
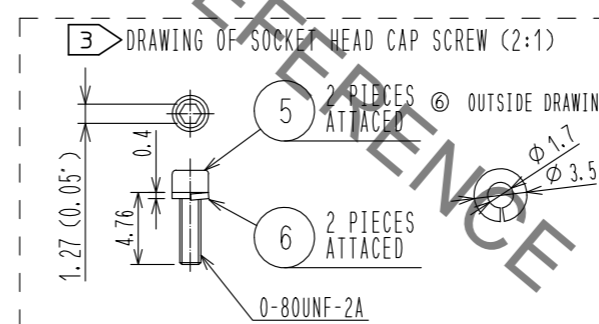
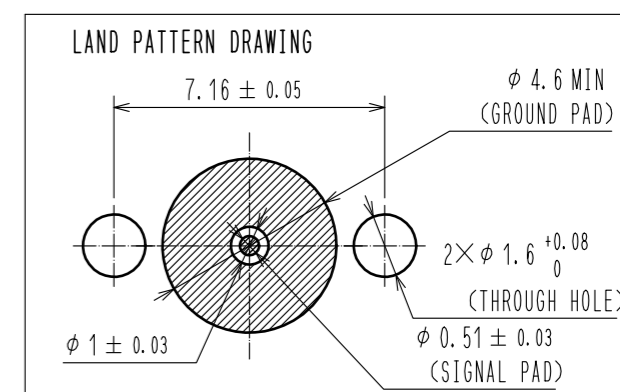
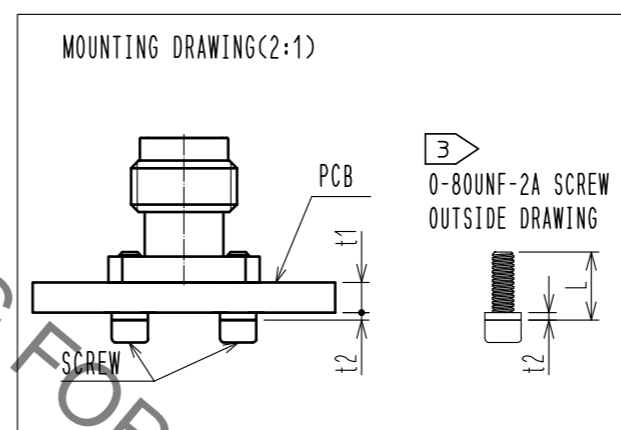
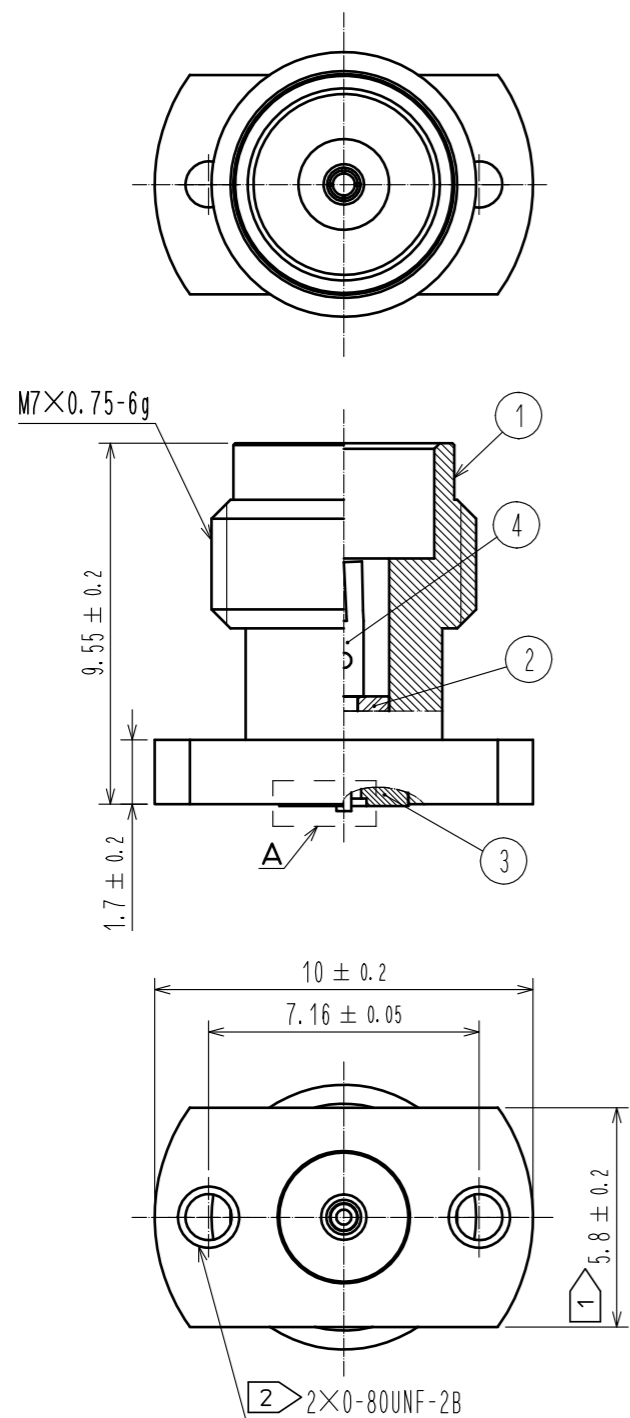


Jan.1.2022 Copyright 2022 HIROSE ELECTRIC CO., LTD. All Rights Reserved.
In case of consideration for using Automotive equipment / device which demand high reliability, kindly contact our sales window correspondents.

42.5Ω
Attachment: Unified HEX socket head cap thread 0-80UNF 3/16inch

- 1 WHEN MATING THE CONNECTOR, PLEASE HOLD THE FRAISE WITH SPANNER NOT TO PLACE STRESS ON PCB BY THE TORQUE.
- 2 0-80UNF-2B SCREW TIGHTENING TORQUE IS 0.09N · m. PLEASE TIGHTEN THE SCREWS EVENLY WHEN MOUNTING THE CONNECTORS TO ENSURE STABLE ELECTRICAL CONTACT.
- 3 PLEASE USE ATTACHED SCREW AND WASHER FOR PCB MOUNTING. ATTACHED SCREW AND WASHER APPLY PCB THICKNESS t1=1.6 TO 2.65mm.
- 4 INDICATES THE AREA THAT SOLDER MASK IS PROHIBITED.
- 5 THIS CONNECTOR SHOULD BE USE FOR TEST PORT ONLY.
- 6 THIS CONNECTOR IS OPTIMIZED FOR IMPEDANCE 42.5Ω SIGNAL LINE.



RoHS COMPLIANT

NO.	MATERIAL	FINISH	REMARKS	NO.	MATERIAL	FINISH	REMARKS
3	STAINLESS STEEL	GOLD PLATING		6	STAINLESS STEEL	(SPRING WASHER)	
2	PTFE			5	STEEL	(0-80UNF-2A SCREW)	
1	STAINLESS STEEL	PASSIVATE		4	BERYLLIUM COPPER	GOLD PLATING	

UNITS	SCALE	COUNT	DESCRIPTION OF REVISIONS	DESIGNED	CHECKED	DATE
mm	5 : 1	1	DIS-D-00003223	DS. YAMAKOSHI	NK. NINOMIYA	18.06.19

APPROVED	CHECKED	DESIGNED	DRAWN	DATE	DRAWING NO.	PART NO.	CODE NO.
KY. SHIMIZU	KY. SHIMIZU	TP. MATSUMOTO	TP. MATSUMOTO	16.06.08	EDC-368164-17-00	H2.4-R-SR2-IN(17)	CL338-0602-0-17