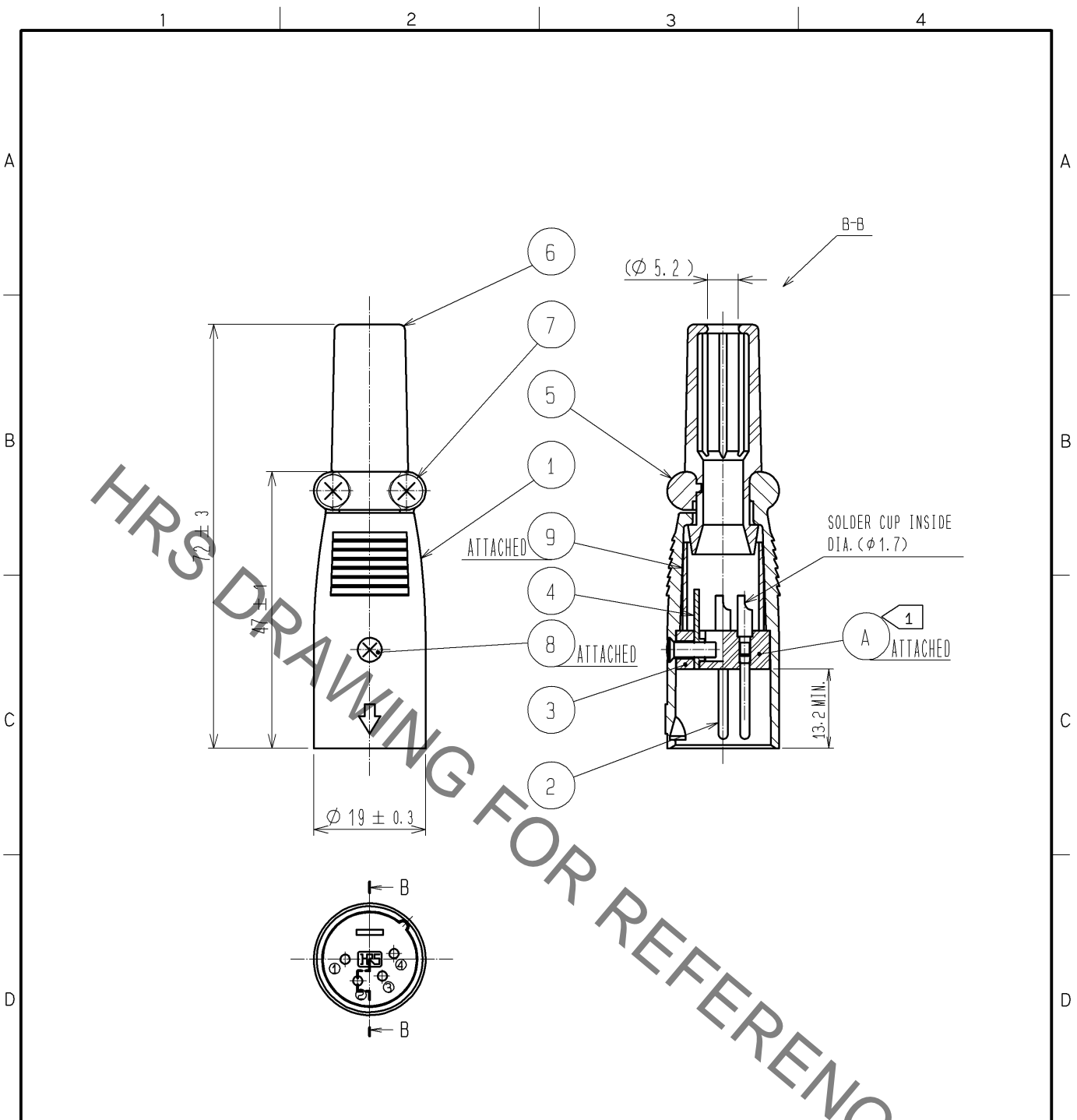


Jun.1.2021 Copyright 2021 HIROSE ELECTRIC CO., LTD. All Rights Reserved.
 In case of consideration for using Automotive equipment / device which demand high reliability, kindly contact our sales window correspondents.



NOTES 1 A SPECIFIES A BLOCK WHICH REF. NO. 2 TO NO. 4 ARE INCORPORATED.
2 THE CABLE PULL AND TWISTING STRENGTH AND OTHER CHARACTERISTICS MAY DIFFER, DEPENDING ON THE CABLE STRUCTURE. PLEASE CONFIRM BEFORE THE USE.

5	ZINC ALLOY	MATTE FINISH NICKEL PLATED					
4	BRASS	SILVER PLATING	9	FLEXIBLE POLYVINYL CHLORIDE (BLACK)			
3	POLYAMIDE	(GRAY)	8	STEEL	NICKEL PLATING M2.6X0.45X8		
2	BRASS	SILVER PLATING 2 μ m min.	7	BRASS	NICKEL PLATING M3X0.5X8		
1	ZINC ALLOY	MATTE FINISH NICKEL PLATED	6	CHLOROPRENE RUBBER (BLACK)			
NO.	MATERIAL	FINISH .	REMARKS	NO.	MATERIAL	FINISH .	REMARKS

UNITS mm	SCALE	COUNT	DESCRIPTION OF REVISIONS	DESIGNED	CHECKED	DATE
	1 : 1		DIS-C-001124	HS. KAWASHIMA	HY. KOBAYASHI	08.12.22

HRS HIROSE ELECTRIC CO., LTD.	APPROVED : EJ. KUNII	07.07.09	DRAWING NO.	EDC4-021270-76
	CHECKED : YH. YAMADA	07.07.06	PART NO.	HA216J-4P(76)
	DESIGNED : DS. MATSUNE	07.07.06	CODE NO.	CL104-0705-0-76
	DRAWN : MK. SATO	07.06.26		