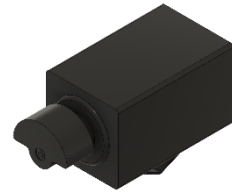




PUIaudio



Data Sheet

HD-EMB1205-3-SC-R

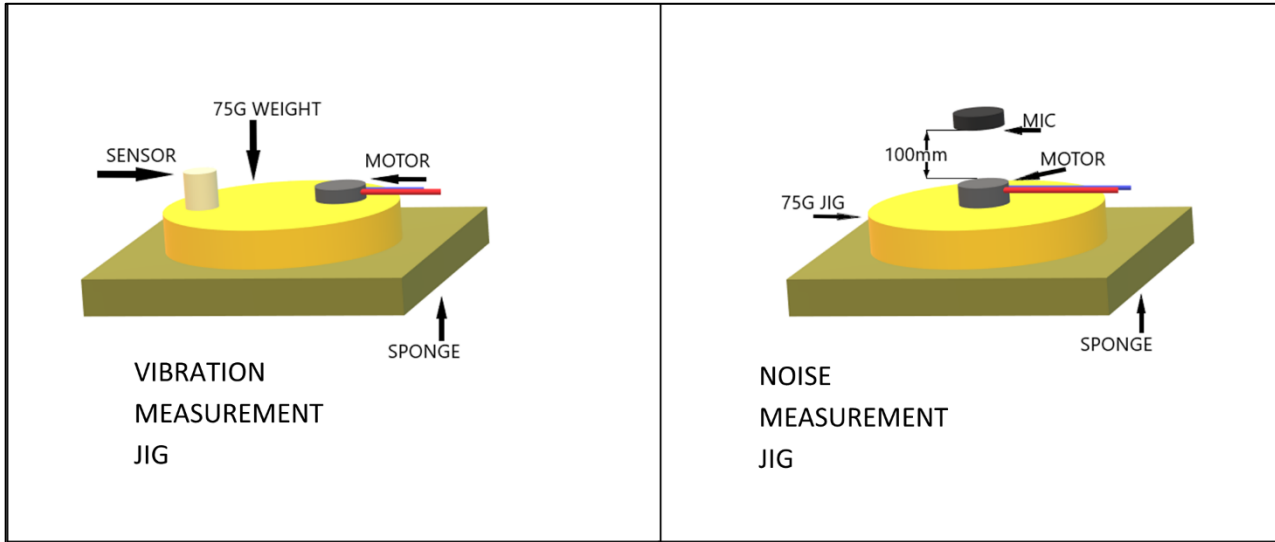
Features:

- Designed to be driven with 3 VDC
- Spring Contacts for easy implementation
- Generates 9,000 RPMs with no more than 50 dBA acoustic noise

Specifications

| Parameters | Values | Units |
|---------------------------|------------|-------|
| Rated Voltage | 3.0 | VDC |
| Starting Voltage | 2.4 | VDC |
| Operating Voltage Range | 2.5 ~ 3.7 | VDC |
| Direction of Rotation | CW/CCW | - |
| Terminal Resistance | 30 ± 10% | Ohms |
| Rated Speed (at 3 VDC) | 9,000 | RPMs |
| Rated Current (at 3 VDC) | 90 | mA |
| Starting Current (Max) | 150 | mA |
| Shaft Pull Strength | 3 | Kg |
| Shaft End Play (Max) | 0.3 | mm |
| Mechanical Noise (Max) | 50 | dBA |
| Housing Material | SPC | - |
| Environmental Compliances | RoHS/REACH | - |
| Weight | 0.8 | Grams |
| Storage Temperature | -40 ~ +85 | °C |
| Operating Temperature | -20 ~ +60 | °C |

Measurement Methods



Reliability Testing

| Type of Test | Test Specifications |
|---------------------------|---|
| High Temperature Test | Temperature: 85°C Test Duration Time: 96 hours |
| Low Temperature Test | Temperature: -40°C Test Duration Time: 96 hours |
| Humidity Test | Temperature: 70°C Room Humidity: 90% Test Duration Time: 96 hours |
| Temperature Cycle Testing | Run for two cycles with the motor driving for 0.5 seconds on 0.5 seconds off: |
| Vibration Test | 3mm deflection at 1000 cycles per minute, for 10 minutes in each axis (X, Y, Z). |
| Drop Test | Weight: Set linear vibration motor to ~100g (including linear vibration motor) weight of block. Drop Height: 150cm Floor Material: Steel Test Axis: ±X, ±Y, ±Z; total 6 faces Test Repetition: 2 time per face (12 total) |
| Load Test | 1,000,000 operating cycles at room temperature Test Cycle: 0.5 seconds on, 0.5 second off |

Acceleration, resistance, rated current and noise must meet specifications after allowing the device to rest for 12 hours after test.