



PUIaudio



Data Sheet

HD-EMB1604-LW26-R

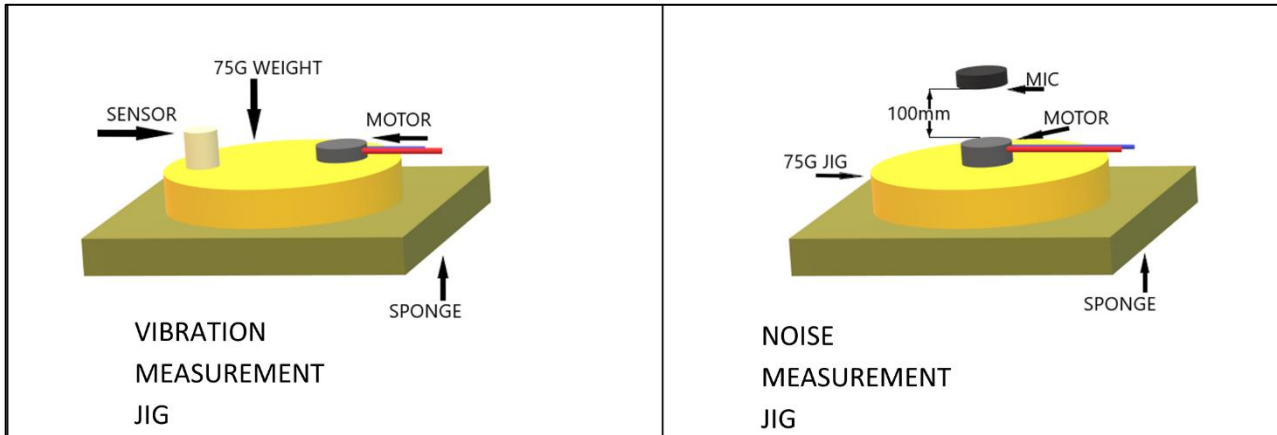
Features:

- Designed to be driven with 1.5 VDC
- 26mm lead wires for easy implementation
- Generates 14,000 RPMs with no more than 50 dBA acoustic noise

Specifications

Parameters	Values	Units
Rated Voltage	1.5	V _{DC}
Starting Voltage	1.2	V _{DC}
Operating Voltage Range	1.2 ~ 1.5	V _{DC}
Direction of Rotation	CW/CCW	-
Terminal Resistance	14 ± 20%	Ohms
Rated Speed (at 3 VDC)	14,000 ± 3,500	RPMs
Rated Current (at 3 VDC)	90	mA
Starting Current (Max)	140	mA
Shaft Pull Strength	3	Kg
Shaft End Play (Max)	0.3	mm
Mechanical Noise (Max)	50	dBA
Housing Material	SPC	-
Environmental Compliances	RoHS/REACH	-
Weight	0.8	Grams
Storage Temperature	-40 ~ +85	°C
Operating Temperature	-20 ~ +60	°C

Measurement Methods



Reliability Testing

Type of Test	Test Specifications
High Temperature Test	Temperature: 85°C Test Duration Time: 96 hours
Low Temperature Test	Temperature: -40°C Test Duration Time: 96 hours
Humidity Test	Temperature: 70°C Room Humidity: 90% Test Duration Time: 96 hours
Temperature Cycle Testing	Run for two cycles with the motor driving for 0.5 seconds on 0.5 seconds off:
Vibration Test	3mm deflection at 1000 cycles per minute, for 10 minutes in each axis (X, Y, Z).
Drop Test	Weight: Set linear vibration motor to ~100g (including linear vibration motor) weight of block. Drop Height: 150cm Floor Material: Steel Test Axis: ±X, ±Y, ±Z; total 6 faces Test Repetition: 2 time per face (12 total)
Load Test	200,000 operating cycles at room temperature Test Cycle: 0.5 seconds on, 0.5 second off

Acceleration, resistance, rated current and noise must meet specifications after allowing the device to rest for 12 hours after test.