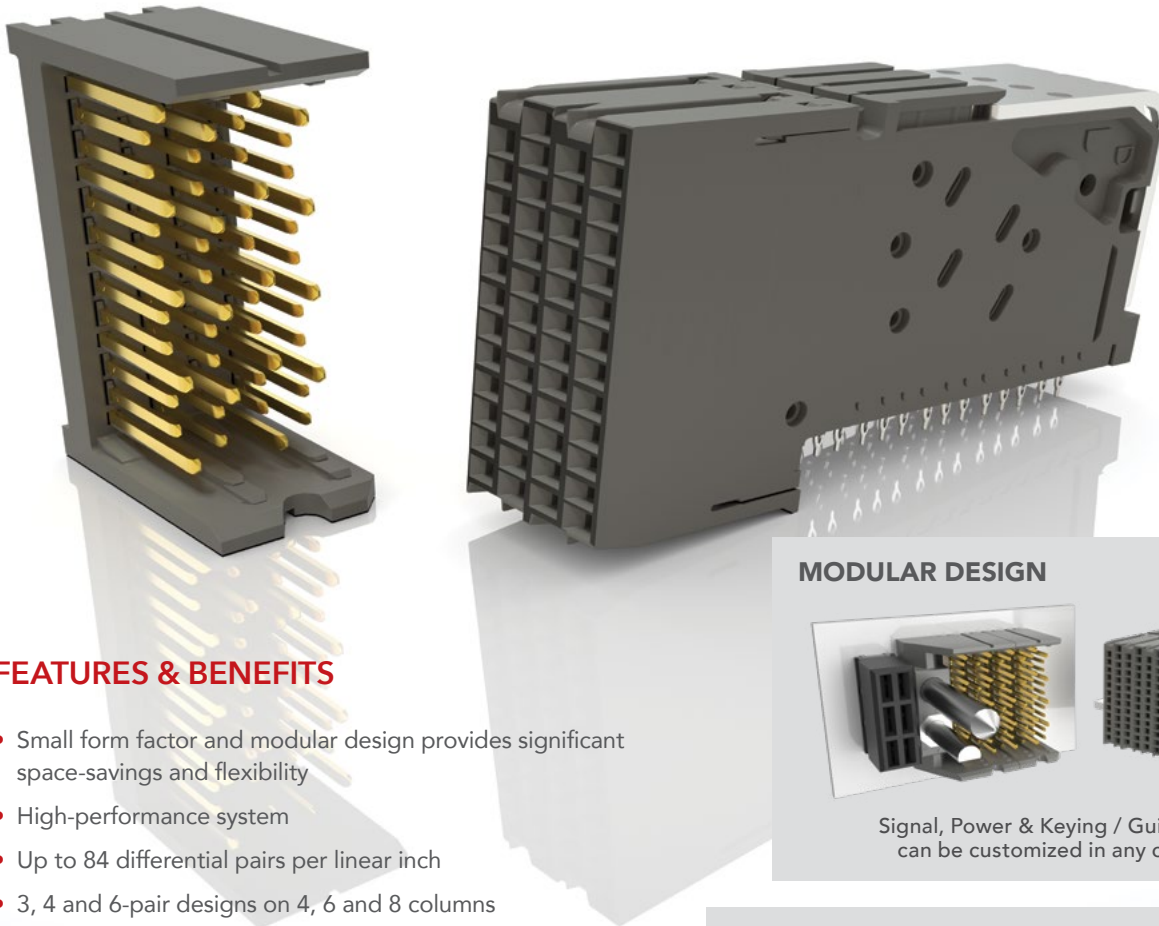


HIGH-DENSITY BACKPLANE HEADERS & SOCKETS

(1.80 mm) .071" PITCH

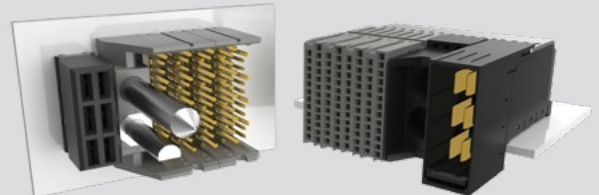
16
G b p s



FEATURES & BENEFITS

- Small form factor and modular design provides significant space-savings and flexibility
- High-performance system
- Up to 84 differential pairs per linear inch
- 3, 4 and 6-pair designs on 4, 6 and 8 columns
- Integrated power, guidance, keying and side walls available
- 85 Ω and 100 Ω options
- Combine any configuration of modules to create one integrated receptacle (BSP Series); corresponding terminal modules are individually mounted to the backplane. Visit samtec.com?BSP or contact HSBP@samtec.com
- Press-fit extraction and insertion tool options; please visit samtec.com/tooling for details

MODULAR DESIGN



Signal, Power & Keying / Guidance options can be customized in any configuration

HIGH-DENSITY, SMALL FORM FACTOR



XCede[®] HD
Up to 84 pairs per linear inch



Traditional Backplane
Up to 76 pairs per linear inch

(Both shown with six 4-pair, 8 column receptacles)

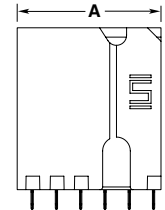
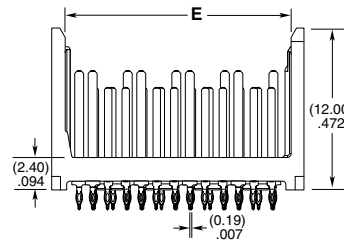
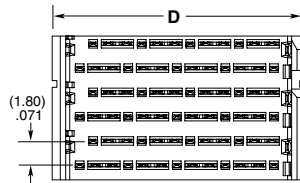
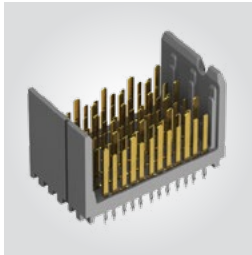
KEY SPECIFICATIONS

| SERIES | INSULATOR MATERIAL | CONTACT MATERIAL | PLATING | OPERATING TEMP RANGE | CURRENT RATING | VOLTAGE RATING |
|-----------|--------------------|---|-------------------------------------|----------------------|-------------------|----------------|
| HDTM/HDTF | LCP | Phosphor Bronze (HDTM) Copper Alloy (HDTF) | Au or Sn over 50 μ" (1.27 μm) Ni | -40 °C to + 105 °C | 1.5 A per contact | 48 VAC |
| HPTS/HPTT | LCP | Copper Alloy | Au or Sn over 50 μ" (1.27 μm) Ni | -40 °C to + 105 °C | 10 A per blade | 48 VAC |

(1.80 mm) .071" PITCH • HIGH-DENSITY BACKPLANE HEADER

| HDTM | PAIRS | NO. OF COLUMNS | TAIL SIZE | S | VT | SIDE WALLS | GUIDANCE | STAGE COMBO | KEYING |
|------|---------------------------------------|------------------|--|---|----|--|--|---|--|
| | -3, -4, -6 =Pairs Per Column | -04, -06, -08 | -1 =(.4495 mm) .0177" Drill -2 =(.5511 mm) .0217" Drill | | | -0 = Open (No Walls) -1 = Left -2 = Right -4 = Left Polarizing with left guidance (-4 Pairs N/A) -5 = Right Polarizing with right guidance (-4 Pairs N/A) | -4 or -5 Polarizing Only; Leave Blank for No Guidance -L = Left Side Guide Pin (-4 Pairs N/A) -R = Right Side Guide Pin (-4 Pairs N/A) | -1 = 3 mm Wipe Signal / 4 mm Wipe Ground -2 = 2 mm Wipe Signal / 4 mm Wipe Ground -3 = 3 mm Wipe Signal / 3 mm Wipe Ground -4 = 2 mm Wipe Signal / 3 mm Wipe Ground -5 = 2 mm Wipe Signal / 2 mm Wipe Ground | -4 or -5 Polarizing Only; Leave Blank for No Keying -A thru -H = Position of Flat on Key (See Table) |

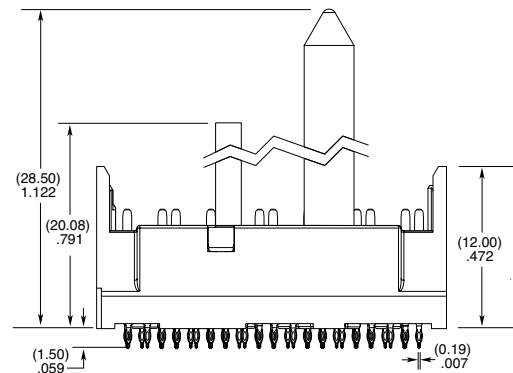
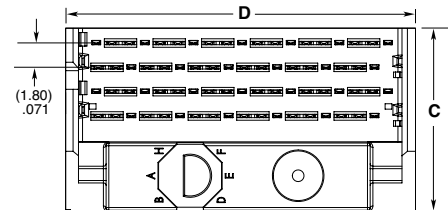
HDTM
Board Mates:
HDTF, BSP



HDTM-4-06-1-S-VT-0-1 SHOWN

| NO. OF COLUMNS | A | | | C | |
|----------------|--------------|--------------|--------------|---------------|----------------|
| | No Walls | Left Wall | Right Wall | Left Polarize | Right Polarize |
| -04 | (7.06) .278 | (8.20) .323 | (8.06) .317 | N/A | N/A |
| -06 | (10.66) .420 | (11.80) .465 | (11.66) .459 | (17.14) .675 | (16.65) .656 |
| -08 | (14.26) .561 | (15.40) .606 | (15.26) .600 | (20.74) .817 | (20.25) .797 |

| PAIRS PER COLUMN | D | E |
|------------------|---------------|--------------|
| | Standard Wall | |
| -03 | (15.10) .594 | (13.15) .518 |
| -04 | (18.70) .736 | (16.75) .659 |
| -06 | (25.90) 1.020 | (23.95) .943 |



HDTM-6-04-X-X-VT-4-L-X-A SHOWN

| KEYING | | | | | | | | |
|---------|----|----|----|----|----|----|----|----|
| -L / -R | -A | -B | -C | -D | -E | -F | -G | -H |
| | | | | | | | | |

Notes:
Some lengths, styles and options are non-standard, non-returnable.
XCede® is a registered trademark of Amphenol.

View complete specifications at: samtec.com?HDTM