

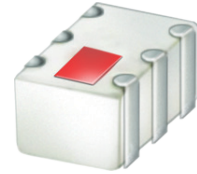
Ceramic High Pass Filter

HFCG-2750+

50Ω 2900 to 16000 MHz

The Big Deal

- Small size 0.079 X 0.049 X 0.037"
- Good Power handling
- Ceramic construction



Generic photo used for illustration purposes only
CASE STYLE: GE0805C-9

Product Overview

HFCG-2750+ is a high pass filter with passband from 2900 MHz to 16000 MHz supporting a variety of applications. This model provides 1 dB typical insertion loss over a wide band due to strategically constructed layout. Housed in a tiny 0805 ceramic form factor with wraparound terminations, the filter is ideal for dense PCB layouts with minimal performance variation due to parasitics.

Key Features

Feature	Advantages
Small size, 0.079 X 0.049 X 0.037"	Accommodates tight space requirements for dense PCB layouts.
Wrap around termination	Provides excellent solderability and easy visual inspection capability.
LTCC construction	Provides a rugged package that is well suited for tough environments including high humidity and high temperature extremes.
Ultra-wide pass band	This filter has a very wide passband from 2.9 GHz to 16 GHz.

Notes

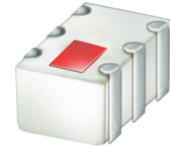
- A. Performance and quality attributes and conditions not expressly stated in this specification document are intended to be excluded and do not form a part of this specification document.
B. Electrical specifications and performance data contained in this specification document are based on Mini-Circuit's applicable established test performance criteria and measurement instructions.
C. The parts covered by this specification document are subject to Mini-Circuits standard limited warranty and terms and conditions (collectively, "Standard Terms"); Purchasers of this part are entitled to the rights and benefits contained therein. For a full statement of the Standard Terms and the exclusive rights and remedies thereunder, please visit Mini-Circuits' website at www.minicircuits.com/MCLStore/terms.jsp



Ceramic High Pass Filter

50Ω 2900 to 16000 MHz

HFCG-2750+



Generic photo used for illustration purposes only
CASE STYLE: GE0805C-9

+RoHS Compliant

The +Suffix identifies RoHS Compliance. See our web site for RoHS Compliance methodologies and qualifications

Features

- Small size
- Temperature stable
- LTCC construction
- Good power handling, 2.5 W

Applications

- Transmitters / Receivers
- Test and measurements
- Military applications
- Telecommunications and broadband wireless systems

Functional Schematic



Electrical Specifications^(1,2) at 25°C

Parameter		F#	Frequency (MHz)	Min.	Typ.	Max.	Unit
Stop Band	Rejection Loss	DC-F1	DC - 1000	30	36	-	dB
		F1-F2	1000 - 2000	28	34	-	dB
	Freq. Cut-Off	F3	2750	-	3.0	-	dB
Pass Band	Insertion Loss	F4-F5	2900 - 3100	-	2.0	-	dB
		F5-F6	3100 - 3500	-	1.4	2.1	dB
		F6-F7	3500 - 14000	-	1.0	1.6	dB
		F7-F8	14000 - 16000	-	1.0	-	dB
	Return Loss	F4-F8	2900 - 16000	-	14	-	dB

1 This component is not intended to act as a DC block. Please consult with Mini-Circuits for further details
2 Measured on Mini-Circuits Characterization Test Board TB-1125+

Maximum Ratings

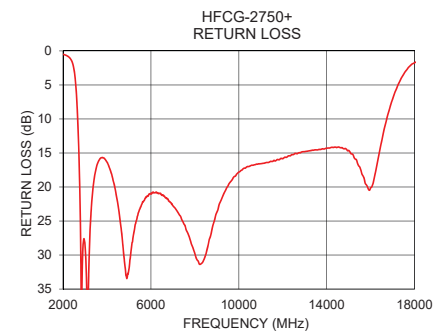
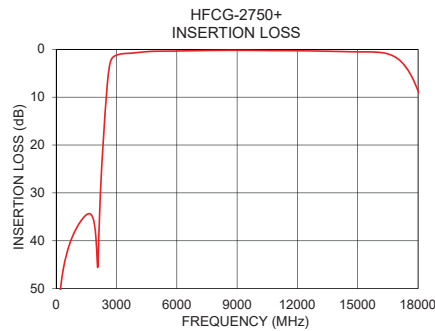
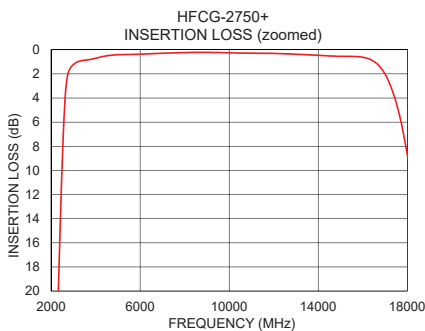
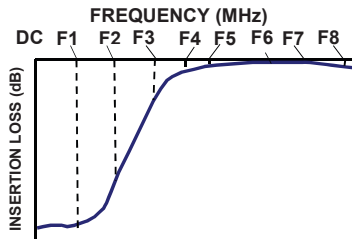
Operating Temperature	-55°C to 100°C
Storage Temperature	-55°C to 100°C
RF Power Input*	2.5 W

*Passband rating, derate linearly to 1.25 W at 100°C ambient
Permanent damage may occur if any of these limits are exceeded.

Typical Performance Data at 25°C

Frequency (MHz)	Insertion Loss (dB)	Return Loss (dB)
10	70.91	0.11
100	56.20	0.13
500	43.01	0.26
1000	37.43	0.29
2000	40.88	0.49
2190	30.96	0.73
2320	20.54	1.08
2670	3.11	10.45
2700	2.61	13.08
2750	2.07	18.90
2900	1.42	29.13
3000	1.23	28.64
3100	1.09	38.88
3500	0.87	17.34
4000	0.71	16.34
10000	0.25	17.81
14000	0.46	14.30
16000	0.62	20.12
17500	4.36	3.43
18000	8.66	1.72

Typical Frequency Response



Notes

- A. Performance and quality attributes and conditions not expressly stated in this specification document are intended to be excluded and do not form a part of this specification document.
B. Electrical specifications and performance data contained in this specification document are based on Mini-Circuit's applicable established test performance criteria and measurement instructions.
C. The parts covered by this specification document are subject to Mini-Circuits standard limited warranty and terms and conditions (collectively, "Standard Terms"); Purchasers of this part are entitled to the rights and benefits contained therein. For a full statement of the Standard Terms and the exclusive rights and remedies thereunder, please visit Mini-Circuits' website at www.minicircuits.com/MCLStore/terms.jsp



www.minicircuits.com P.O. Box 350166, Brooklyn, NY 11235-0003 (718) 934-4500 sales@minicircuits.com

REV. A
ECO-004609
HFCG-2750+
EDU3686
URJ
201020
Page 2 of 3