

NOTES: UNLESS OTHERWISE SPECIFIED  
 1. MATERIAL SPECIFICATIONS:  
 BODY: BERYLLIUM COPPER  
 CONTACT: PHOSPHOR BRONZE  
 INSULATOR: PTFE  
 SPRING: STEEL  
 GASKET: SI-RUBBER  
 ALL OTHER METAL PARTS: BRASS

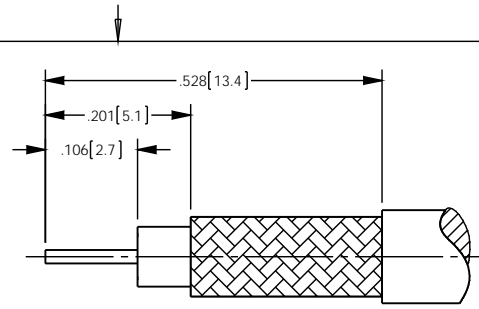
2. FINISH SPECIFICATIONS:  
 CONTACT: GOLD  
 ALL OTHER METAL PARTS: NICKEL

3. ELECTRICAL SPECIFICATIONS:  
 IMPEDANCE: 75 OHMS  
 FREQUENCY RANGE: DC - 12 GHz  
 RETURN LOSS: -30 dB MAX TO 3 GHz  
 -20 dB MAX TO 6 GHz

4. COMPLIANT TO 3G/6G/12G SDI SMPTE REQUIREMENTS.

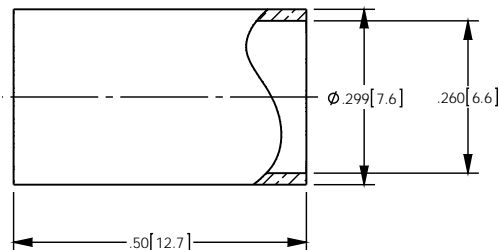
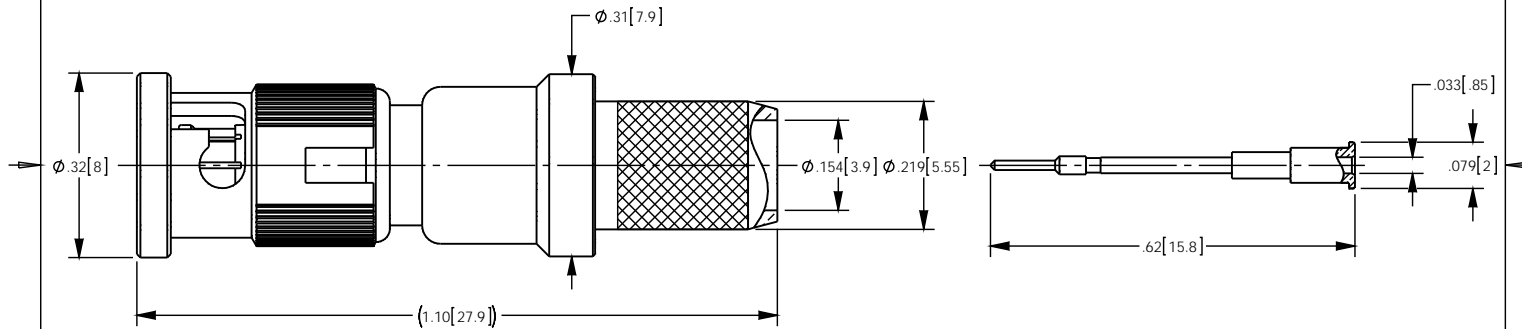
5. CRIMP CONTACT TO .042[1.06] SQ AND FERRULE TO .255[6.48] HEX.

6. CONTACT AND FERRULE SHIPPED LOOSE.



RECOMMENDED CABLE STRIPPING DIM'S

REV	DESCRIPTION	BY DATE	APPD
A	ER057798	JL 04/21/15	VA



CATALOG P/N: HHD1505A

PER ASME Y14.5M-1994 UNLESS OTHERWISE SPECIFIED, DIMENSIONS ARE IN INCHES (MM) TOLERANCES: DECIMAL: XX [XX] ± .01 [0.3] XXX [XXX] ± .005 [0.13] XXXX [XXXX] ± .000X		 by WINCHESTER Winchester Electronics Corporation 199 Park Road Ext Suite 104 Middlebury, Connecticut, 06762	
CUSTOMER SALES DRAWING		THIRD ANGLE 	HDBNC CRIMP PLUG FOR BELDEN 1505A CABLE OR EQUIVALENT (RoHS COMPLIANT)
DRAWN: JL DATE: 04/21/2015	APPROVED: MAR DATE: 04/21/2015	A	SDHHD1505A SHIT: 1 OF: 1 REV: 1