

NOTES: UNLESS OTHERWISE SPECIFIED  
 1. MATERIAL SPECIFICATIONS:  
 BODY: BERYLLIUM COPPER  
 CONTACT: PHOSPHOR BRONZE  
 INSULATOR: PTFE  
 SPRING: STEEL  
 GASKET: SI-RUBBER  
 FERRULE: COPPER  
 ALL OTHER METAL PARTS: BRASS

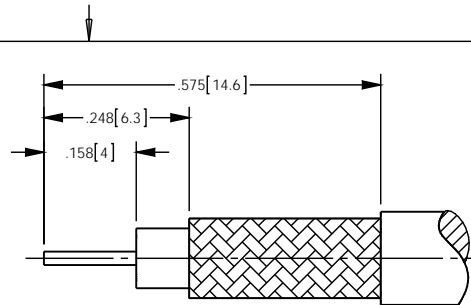
2. FINISH SPECIFICATIONS:  
 CONTACT: GOLD  
 ALL OTHER METAL PARTS: NICKEL

3. ELECTRICAL SPECIFICATIONS:  
 IMPEDANCE: 75 OHMS  
 FREQUENCY RANGE: DC - 12 GHz  
 RETURN LOSS: -30 dB MAX TO 3 GHz  
 -20 dB MAX TO 6 GHz

4. COMPLIANT TO 3G/6G/12G SDI SMPTE REQUIREMENTS.

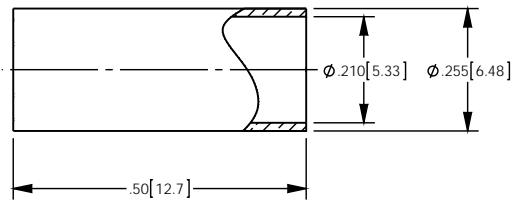
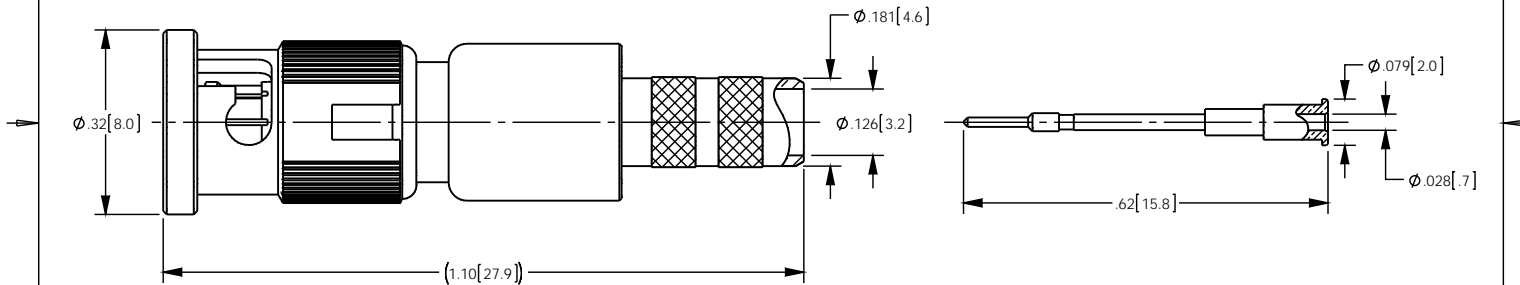
5. CRIMP CONTACT TO .042[1.06] SQ AND FERRULE TO .213[5.41] HEX.

5. CONTACT AND FERRULE SHIPPED LOOSE.



RECOMMENDED CABLE STRIPPING DIM'S

REV	DESCRIPTION	BY DATE	APPD
A	ER057798	JL 04/21/15	VA



CATALOG P/N: HHD360IM

PER ASME Y14.5M-1994 UNLESS OTHERWISE SPECIFIED, DIMENSIONS ARE IN INCHES (MM) TOLERANCES: DECIMAL: .XX [XX] ± .01 [0.3] .XXX [XXX] ± .005 [0.13] .XXXX [XXXX] ± .000X		<b>KINGS</b> by WINCHESTER Winchester Electronics Corporation 199 Park Road Ext Suite 104 Middlebury, Connecticut, 06762	
CUSTOMER SALES DRAWING		THIRD ANGLE	
HDBNC CRIMP PLUG FOR 360IM CABLE OR EQUIVALENT (RoHS COMPLIANT)		SCALE: 4:1	
DRAWN	DATE	APPROVED	DATE
JL	04/21/2015	MAR	04/21/2016
APPROVED	DATE	APPROVED	DATE
XXX	XX/XX/XX	XXX	XX/XX/XX
<b>A</b>		SDHHD360IM	SHIT OF REV 1 1 A