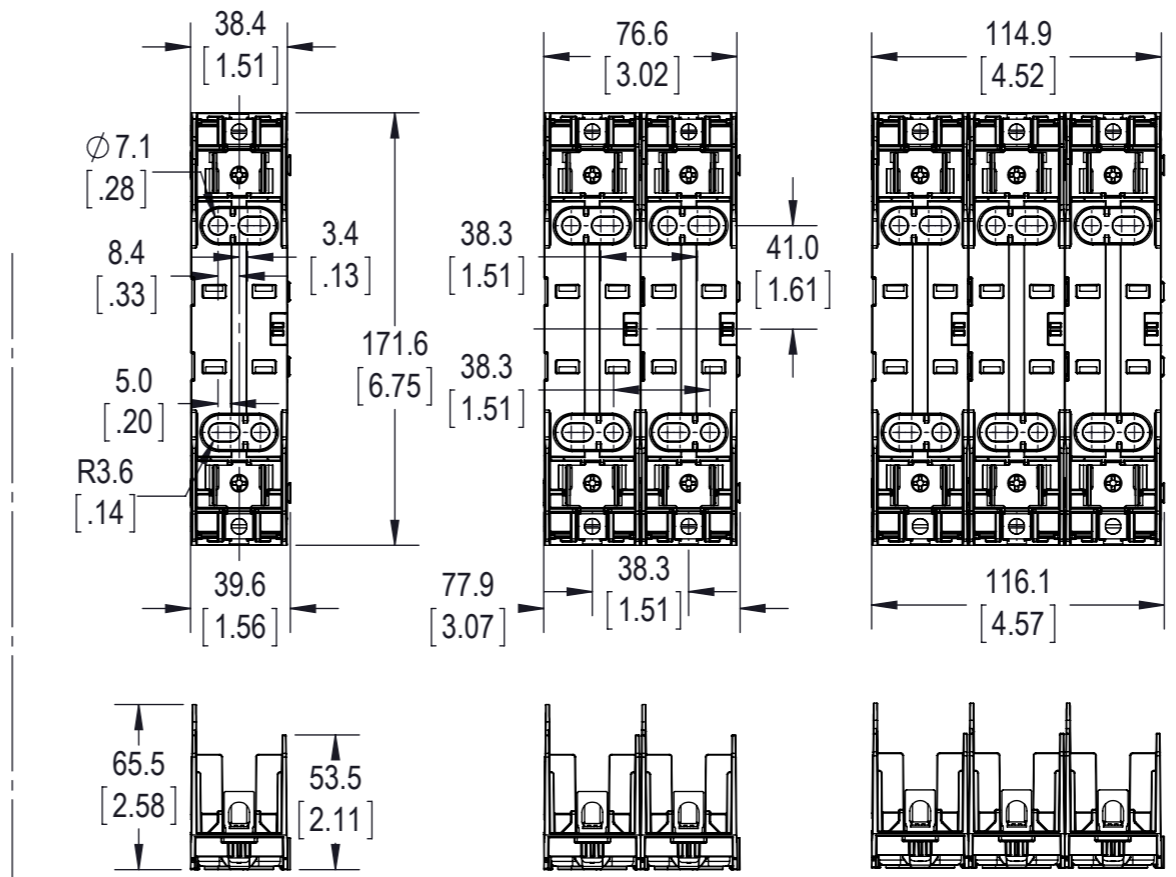
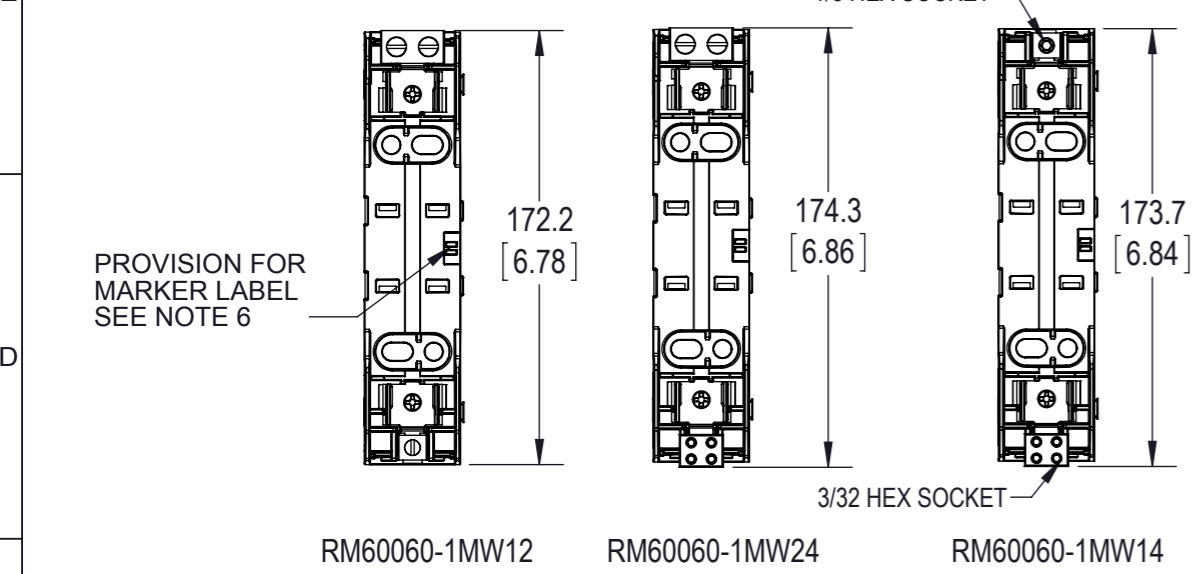
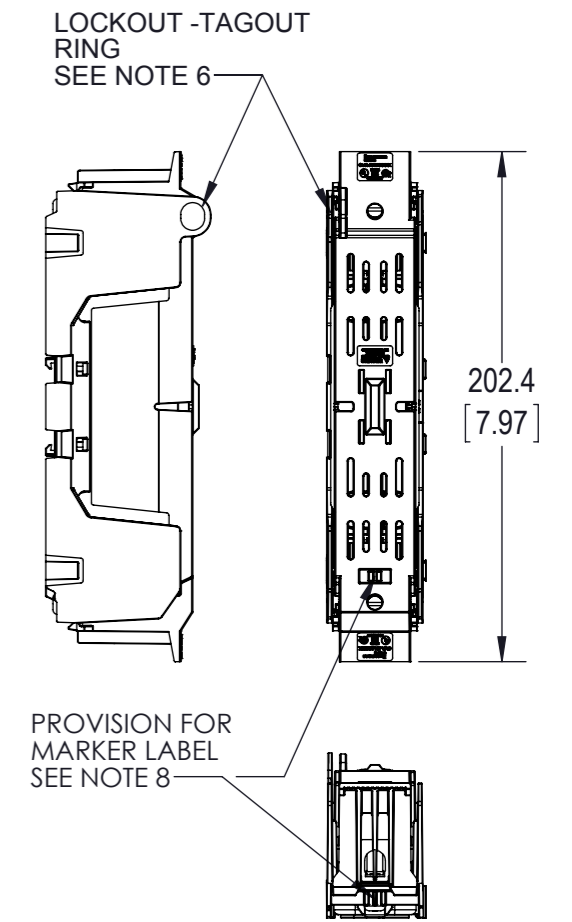
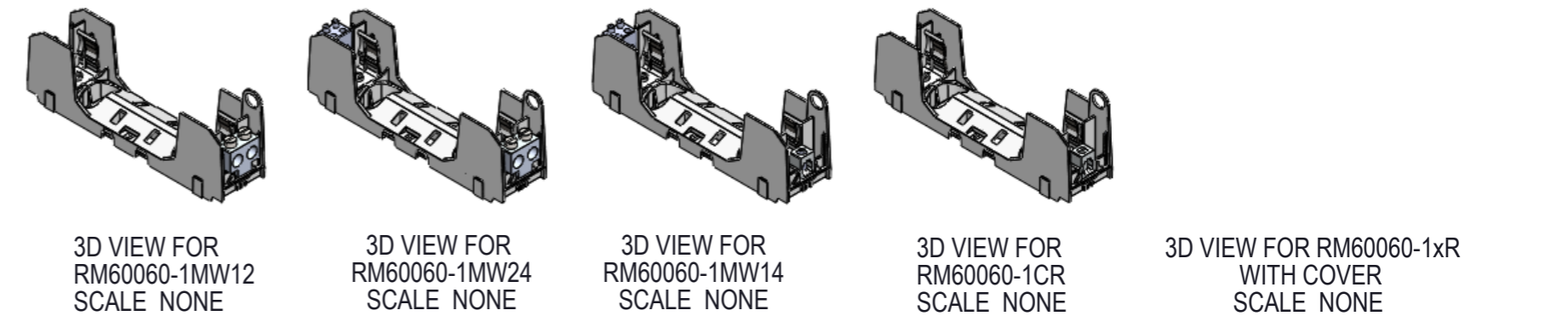


| CATALOG NO.   | TERMINAL TYPE         | IP20 FINGER SAFE COVERS |               | NO. OF POLES |
|---------------|-----------------------|-------------------------|---------------|--------------|
|               |                       | W/O INDICATION          | INDICATION    |              |
| RM60060-1CR*  | BOX LUG 1 PORT        |                         |               | 1            |
| RM60060-2CR*  | BOX LUG 1 PORT        |                         |               | 2            |
| RM60060-3CR*  | BOX LUG 1 PORT        |                         |               | 3            |
| RM60060-1MW14 | BOX LUG - 1 TO 4 PORT |                         |               | 1            |
| RM60060-2MW14 | BOX LUG - 1 TO 4 PORT |                         |               | 2            |
| RM60060-3MW14 | BOX LUG - 1 TO 4 PORT |                         |               | 3            |
| RM60060-1MW12 | BOX LUG - 1 TO 2 PORT | CVR-RH-60060            | CVRI-RH-60060 | 1            |
| RM60060-2MW12 | BOX LUG - 1 TO 2 PORT |                         |               | 2            |
| RM60060-3MW12 | BOX LUG - 1 TO 2 PORT |                         |               | 3            |
| RM60060-1MW24 | BOX LUG - 2 TO 4 PORT |                         |               | 1            |
| RM60060-2MW24 | BOX LUG - 2 TO 4 PORT |                         |               | 2            |
| RM60060-3MW24 | BOX LUG - 2 TO 4 PORT |                         |               | 3            |

\* -CHR ALSO AVAILABLE; SEE NOTE 10



1-POLE RM60060-1CR SHOWN      2-POLE RM60060-2CR SHOWN      3-POLE RM60060-3CR SHOWN      RM60060-1CR SHOWN WITH COVER



- NOTES:
- VOLTAGE RATING: 600V
  - AMPERAGE: 60A
  - WITHSTAND RATING: CLASS R = 200kA; CLASS H = 10kA
  - WIRE: -CR/-MW12/MW14 CU/AL 75C  
-MW24 CU/AL 75/90C
  - 1 PORT WIRE RANGE: (1) 2 - 14 AWG CU  
2-3: 50 lb-in (5.6 Nm)  
4-6, 45 lb-in (5.1 Nm)  
8, 40 lb-in (4.5 Nm)  
10-14, 35 lb-in (4.0 Nm)  
(2) 12-14, 50 lb-in (5.6 Nm)  
(1) 2 - 8 AWG AL  
2-3: 50 lb-in (5.6 Nm)  
4-6, 45 lb-in (5.1 Nm)  
8, 40 lb-in (4.5 Nm)
  - 4 PORT WIRE RANGE: (1) 8-14 AWG CU  
8 AWG 3.4 Nm (30 in-lb)  
14-10 2.8 Nm (25 in-lb)  
(2) 12-14 AWG CU  
12-14 3.4 Nm (30 in-lb)  
(1) 8-10 AWG AL  
8 Str/10 Sol: 3.4 Nm (30 in-lb)
  - 2 PORT WIRE RANGE: (1) CU 2-14, AL 2-8  
2 - 4 AWG 5.6 Nm (50 lb-in)  
6-10 AWG 4.5 Nm (40 lb-in)  
12-14 AWG 1.7 Nm (15 lb-in)
  - USE 4MM DIA. CABLE LOCK OR 1/4 INCH DIA. HASP PADLOCK.
  - RECOMMEND USING DIN-RAIL END STOPS FOR DIN RAIL MOUNTED APPLICATIONS  
BUSSMANN PART NUMBERS BRKT-ND OR BRKT-NDSCREW2
  - USE BUSMANN MAKER LABEL TM26CB
  - ALL DIMENSIONS ARE TYPICAL UNLESS OTHERWISE INDICATED
  - CHR IS IDENTICAL TO THE -CR EXCEPT WITH A 1/8 INCH HEX WIRE CONNECTOR SCREW

EATON CORPORATION - CONFIDENTIAL AND PROPRIETARY  
NOTICE TO PERSONS RECEIVING THIS DOCUMENT AND/OR TECHNICAL INFORMATION

THIS DRAWING IS AN UNCONTROLLED COPY IF PRINTED OR SENT ELECTRONICALLY. DO NOT SCALE DRAWING

GENERAL DRAWING PRACTICES IN ACCORDANCE WITH ASME - Y14.100-2004 DIMENSIONS AND TOLERANCES IN ACCORDANCE WITH ASME - Y14.5M-1994 UNLESS OTHERWISE SPECIFIED DIMENSIONS ARE IN MILLIMETERS

UNLESS OTHERWISE SPECIFIED TOLERANCES TO BE MILLIMETERS ± 0.13 mm ANGULAR ± 1°

**CUSTOMER PRINT**  
THIRD ANGLE PROJECTION

THIS DOCUMENT, INCLUDING THE DRAWING AND INFORMATION CONTAINED THEREON, IS CONFIDENTIAL AND IS THE EXCLUSIVE PROPERTY OF EATON CORPORATION AND IS LOANED TO YOU BY EATON CORPORATION. IT IS NOT TO BE REPRODUCED, COPIED, OR IN ANY MANNER DISCLOSED TO ANY OTHER PERSON OR ENTITY WITHOUT THE PRIOR WRITTEN CONSENT OF EATON CORPORATION. THIS NOTICE SHALL GOVERN THE STATUS OF THIS DOCUMENT.

© 2012 Eaton Corporation. All Rights Reserved.

**EATON** BUSSMANN SERIES

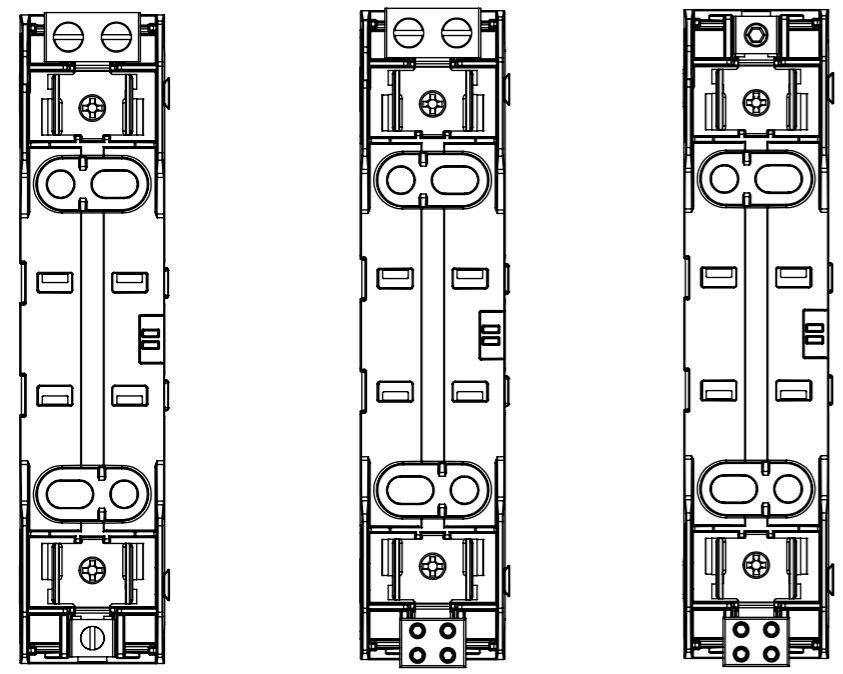
TITLE: **600V / 60AMP CLASS R & H FUSE BLOCK**

SIZE: **A3** DWG NO.: **RM60060-HM60060-CP** REV: **B**

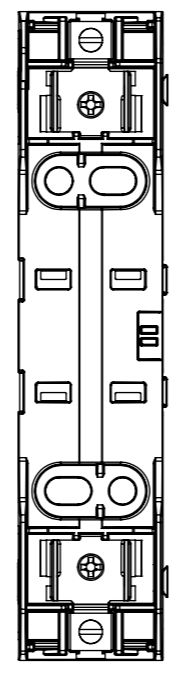
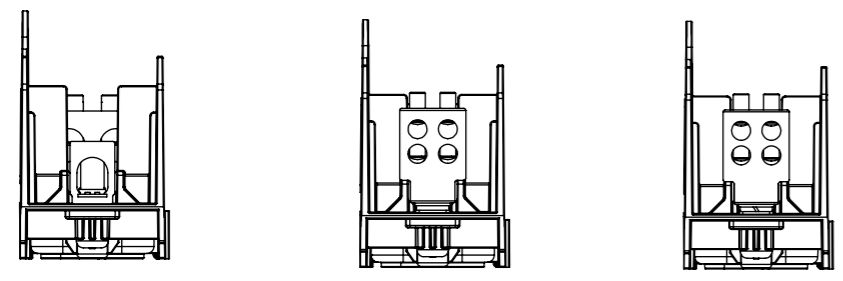
SCALE: 1:3 SHEET 1 OF 3

| CATALOG NO.   | TERMINAL TYPE         | IP20 FINGER SAFE COVERS |               | NO. OF POLES |
|---------------|-----------------------|-------------------------|---------------|--------------|
|               |                       | W/O INDICATION          | INDICATION    |              |
| HM60060-1CR*  | BOX LUG 1 PORT        | CVR-RH-60060            | CVRI-RH-60060 | 1            |
| HM60060-2CR*  | BOX LUG 1 PORT        |                         |               | 2            |
| HM60060-3CR*  | BOX LUG 1 PORT        |                         |               | 3            |
| HM60060-1MW14 | BOX LUG - 1 TO 4 PORT |                         |               | 1            |
| HM60060-2MW14 | BOX LUG - 1 TO 4 PORT |                         |               | 2            |
| HM60060-3MW14 | BOX LUG - 1 TO 4 PORT |                         |               | 3            |
| HM60060-1MW12 | BOX LUG - 1 TO 2 PORT |                         |               | 1            |
| HM60060-2MW12 | BOX LUG - 1 TO 2 PORT |                         |               | 2            |
| HM60060-3MW12 | BOX LUG - 1 TO 2 PORT |                         |               | 3            |
| HM60060-1MW24 | BOX LUG - 2 TO 4 PORT |                         |               | 1            |
| HM60060-2MW24 | BOX LUG - 2 TO 4 PORT |                         |               | 2            |
| HM60060-3MW24 | BOX LUG - 2 TO 4 PORT |                         |               | 3            |

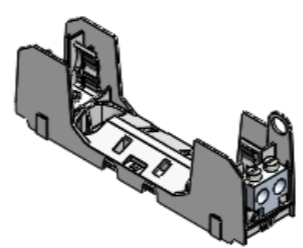
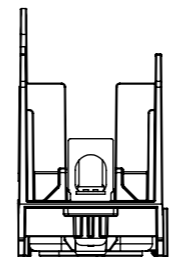
\* -CHR ALSO AVAILABLE; SEE NOTE 10



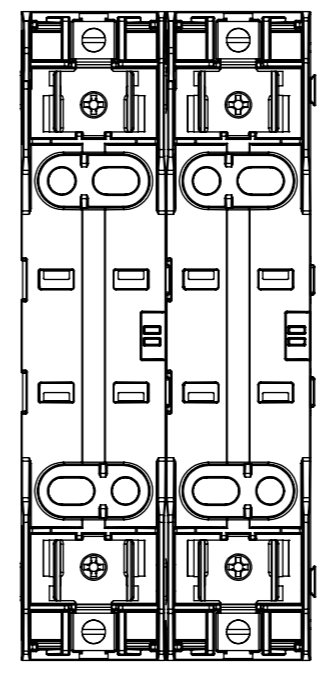
HM60060-1MW12      HM60060-1MW24      HM60060-1MW14



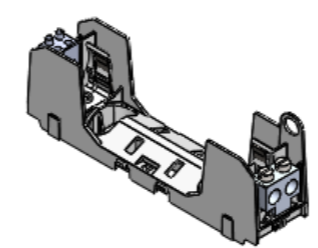
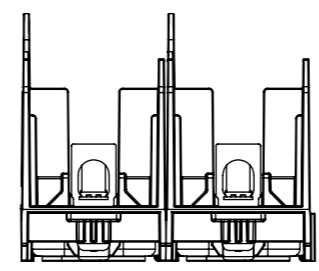
1-POLE  
HM60060-1CR SHOWN



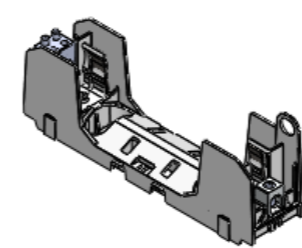
3D VIEW FOR  
HM60060-1MW12  
SCALE NONE



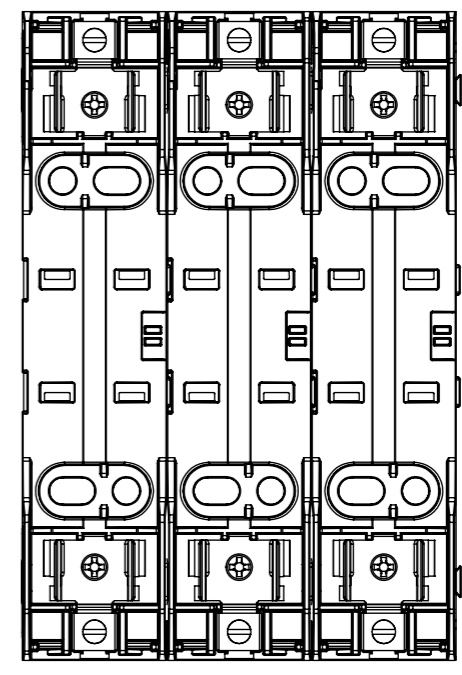
2-POLE  
HM60060-2CR SHOWN



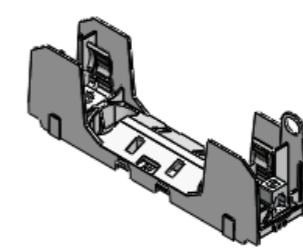
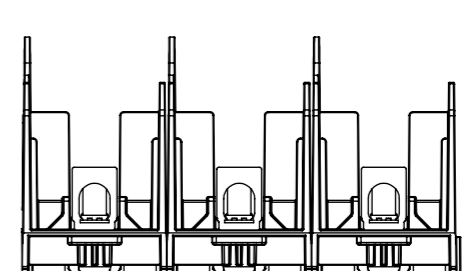
3D VIEW FOR  
HM60060-1MW24  
SCALE NONE



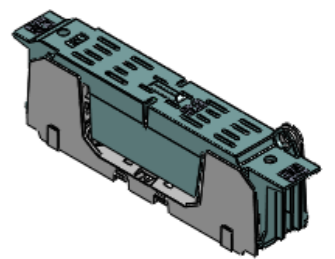
3D VIEW FOR  
HM60060-1MW14  
SCALE NONE



3-POLE  
HM60060-3CR SHOWN



3D VIEW FOR  
HM60060-1CR  
SCALE NONE



3D VIEW FOR HM60060-1xR  
WITH COVER  
SCALE NONE

**EATON** BUSSMANN SERIES

TITLE: **600V / 60AMP CLASS R & H FUSE BLOCK**

SIZE: **A3**      DWG NO.: **RM60060-HM60060-CP**      REV: **B**

SCALE: 1:2      SHEET 2 OF 3

8.A3\_BUSS\_M60\_CERBL\_REV\_A