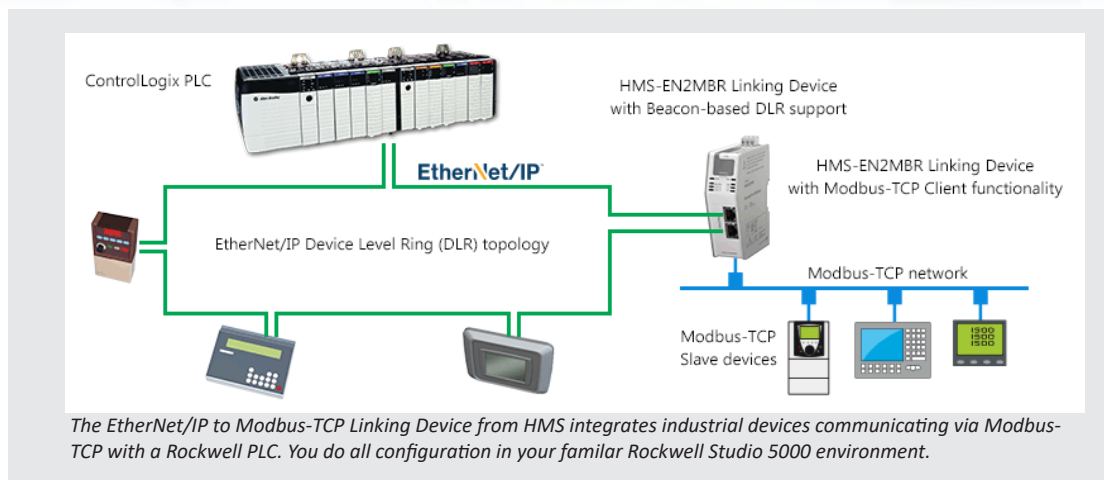
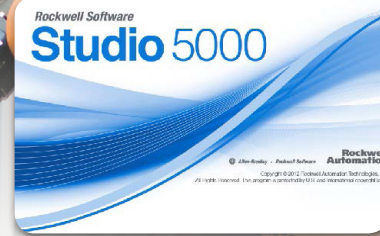


The EtherNet/IP to Modbus-TCP Linking Device allows you to connect any Modbus-TCP device or system to your ControlLogix™ and CompactLogix™ PLC from Rockwell Automation. The stand-alone Linking Device is less expensive than an in-chassis-based solution, and has even better integration to Studio 5000® from Rockwell Automation.



In short:

EtherNet/IP Adapter Class product which is tightly integrated to Rockwell Studio5000 allowing you to connect Modbus-TCP devices to Rockwell PLCs.

Catalog number:

HMS-EN2MB-R

The EtherNet/IP to Modbus-TCP Linking Device will:

- Minimize costs when connecting Modbus-TCP server devices (slaves) to your PLC. More cost-efficient than an in-chassis solution.
- Allow you to easily retrofit existing Modbus-TCP devices.
- Allow support for “Big data” — up to 8 KB of I/O data.
- Speed up configuration — Automated process inside Rockwell Studio5000.

Technical highlights

- Custom Add-On Profile: simplifies configuration and reduces commissioning time, dynamically generates data structures. No need for any ladder logic or Add On Instructions.
- Connects up to 64 servers (slaves), connections and transactions.
- Does not affect backplane performance (PLC execution time), even when large amount of data is transferred to the PLC.
- EtherNet/IP Adapter Class product supporting Beacon-based DLR.
- Automatically generates named and structured Studio 5000 controller tags based on the configuration — no need for add-on instructions or creating alias tags.
- ODVA, CE and UL certifications (ATEX and Haz.Loc. certifications pending)

Integrated into Studio5000



All network and device configuration is done within Studio 5000.

See how it works at www.encompass.hms-networks.com

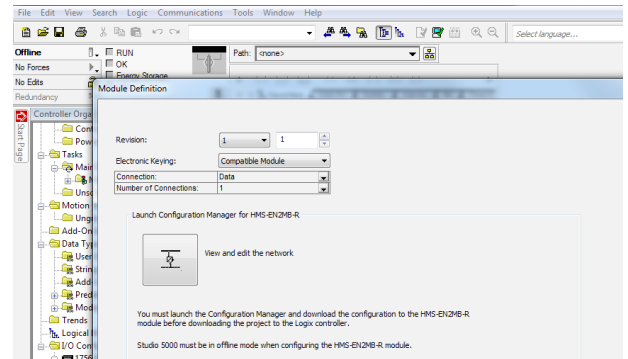
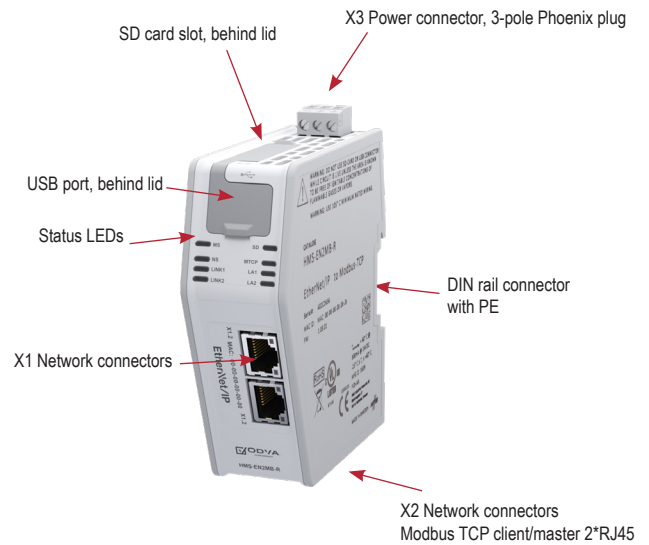


HMS provides a full 3 year product guarantee



TECHNICAL SPECIFICATIONS

| EtherNet/IP to Modbus-TCP Linking Device | | |
|---|---|--------------------------------|
| Max amount of slaves | 64 | |
| Network connector | Two RJ45 for Modbus-TCP and two RJ45 for EtherNet/IP | |
| Baud rate | 10/100 Mbit/s | |
| I/O data | 4 KB Input and 4 KB Output | |
| Supported Modbus-TCP functions | 1, 2, 3, 4, 5, 6, 15, 16, 23 | |
| Technical Details | | Standard |
| Weight | 160 g, 0,35 lb | |
| Dimensions (L*W*H) | 110*35*101 mm, 4,33*1,38*3,98" | |
| Protection class | IP20, NEMA rating 1 | |
| Enclosure material | PC ABS, UL 94 VO | |
| Installation position | Vertical | |
| Mounting | DIN rail (35*7,5/15) or Wall Mount | EN 50022 |
| Certifications | | |
| UL | Yes | |
| Hazardous Locations | Pending | |
| ATEX | Pending | |
| CE | Yes | |
| ODVA | Yes | |
| Electrical Characteristics | | |
| Power | 24 VDC +/- 10 % | |
| Current consumption | Typical 150 mA @ 24 V | |
| Hardware Characteristics | | |
| Reverse voltage protection | Yes | |
| Short circuit protection | Yes | |
| Galvanic isolation on subnetwork | Yes | |
| Environmental Characteristics | | |
| Operating temp | -25 to 70 °C, -13 to 158 °F | IEC 60068-2-1 IEC 60068-2-2 |
| Storage temp | -40 to 85 °C, -40 to 185 °F | IEC 60068-2-1 IEC 60068-2-2 |
| Relative Humidity | 5-95 % non condensing | IEC 60068-2-30 |
| Installation altitude | Up to 2 000 m | |
| Immunity and Emission for Industrial Environment | | |
| Electrostatic discharge | +/- 4 kV | EN 61000-4-2 |
| Electromagnetic RF fields | 10 V/m 80 MHz - 1 GHz 3 V/m 1,4 GHz - 2,0 GHz 1 V/m 2,0 GHz - 2,7 GHz | EN 61000-4-3 |
| Fast Transients | +/- 1 kV | EN 61000-4-4 |
| Surge protection | +/- 1 kV | EN 61000-4-5 |
| RF conducted interference | 10 Vrms | EN 61000-4-6 |
| Emission (at 10 m) | 40 dB 30 MHz - 230 MHz 47 dB 30 MHz - 1 GHz | EN 55016-2-3 |
| Insulation, transient voltage (not for personal safety) | | |
| Power to PE | 1 500 V | EN 60950-1 |
| Power to X1 | 2 500 V | EN 60950-1 |
| Power to X2 | 1 500 V | EN 60950-1 |
| X2 to PE | 500 V | EN 60950-1 |
| X2 Shields to PE | 500 V | EN 60950-1 |
| X2 to X2 Shields | 500 V | EN 60950-1 |
| X2.1 to X2.2 | 500 V | EN 60950-1 |
| Included components | | |
| Installation guide | | |



The configuration is integrated into Rockwell Studio5000. With a click of the mouse, you start the configurator for the Linking Device.

HMS Industrial Networks – Worldwide

HMS - Sweden (HQ)

Tel : +46 35 17 29 00 (Halmstad HQ)
Tel: +46 35 17 29 24 (Västerås office)
E-mail: sales@hms-networks.com

HMS - Germany

Tel: +49 721 989777-000
E-mail: ge-sales@hms-networks.com

HMS - Japan

Tel: +81 45 478 5340
E-mail: jp-sales@hms-networks.com

HMS - United States

Tel: +1 312 829 0601
E-mail: us-sales@hms-networks.com

HMS - China

Tel : +86 010 8532 3183
E-mail: cn-sales@hms-networks.com

HMS - India

Tel: +91 83800 66578
E-mail: in-sales@hms-networks.com

HMS - Switzerland

Tel: +41 61 511342-0
E-mail: sales@hms-networks.ch

HMS - France

Tel: +33 368 368 034 (Mulhouse office)
E-mail: fr-sales@hms-networks.com

HMS - Italy

Tel : +39 039 59662 27
E-mail: it-sales@hms-networks.com

HMS - UK

Tel: +44 1926 405599
E-mail: uk-sales@hms-networks.com

Anybus® is a registered trademark of HMS Industrial Networks AB, Sweden, USA, Germany and other countries. Other marks and words belong to their respective companies. All other product or service names mentioned in this document are trademarks of their respective companies.

Part No: MMA432 Version 3 03/2019 - © HMS Industrial Networks - All rights reserved - HMS reserves the right to make modifications without prior notice.

