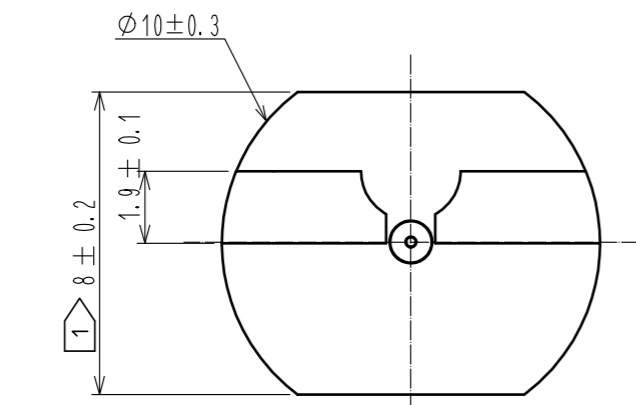
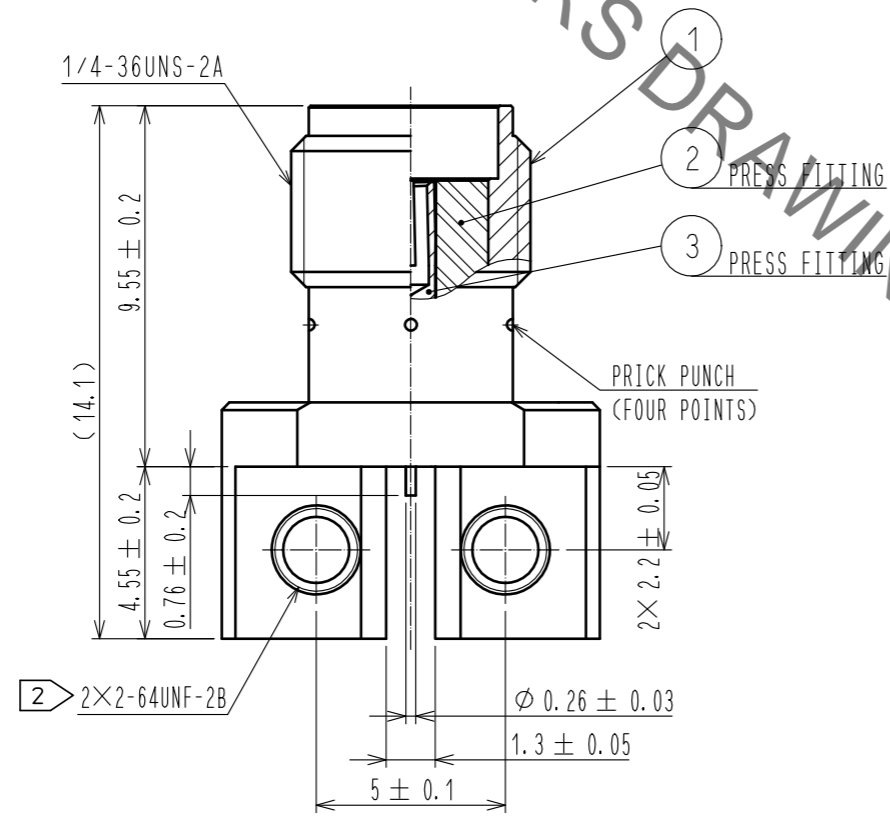
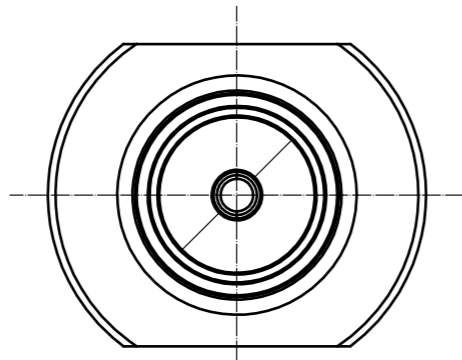


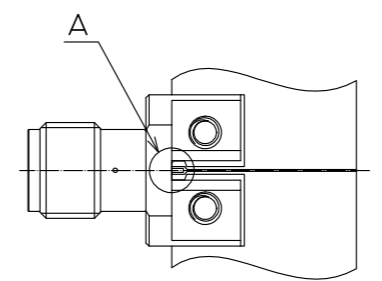
Unified screw thread type



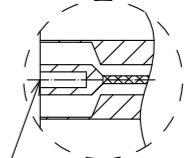
- NOTES
- ① WHEN THE MATING CONNECTOR, PLEASE HOLD MILLING AREA OF 8 ± 0.2 WITH A WRENCH.
 - ② 2-64UNF-2B SCREW TIGHTENING TORQUE IS $0.23 \text{ N} \cdot \text{m}$. PLEASE TIGHTEN THE SCREWS EVENLY WHEN MOUNTING THE CONNECTORS TO ENSURE STABLE ELECTRICAL CONTACT.
 - ③ PLEASE USE A PCB MOUNTING SCREW OF THE LENGTH OF $L(\text{mm})$. THE LENGTH OF $L(\text{mm})$ IS PCB THICKNESS $t_1(\text{mm})$ + SPRING WASHER THICKNESS $t_2(\text{mm})$ + $2(\text{mm})$. PLEASE USE A SCREW WITH SPRING WASHER.
 - ④ THIS CONNECTOR SHOULD BE USE FOR TEST PORT ONLY.

MOUNTING OF CONNECTOR

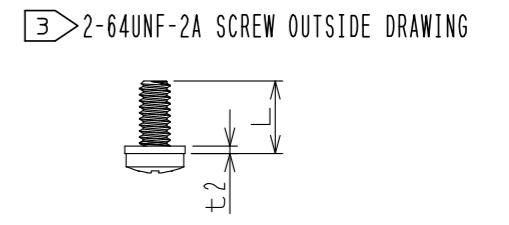
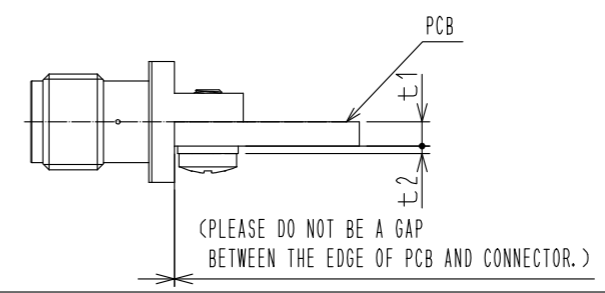
- (1) WHEN THE CONNECTOR IS MOUNTED ON PCB, PLEASE DO NOT BE A GAP BETWEEN THE EDGE OF PCB AND CONNECTOR.
- (2) PLEASE MOUNT THE CONNECTOR AS LOCATED IN THE MIDDLE OF THE SIGNAL PAD OF PCB.
- (3) SOLDERING CONDITIONS:
FOR THE MANUAL SOLDERING, SOLDERING IRON BIT TEMPERATURE IS 380°C MAX. FOR 5 SECONDS MAX.



A(10:1)

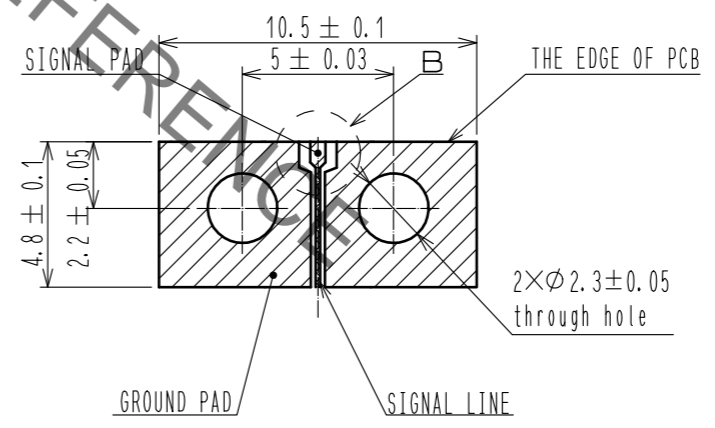


(PLEASE MOUNT THE CONNECTOR AS LOCATED IN THE MIDDLE OF THE SIGNAL PAD OF PCB.)

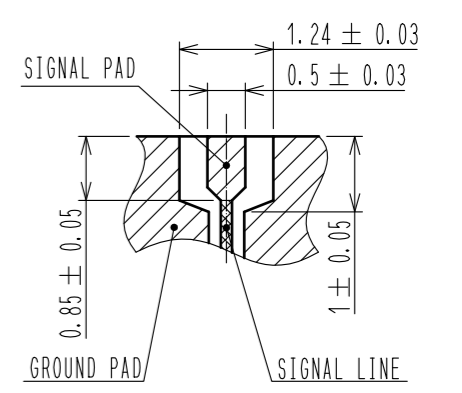


③ 2-64UNF-2A SCREW OUTSIDE DRAWING

RECOMMENDED PC BOARD PATTERN DRAWING(4:1)



B(10:1)



PLEASE DESIGN THE SIGNAL PAD AND SIGNAL LINE WITH 50Ω .
REGIST FOR SIGNAL PAD AND GROUND PAD IS PROHIBITED.

RoHS COMPLIANT

2	PTFE						
1	BRASS	GOLD PLATING		3	BERYLLIUM COPPER	GOLD PLATING	
NO.	MATERIAL	FINISH	REMARKS	NO.	MATERIAL	FINISH	REMARKS
UNITS	mm	SCALE	5:1	COUNT	2	DESCRIPTION OF REVISIONS	DESIGNED
						DIS-D-00003461	RO. YOKOYAMA
							CHECKED
							TO. KATAYAMA
							DATE
							18.08.31
APPROVED		: MH. YAMANE		12.02.08		DRAWING NO.	
CHECKED		: MH. TSUCHIDA		12.02.08		EDC3-342452-00	
DESIGNED		: RO. YOKOYAMA		12.02.03		PART NO.	
DRAWN		: RO. YOKOYAMA		12.02.03		HRMCG-300-467B-1	
						CODE NO.	
						CL323-0937-0-00	



② 1/1

Jan.1.2022 Copyright 2022 HIROSE ELECTRIC CO., LTD. All Rights Reserved. In case of consideration for using Automotive equipment / device which demand high reliability, kindly contact our sales window correspondents.