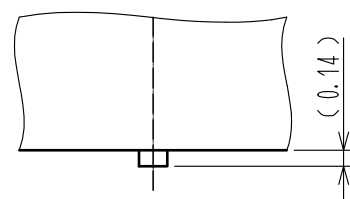
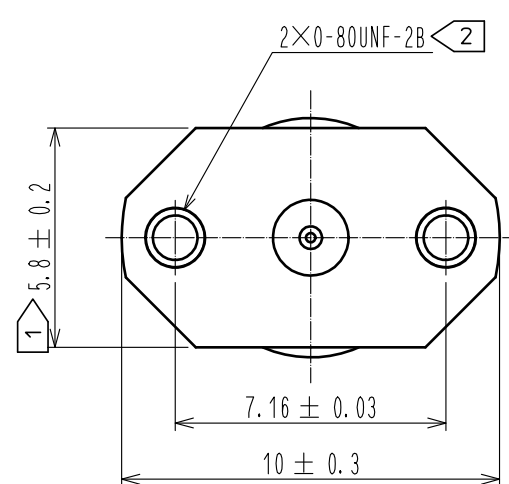
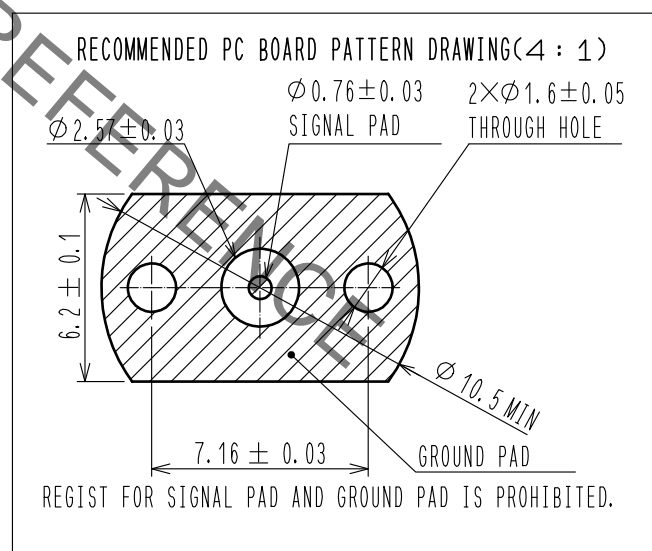
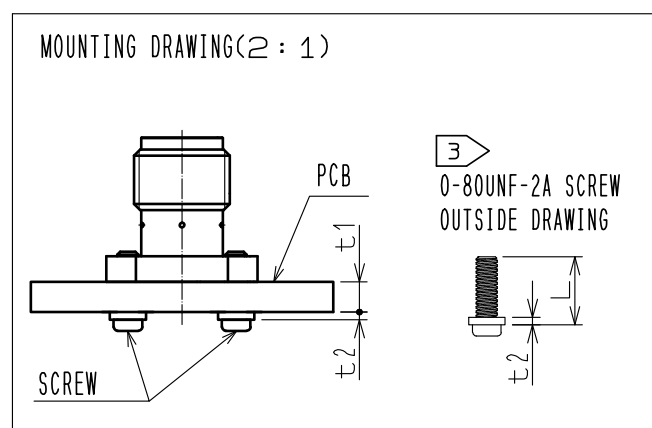
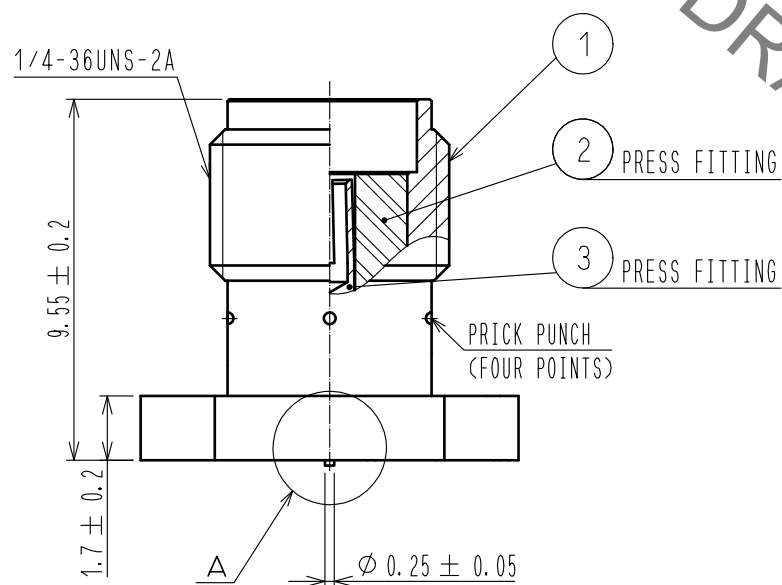
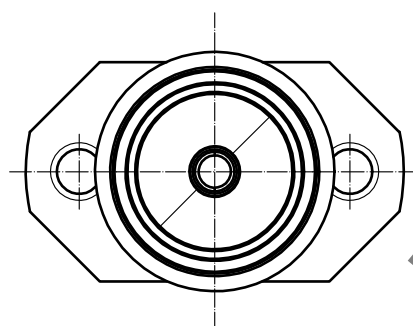


Unified screw thread type

A(10:1)



- NOTES
- 1 WHEN THE MATING CONNECTOR, PLEASE HOLD MILLING AREA OF  $5.8 \pm 0.2$  WITH A WRENCH.
  - 2 0-80UNF-2B SCREW TIGHTENING TORQUE IS  $0.09N \cdot m$ . PLEASE TIGHTEN THE SCREWS EVENLY WHEN MOUNTING THE CONNECTORS TO ENSURE STABLE ELECTRICAL CONTACT.
  - 3 PLEASE USE A PCB MOUNTING SCREW OF THE LENGTH OF  $L(mm)$ . THE LENGTH OF  $L(mm)$  IS PCB THICKNESS  $t1(mm)$  + SPRING WASHER THICKNESS  $t2(mm)$  +  $2(mm)$ . PLEASE USE A SCREW WITH SPRING WASHER.
  - 4. THIS CONNECTOR SHOULD BE USE FOR TEST PORT ONLY.



RoHS COMPLIANT

2	PTFE						
1	BRASS	GOLD PLATING		3	BERYLLIUM COPPER	GOLD PLATING	
NO.	MATERIAL	FINISH .	REMARKS	NO.	MATERIAL	FINISH .	REMARKS
UNITS	mm	SCALE	5 : 1	COUNT	2	DESCRIPTION OF REVISIONS	DESIGNED
						DIS-D-00003461	RO. YOKOYAMA
							CHECKED
							TO. KATAYAMA
							DATE
							18. 08. 31
APPROVED : MH. YAMANE		12. 02. 10		DRAWING NO.		EDC3-339103-00	
CHECKED : MH. TSUCHIDA		12. 02. 10		PART NO.		HRMCG-300-468B-1	
DESIGNED : RO. YOKOYAMA		12. 02. 10		CODE NO.		CL323-0924-8-00	
DRAWN : RO. YOKOYAMA		12. 02. 10					



Jan.1.2022 Copyright 2022 HIROSE ELECTRIC CO., LTD. All Rights Reserved. In case of consideration for using Automotive equipment / device which demand high reliability, kindly contact our sales window correspondents.