

HRM SERIES RF CO-AXIAL CONNECTORS

INFORMATION

The HRM (Hirose Radio Miniature) series are connectors of the SMA (Sub-Miniature Type A) type, prescribed in MIL-C-39012. We developed them in 1967, for the first time in Japan, thanks to our company's outstanding technology. Since then, their high reliability has been recognized, and we have a sales record of more than 6 million thus far.

Uses

The HRM series is suitable for in-unit wiring in wired and wireless communications equipment, broadcasting equipment, radar equipment and electronic measuring instruments, for connections between units, and for input/output terminals of equipment components. They display their effects especially in set designs subject to severe requirements, such as those which operate in a frequency band above the L band and which also have transmission.



Characteristic features

1. Outstanding performance characteristics.

The matters which most require consideration in matching the impedance of coaxial connectors are these: How are we to reduce the discontinuous capacitance caused by dimensional discontinuities on the transmission channel (the differences in level provided for supporting the center contacts or the dielectric materials), and how are we to correct the discontinuous capacitance which does occur? In this respect, the high-frequency performance characteristics of the HRM series are good because there are small differences in level in the transmission channel, and the discontinuous capacitance which does occur because of the differences in level is corrected by a unique technique.

Moreover, the series also has mechanically stable performance characteristics because the center contacts and dielectric materials have secure fastening structure.

2. They are compact in size, lightweight and sturdy.

The receptacle flanges are square in shape, measuring 12.7mm on each side. Their area being about one-half that of the BNC series and about one-fourth that of the S series, they are most suitable for high-density mounting. Moreover, their weights are greatly reduced (a standard receptacle weighs only about 3 grams). Even though they are compact and lightweight, their durability is no lower than that of other types, because they use stainless-steel shells.

3. They have high quality and reliability.

The HRM series is manufactured under a system of thorough quality control from the raw materials to the shipped product. In addition to the highest manufacturing quality, they also have high reliability, and not a single faulty unit has ever occurred at the end-user stage with a service record exceeding 6 million units.

4. There are many varieties.

An extensive expansion of the varieties has been carried out recently, including providing the S type for all varieties and adding airtight connectors and connectors for .085-inch semi-rigid cables. As a result, clients can now select products more freely than was possible before.

HRM SERIES RF CO-AXIAL CONNECTORS

Standard cables

The following are the standard cables of the HRM series:

Flexible cables ——— RG-142B/U, RG-55/U

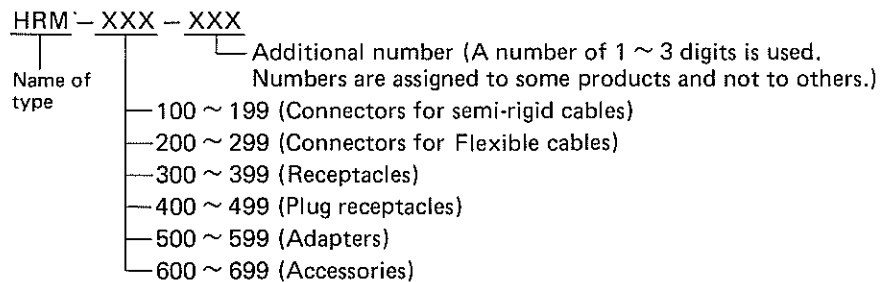
Semi-rigid cables ——— .141-inch semi-rigid cables
 (UT-141, UT-141A, UT-141AA etc.)
 ——— .085-inch semi-rigid cables (UT-85, UT-85C etc.)

The standard cable dimensions are listed on p.110.

Types

1. Classification by function

Functionally, the cables are classified into six types. The following is the configuration of their names.



2. Classification by surface treatment

Products having the same structure, shape and dimensions may have different surface treatments of their armor (shell). There are gold-plated products (gold-plated type) and passivated products (S type).

Those of the S type have the letter S attached at the end of their part number.

Example 1 HRM-301 HRM-301S
 Gold-plated type S type

Example 2 HRM-400-12 HRM-400-12S
 Gold-plated type S type

Technical explanations of the S-type products and of passivation are given on p. 90.

3. Airtight type

Airtight products with hermetic seals are also available.

All airtight products are of the gold-plated type. Air tight types are not available in the S type. Products of the airtight type have the letter H attached at the end of their part number.

Example HRM-300-2H

HRM SERIES RF CO-AXIAL CONNECTORS

Main materials used

| Parts | Materials | | Finish | | |
|-----------------------------|---------------------|----------------------|------------------|----------------|-------------------|
| | Materials | Applicable standards | Type | Plating | Plating thickness |
| Shell | Stainless steel | JIS G 4303 | Gold-plated type | Gold plating | 0.5 ~ 1 micron* |
| | | | S type | Straight type | Passivation |
| | | | | L-bent type | Nickel plating |
| Coupling | Stainless steel | JIS G 4303 | Gold-plated type | Gold plating | 0.5 ~ 1 micron* |
| | | | S type | Passivation | |
| Female contact | Beryllium copper | JIS H 3270 | | Gold plating | 2 ~ 3 micron |
| Male contact | Brass | JIS H 3250 | | Gold plating | 2 ~ 3 microns |
| Solderless sleeve (ferrule) | Annealed copper | JIS H 3250 | | Nickel plating | 3 microns |
| Insulation | Tetrafluoride resin | | | | |
| Rubber packings | Silicone rubber | | | | |
| Cord coverings | Fluoreresin | | | | |

*VA types with a plating thickness of 0.3 micron (min.) are also available.

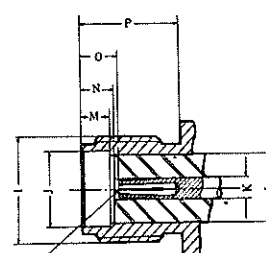
Dimensions of coupling parts

Male coupling parts



| Symbols | Dimension values |
|---------|--|
| A | 1/4-36UNS-2B |
| B | 4.56φ ±0.02 |
| C | 1.27φ ±0.02 |
| D | 0.92φ ^{+0.01} / _{-0.015} |
| E | 2.3 |
| F | 0 ^{+0.15} / ₋₀ |
| G | 60° |
| H | 8 |

Female coupling parts



Insert pin of $0.910\phi^{+0.005}_{-0}$
Grasping force 150 grams or more

| Symbols | Dimension values |
|---------|---|
| I | 1/4-36UNS-2A |
| J | 4.62φ ±0.02 |
| K | 1.27φ ±0.02 |
| L | 4.11φ |
| M | 1.93 ±0.02 |
| N | 1.93 ^{+0.05} / _{-0.1} |
| O | 1.95 ^{+0.38} / ₋₀ |
| P | 5.8 or more |

HRM SERIES RF CO-AXIAL CONNECTORS

Performance characteristics

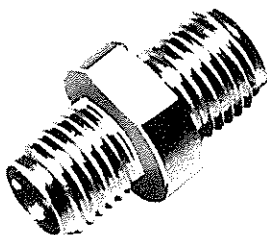
| Item | | Performance characteristics | |
|-------------------------------|--|--|---|
| Structural dimensions | Structure | Refer to individual drawings. | |
| | Dimensions | Refer to P.89 for the coupling part dimensions. Refer to P.91~107 for the external dimensions. | |
| Electrical characteristics | Insulation resistance | 500MΩ or more measured at 500V DC | |
| | Withstand voltage | Test voltage 1000V AC (rms) (at normal pressure) | |
| | Contact resistance | Each 4mΩ or less at center contact and at out contact | |
| | Characteristic impedance | 50Ω | |
| | Frequency range | DC ~ 12.4GHz (Those with a range up to 18GHz are also available. They are marked in the catalog with (18 next to the name.) | |
| | Voltage standing wave ratio (V.S.W.R.) | HRM-100 ~ 199 | <ul style="list-style-type: none"> — Products of the straight type which have no center contacts (Example HRM-101) 1.05 + 0.01f — Products of the straight type which have center contacts (Example HRM-102) 1.05 + 0.015f (Note) — L-bent type 1.10 + 0.02f (Note) <p>Note: These values are limited to cases where .141-inch semi-rigid cables are used.</p> |
| | | HRM-200 ~ 299 | <ul style="list-style-type: none"> — Straight type (Example HRM-202) 1.10 + 0.02f — L-bent type (Example HRM-208) 1.10 + 0.025f |
| | | HRM-300 ~ 399 | <ul style="list-style-type: none"> — Straight type (Example HRM-301) 1.05 + 0.01f — L-bent type (Example HRM-305) 1.05 + 0.025f |
| | | HRM-400 ~ 499 | <ul style="list-style-type: none"> — Straight type (Example HRM-401) 1.05 + 0.01f — L-bent type (Example HRM-405) 1.05 + 0.025f |
| | | HRM-500 ~ 599 | <ul style="list-style-type: none"> — Straight type (Example HRM-513) 1.05 + 0.01f — L-bent type (Example HRM-503) 1.05 + 0.025f — Conversion adapter <ul style="list-style-type: none"> — For type N, type S (Example HRM-506) 1.05 + 0.01f — For type BNC (Example HRM-517) 1.2 or less |
| HRM-600 ~ 699 | | Standard terminal device (HRM-601, 602) 1.05 + 0.015f | |
| Airtight products | | DC to 6GHz, .1.15 or less 6 ~ 12.4GHz, 1.2 or less f = frequency in GHz | |
| Mechanical characteristics | Coupling tightening torque | 0.6~1.0Nm | |
| | Coupling fastening strength | 490N or more | |
| | Center-contact holding power | 1.5N or more | |
| | Center-contact fastening torque | 16.7mN · m or more | |
| | Contact life | Contact resistance of 6 mΩ or less after 1000 insertions and withdrawals | |
| Environmental characteristics | Vibration resistance | *There must be no abnormalities when tested by MIL-STD-202 Method 204, test condition D. | |
| | Impact resistance | *There must be no abnormalities when tested by MIL-STD-202 Method 202 at an acceleration of 200G. | |
| | Temperature-resistance cycles | *There must be no abnormalities when tested by MIL-STD-202 Method 202, test condition C. | |
| | Corrosion resistance | *There must be no abnormalities when tested by MIL-STD-202 Method 101, test condition B. | |
| | Humidity resistance | *There must be no abnormalities when tested by MIL-STD-202 Method 106, test condition C. | |
| | Airtightness | 1 × 10 ⁻⁷ cc/sec or less | |
| | Radiation resistance | There must be no abnormalities when exposed to radiation of 3 × 10 ¹³ neutrons. | |

*The coupling tightening torque is 10 kg-cm.

HRM SERIES RF CO-AXIAL CONNECTORS

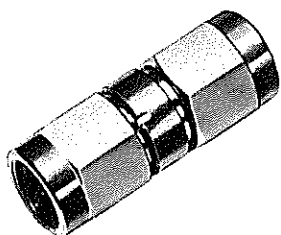
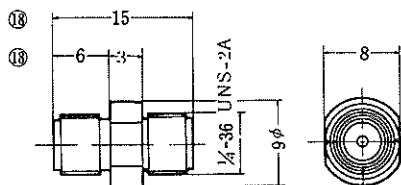
Adapters HRM-500~599

The following are the adapters connecting between the coupling parts of the HRM series:



| HRS No. | Part No. |
|----------------|----------|
| * CL323-0029-0 | HRM-501 |
| CL323-0156-8 | HRM-501S |

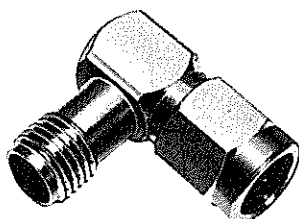
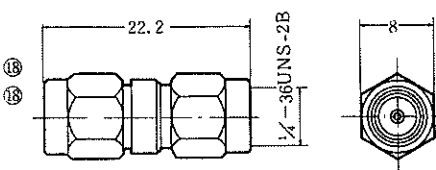
Female-female adapters
Shells are made of stainless steel and are of the integral type.



| HRS No. | Part No. |
|-------------------|----------------|
| * CL323-0030-0-40 | HRM-502(40) |
| CL323-0157-0-40 | HRM-502S(40) |
| CL323-0126-7-40 | HRM-502-1(40) |
| CL323-0123-9-40 | HRM-502-1S(40) |

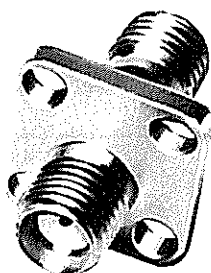
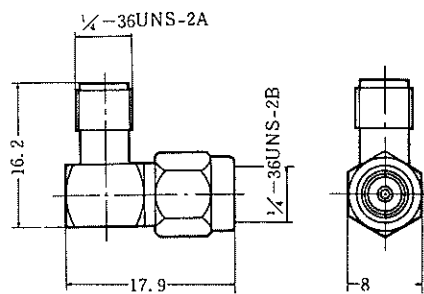
Male-male adapters

* Shells are made of stainless steel and are split into two segments.
** Shells are made of stainless steel and are of the integral type.



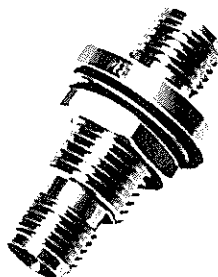
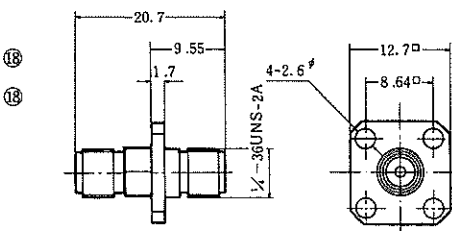
| HRS No. | Part No. |
|-------------------|--------------|
| * CL323-0031-2-40 | HRM-503(40) |
| * CL323-0112-2-40 | HRM-503S(40) |

Male-female L-type adapters



| HRS No. | Part No. |
|-------------------|-------------|
| * CL323-0034-0-09 | HRM-513(09) |
| * CL323-0657-3 | HRM-513SV |

Female-female panel adapters
Shells are made of stainless steel and are of the integral type



| HRS No. | Part No. |
|-----------------|-----------------|
| CL323-0659-9-40 | HRM-500-1SV(40) |

Nut-fastened-type panel adapters

