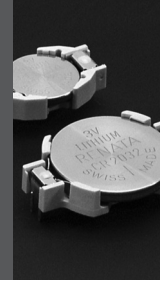


# Battery Holders

## Through-hole mounting



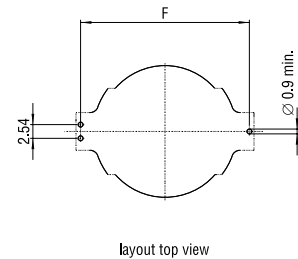
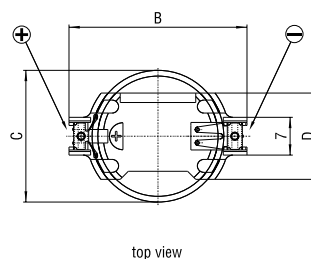
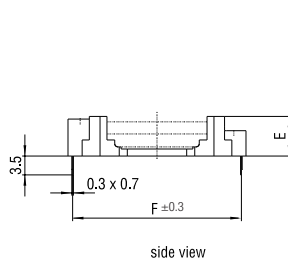
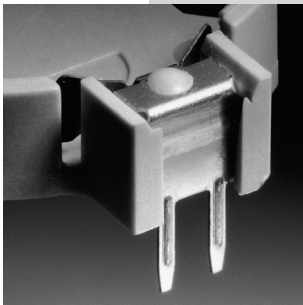
### Horizontal mounting

#### Features

- Easy and fast replacement of the battery
- Designed for automatic pick&place mounting
- Safe retention of coin cell
- Automated battery mounting possible
- Clear separation of connections
- Protection against short-circuits
- Protection against inverse polarity (polarized)
- Protection against leak currents
- Robust design
- Suitable for wave-soldering

#### Specifications

- Holder material: heat-resistant, glass fibre filled LCP
- Flammability rating UL 94 V-0
- Battery contacts: spring stainless steel AISI 301, nickel-plated throughout. Solder area tin-plated throughout, min. thickness 5  $\mu\text{m}$ .
- Contact resistance between contacts and the cell is less than 100  $\text{m}\Omega$  (measured through AC 1kHz; depending on the case material of the cell).
- UL recognition, file E218732
- Operating temperature range:  $-40/+100^{\circ}\text{C}$



### Dimensions

| Model      | For use with Renata cell | Dimensions (mm) |      |      |      |       | Weight (g) | Part.No.* |
|------------|--------------------------|-----------------|------|------|------|-------|------------|-----------|
|            |                          | B               | C    | D    | E    | F     |            |           |
| HU357-LF   | 357 (SR44W)              | 19.9            | 11.6 | 12.0 | 7.4  | 18.65 | 0.84       | 701133    |
| HU1225-LF  | CR1225                   | 20.3            | 12.5 | 12.7 | 4.5  | 19.1  | 0.70       | 701105    |
| HU1632-LF  | CR1632                   | 24.3            | 16.0 | 14.5 | 5.2  | 23.0  | 0.80       | 701131    |
| HU2032-LF  | CR2032                   | 28.5            | 20.0 | 16.1 | 5.2  | 27.2  | 0.95       | 701106    |
| HU2430-LF  | CR2430                   | 33.0            | 24.5 | 16.1 | 4.7  | 31.7  | 1.05       | 701107    |
| HU2450N-LF | CR2450N <sup>1)</sup>    | 33.0            | 24.5 | 16.1 | 7.3  | 31.75 | 1.45       | 701108    |
| HU2477N-LF | CR2477N                  | 33.0            | 24.5 | 16.1 | 10.1 | 31.8  | 1.65       | 701109    |

\*Packaging: Industrial Bulk (IB-Trays)

1) Not suitable for CR2450HT