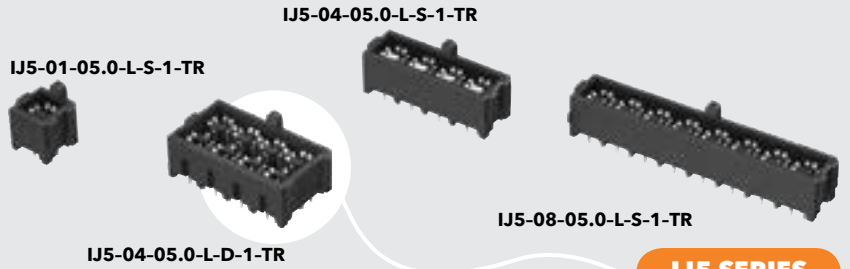


(4.00 mm) .1575"



**IJ5 SERIES**

# 50 Ω HIGH ISOLATION RF JACKS

## SPECIFICATIONS

For complete specifications and recommended PCB layouts see [www.samtec.com?IJ5](http://www.samtec.com?IJ5)

**Shell Material:**

Copper Alloy

**Insulator Material:**

Black LCP

**Contact Material:**

Copper Alloy

**Dielectric Material:**

Black LCP

**Plating:**

Au or Sn over

50 μ" (1.27 μm) Ni

**Current Rating (Vertical):**

Signals: 2.36 A per pin

(2 adjacent pins powered)

Grounds: 4.4 A per pin

(2 adjacent pins powered)

**Operating Temp Range:**

-55 °C to +125 °C

**Dielectric**

**Withstanding Voltage:**

600 VAC

**Working Voltage:**

200 VAC

**RoHS Compliant:**

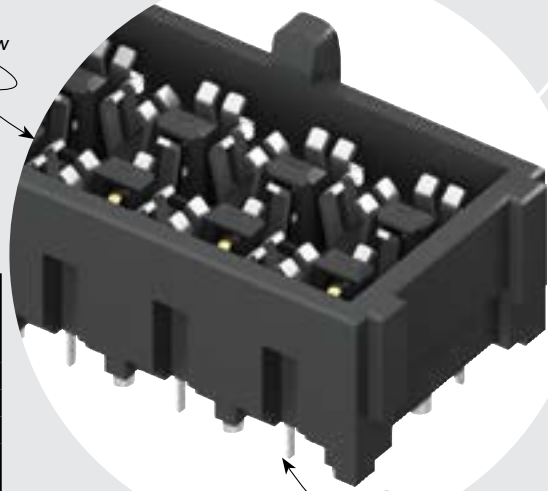
Yes

**Mates with:**  
IP5

IP5/IJ5 10 mm Stack Height	Frequency
Insertion Loss = 3 dB	10.5 GHz / 21.0 Gbps
Return Loss = 15 dB	5.5 GHz / 11.0 Gbps
Isolation = 60 dB	8.8 GHz / 17.6 Gbps
Isolation = 70 dB	7.6 GHz / 15.2 Gbps
Isolation = 80 dB	1.3 GHz / 2.6 Gbps

Complete test data available at [www.samtec.com?IJ5](http://www.samtec.com?IJ5) or contact [sig@samtec.com](mailto:sig@samtec.com)

Single or  
Double Row



1, 2, 4, 6 or 8  
Positions

## PROCESSING

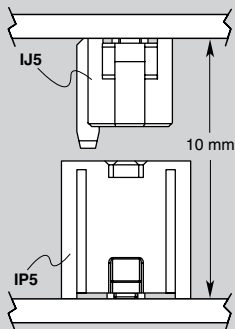
**Lead-Free Solderable:**  
Yes

## RECOGNITIONS

For complete scope of recognitions see [www.samtec.com/quality](http://www.samtec.com/quality)



## APPLICATION



## OTHER SOLUTIONS

- Cable assembly (see IJ5C Series)

<b>IJ5</b>	<b>JACKS PER ROW</b>	<b>05.0</b>	<b>PLATING</b>	<b>ROW OPTION</b>	<b>TAIL</b>	<b>"X"R</b>
	<b>-01, -02, -04, -06, -08</b>		<b>-L</b> = 10 μ" (0.25 μm) Gold on contact area, Matte Tin on tail	<b>-S</b> = Single Row <b>-D</b> = Double Row (Not available with -01)	<b>-1</b> = (1.60 mm) .062" board thickness	<b>-TR</b> = Tape & Reel <b>-FR</b> = Full Reel Tape & Reel (must order max. quantity per reel; Contact Samtec for quantity breaks)

NO. OF JACKS	A
-01	(5.55) .219
-02	(9.55) .376
-04	(17.55) .691
-06	(25.55) 1.006
-08	(33.55) 1.321

