

Solder Cup Cable Connectors

The PowerAmp connector family is a 1- and 2-row high reliability connector solution with a pitch of 5.72 millimeters (0.225"). Available with 5 to 20 contacts and rated up to 23A per contact make it ideal for robust power connections. The connectors can also be customized to address unique design requirements.

- Current rating up to 23A per contact
- High vibration and shock resistant
- Withstands extreme temperatures of -65°C to +125°C
- Accepts wire sizes up to AWG 12 (4 mm²)
- UL94V-0 flammability rated insulator
- UL Approved, UL 1977 ECBT2.E466640



Part Number Builder

iP	Rows	Body Style	Mounting Ears	Size	Termination	Hardware Style
Series	1 2	P Plug R Receptacle	0 Without	05 10 20	PSC Pin: Vertical Solder Cup SSC Socket: Vertical Solder Cup	J Fixed Jacket JTB Turning Jacket QTT-1 Quarter Turn (Turning) QTF-1 Quarter-Turn (Fixed)

Technical Information

Material Specifications

Insulator Material:
Glass-filled PPS (polyphenylene sulfide)
Insulator Color: White
Material (Contacts): Pins: copper alloy
Sockets: beryllium copper
Terminal Material: Copper alloy
Plating (Contacts):
Minimum 15 µin Au over 30 µin Ni
Hardware: Stainless steel
UL File: SE466640

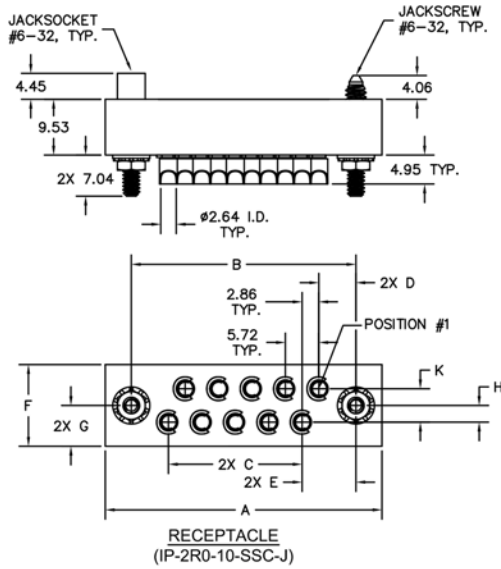
Electromechanical Performance

Rated Current: 23A per contact
Durability: ≥ 250 mating cycles
Test Voltage: 2,000 V AC for 1 minute
Insulation Resistance: 5 GΩ min.
Contact Resistance: 1 mΩ max.
Insertion Force (Max): 4 oz. (4.45N) per contact
Withdrawal Force (Min.):
0.5 oz. (0.14N) per contact

Environmental Specifications

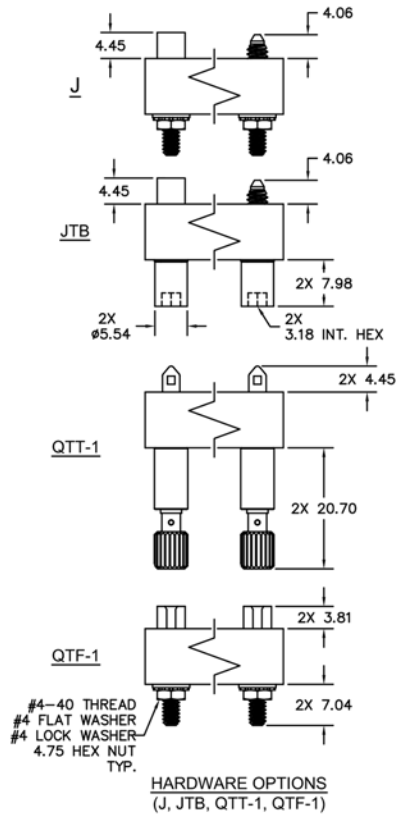
Operating Temperature: -65° to +125°C
Vibration: 10Hz to 2,000Hz, 1.52mm, 147.1m/s² (15G), duration 12h
RoHS: Compliant

iSeries
BASED ON MIL-SPEC. BUILT FOR INDUSTRIAL.

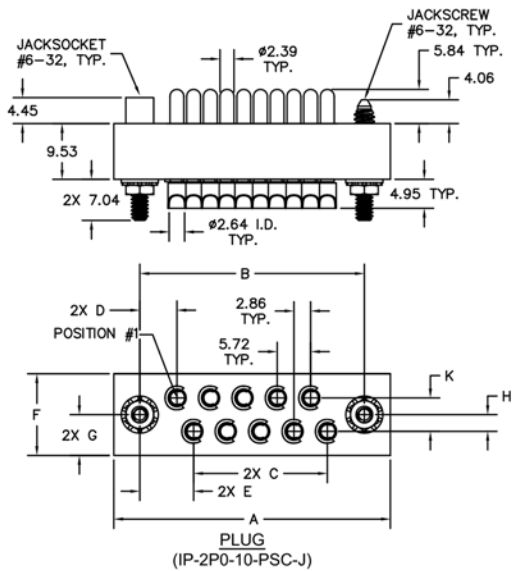


NOTES:
 SIZE 5 - SINGLE ROW
 SIZE 10 - 2-ROW STAGGERED GRID
 SIZE 20 - 2-ROW SQUARE GRID

		DIMENSIONS								
SIZE	A	B	C	D	E	F	G	H	K	
5	44.45	35.56	22.86	6.35	N/A	9.53	4.78	N/A	N/A	
10	47.29	38.40	22.86	6.35	9.22	13.97	6.99	2.86	5.72	
20	73.03	64.14	51.44	6.35	6.35	13.97	6.99	2.86	5.72	

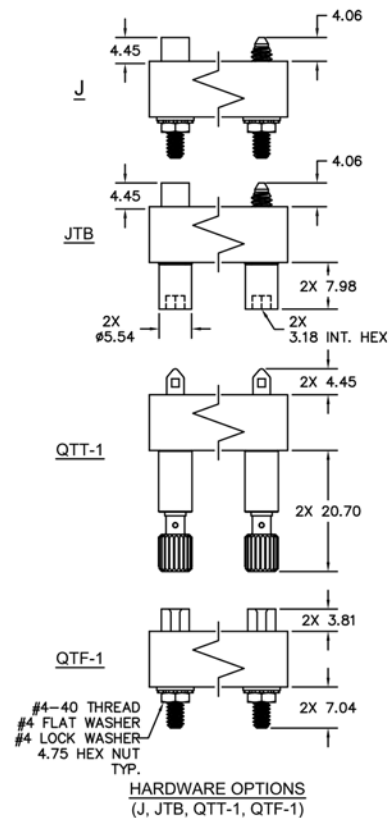


HARDWARE OPTIONS
 (J, JTB, QTT-1, QTF-1)



NOTES:
 SIZE 5 - SINGLE ROW
 SIZE 10 - 2-ROW STAGGERED GRID
 SIZE 20 - 2-ROW SQUARE GRID

		DIMENSIONS								
SIZE	A	B	C	D	E	F	G	H	K	
5	44.45	35.56	22.86	6.35	N/A	9.53	4.78	N/A	N/A	
10	47.29	38.40	22.86	6.35	9.22	13.97	6.99	2.87	5.72	
20	73.03	64.14	51.44	6.35	6.35	13.97	6.99	2.87	5.72	



HARDWARE OPTIONS
 (J, JTB, QTT-1, QTF-1)

All dimensions
 in millimeters.