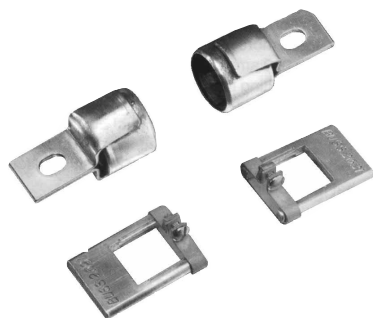


Class H, J, K, & R Fuse Reducers

REDUCERS



CATALOG SYMBOL: CLASS H, J, K, & R
 FUSE REDUCERS
 U.L. LISTED
 (GUIDE # IZZR, FILE #E12853)
 CSA CERTIFIED
 (CLASS 6225-01, FILE #47235)

Fuse Reducers for Class J Dimension Fuses- LPJ, JKS.

| Fuse Size | Desired Size | Catalog No. (Pair) Reducer No. | *Carton Weight (Lbs.) |
|-----------|--------------|--------------------------------|-----------------------|
| 30A | 60A | J-63 | 0.38 |
| 30A | 60A | J-13 | 1.73 |
| 60A | 100A | J-16 | 1.85 |
| 60A | 200A | J-26 | 2.55 |
| 100A | †200A | J-21 | 1.36 |
| 100A | †400A | J-41 | 4.90 |
| 200A | †400A | J-42 | 2.75 |
| 200A | 600A | J-62 | 1.80 |
| 400A | †600A | J-64 | 3.55 |

* Carton quantity — 10 pair. † Not for Bolt-on Applications.

Fuse Reducers for Class R Dimension Fuses FRN-R, LPN-RK — FRS-R, LPS-RK.

| Fuse Size | Desired Size | Catalog No. (Pairs) | |
|-----------|--------------|---------------------|-----------|
| | | 250V | 600V |
| 30A | 60A | No. 263-R | No. 663-R |
| 30A | 100A | No. 213-R | No. 216-R |
| 60A | | No. 216-R | No. 616-R |
| 60A | 200A | No. 226-R | No. 626-R |
| 100A | | No. 2621-R | |
| 100A | 400A | No. 2641-R | |
| 200A | | No. 242-R | No. 642-R |
| 100A | 600A | No. 2661-R | |
| 200A | | No. 2662-R | |
| 400A | | **No. 2664-R | |

**Single reducer only (pair not required)

Note: Carton quantity - 10 pair.

- Fuse reducers install in fuse clips designed to permit the installation of smaller size fuses than those for which the clips are introduced.
- Reducers will fit into any panel or switch including the dead-front type.
- Strong contact is maintained both mechanically and electrically.
- U.L. listed.
- There are no reducers to go from 250V to 600V.
- There are no reducers for switching from one Class to another.
- There are no reducers for Class T or Class L fuses.

Fuse Reducers for Class H & K Dimension Fuses NON, REN — NOS, RES

| Fuse Size | Desired Size | Catalog No. (Pairs) | | 600V Reducer No. | *Carton Weight (Lbs.) |
|-----------|--------------|---------------------|-----------------------|------------------|-----------------------|
| | | 250V Reducer No. | *Carton Weight (Lbs.) | | |
| 30A | 60A | No. 263 | 0.38 | No. 663 | 1.00 |
| 30A | 100A | No. 213 | 1.73 | No. 216 | 1.73 |
| 60A | 100A | No. 216 | 1.73 | No. 616 | 1.85 |
| 60A | 200A | No. 226 | 3.00 | No. 626 | 3.33 |
| 100A | 200A | No. 2621 | 1.63 | No. 2621 | 1.63 |
| 100A | 400A | No. 2641 | 4.90 | No. 2641 | 4.90 |
| 200A | 400A | No. 2642 | 3.50 | No. 2642 | 3.50 |
| 100A | 600A | No. 2661 | 8.70 | No. 2661 | 8.70 |
| 200A | 600A | No. 2662 | 6.85 | No. 2662 | 6.85 |
| 400A | 600A | No. 2664 | 4.45 | No. 2664 | 4.45 |

* Carton quantity — 10 pair.

The only controlled copy of this BIF document is the electronic read-only version located on the Bussmann Network Drive. All other copies of this BIF document are by definition uncontrolled. This bulletin is intended to clearly present comprehensive product data and provide technical information that will help the end user with design applications. Bussmann reserves the right, without notice, to change design or construction of any products and to discontinue or limit distribution of any products. Bussmann also reserves the right to change or update, without notice, any technical information contained in this bulletin. Once a product has been selected, it should be tested by the user in all possible applications.